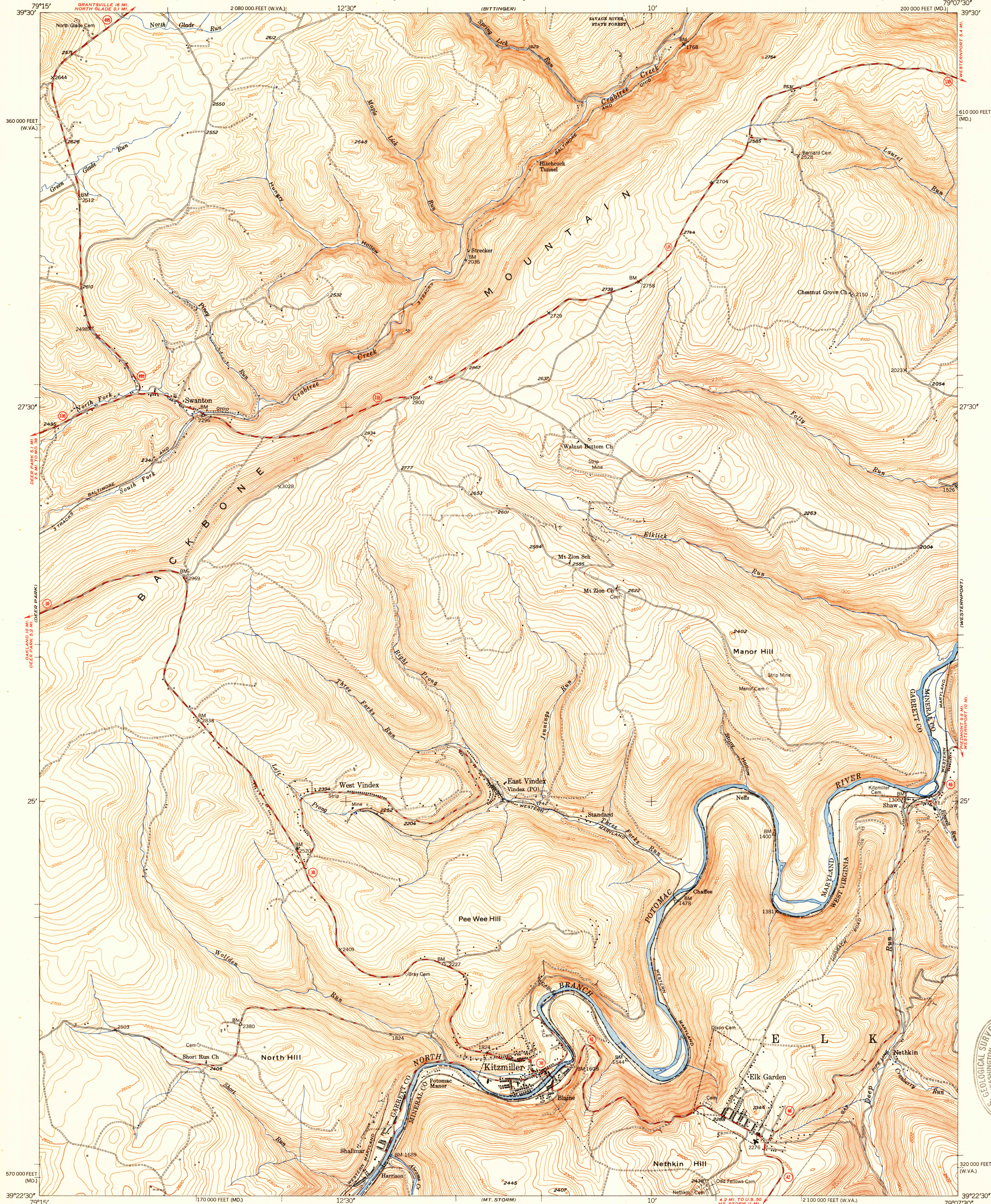


UNITED STATES  
DEPARTMENT OF THE INTERIOR  
GEOLOGICAL SURVEY

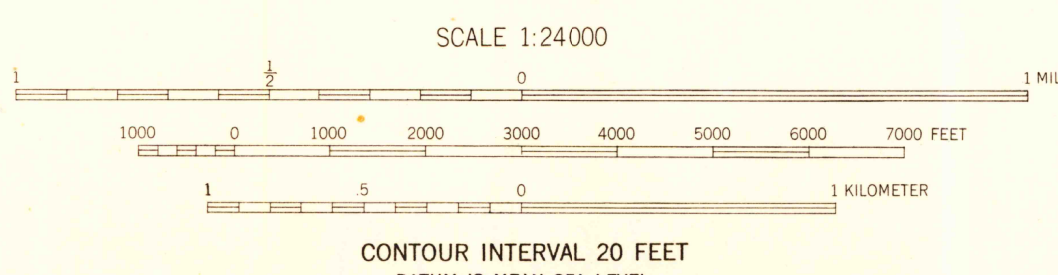
STATE OF MARYLAND  
DEPARTMENT OF GEOLOGY, MINES, AND WATER RESOURCES  
JOSEPH T. SINGEWALD, JR., DIRECTOR

KITZMILLER QUADRANGLE  
MARYLAND-WEST VIRGINIA  
7.5 MINUTE SERIES (TOPOGRAPHIC)  
NW/4 ELK GARDEN 15' QUADRANGLE



Mapped, edited, and published by the Geological Survey  
Control by USGS and USC&GS  
Topography from aerial photographs by multiplex methods  
Aerial photographs taken 1946. Field check 1948  
Polyconic projection. 1927 North American datum  
10,000-foot grids based on Maryland coordinate system, and  
West Virginia coordinate system, north zone  
Extent of state forest areas uncertain

TRUE NORTH  
MAGNETIC NORTH  
APPROXIMATE MEAN  
DECLINATION, 1948



THIS MAP COMPLIES WITH NATIONAL MAP ACCURACY STANDARDS  
FOR SALE BY U. S. GEOLOGICAL SURVEY, WASHINGTON 25, D. C.

ROAD CLASSIFICATION  
HARD-SURFACE ALL WEATHER ROADS DRY WEATHER ROADS  
Heavy-duty ——— **LANE LANE** Improved dirt ———  
Medium-duty ——— **LANE LANE** Unimproved dirt ———  
Loose-surface, graded, or narrow hard-surface. - - - - -  
U. S. Route State Route

KITZMILLER, MD. - W. VA.  
NW/4 ELK GARDEN 15' QUADRANGLE  
N3922.5-W7907.5/7.5

EDITION OF 1950

