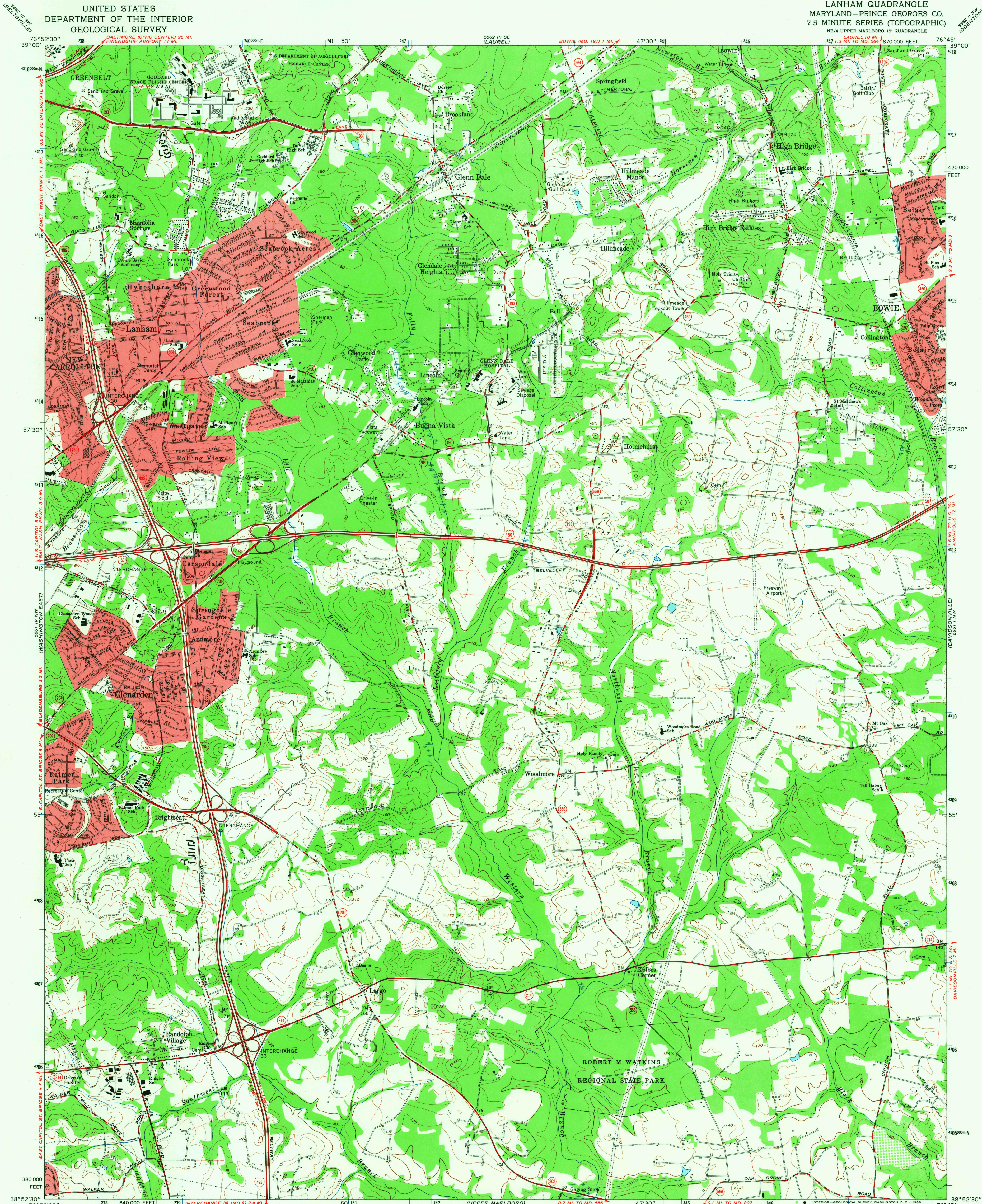


UNITED STATES
DEPARTMENT OF THE INTERIOR
GEOLOGICAL SURVEY

LANHAM QUADRANGLE
MARYLAND-PRINCE GEORGES CO.
7.5 MINUTE SERIES (TOPOGRAPHIC)
NE/4 UPPER MARLBORO 15' QUADRANGLE
LAUREL 10 MI.
BOWIE (MD. 1971) 1 MI.



Map by the Army Map Service
Edited and published by the Geological Survey

Control by USGS and USC&GS

Planimetry by photogrammetric methods from aerial photographs
taken 1938 and 1943. Topography by planetable surveys 1944
Revised by the Geological Survey 1965

Polyconic projection. 1927 North American datum
10,000-foot grid based on Maryland coordinate system
1000-meter Universal Transverse Mercator grid ticks, zone 18,
shown in blue

Fine red dashed lines indicate selected fence and field lines where
generally visible on aerial photographs. This information is unchecked
Red tint indicates areas in which only landmark buildings are shown

UTM GRID AND 1965 MAGNETIC NORTH
DECLINATION AT CENTER OF SHEET

SCALE 1:24,000
CONTOUR INTERVAL 20 FEET
DATUM IS MEAN SEA LEVEL

THIS MAP COMPLIES WITH NATIONAL MAP ACCURACY STANDARDS
FOR SALE BY U.S. GEOLOGICAL SURVEY, WASHINGTON, D.C. 20242
A FOLDER DESCRIBING TOPOGRAPHIC MAPS AND SYMBOLS IS AVAILABLE ON REQUEST

USGS
Historical File
Topographic Division



ROAD CLASSIFICATION
Heavy-duty ——— Light-duty ———
Medium-duty ——— Unimproved dirt ———
Interstate Route U.S. Route State Route

U.S.G.S. LANHAM, MD.
NE/4 UPPER MARLBORO 15' QUADRANGLE
N3852.5—W7645.7.5

1965

AMS 5661 IV NE-SERIES V833

NOV 2 1965