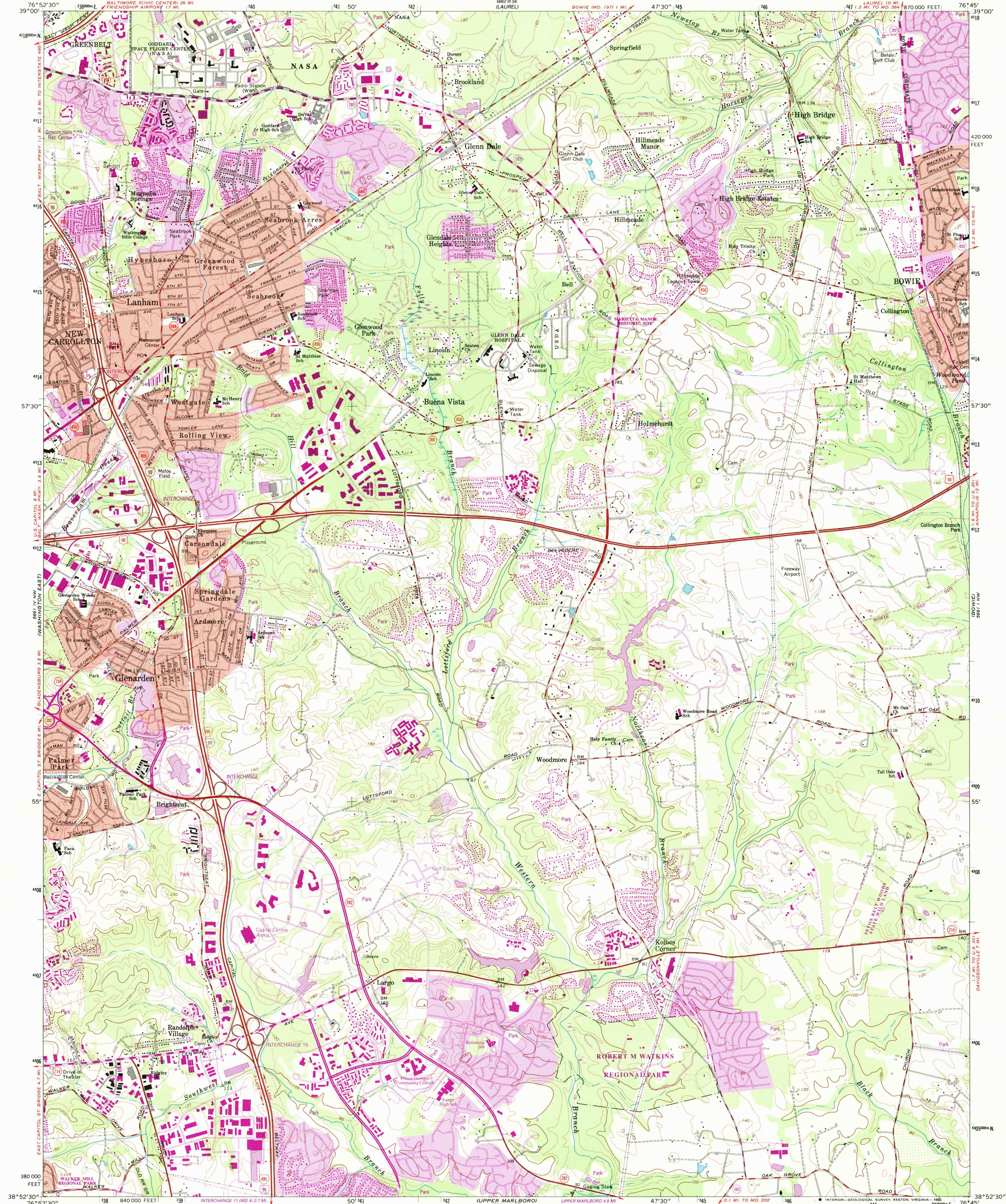
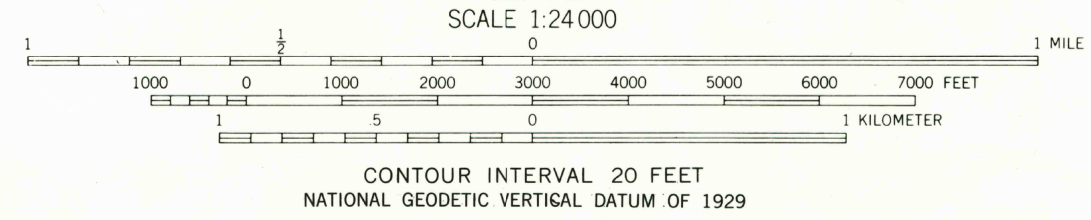
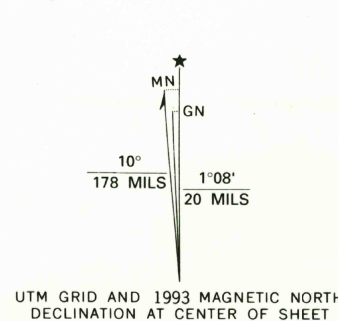


UNITED STATES  
DEPARTMENT OF THE INTERIOR  
GEOLOGICAL SURVEY

LANHAM QUADRANGLE  
MARYLAND—PRINCE GEORGES CO.  
7.5 MINUTE SERIES (TOPOGRAPHIC)



Map by the Army Map Service  
Revised by the United States Geological Survey  
Control by USGS and NOS/NOAA  
Planimetry by photogrammetric methods from aerial photographs  
taken 1938 and 1943. Topography by planimetric surveys 1944  
Revised 1977  
Projection and 10,000-foot grid ticks: Maryland coordinate  
system, (Lambert conformal conic)  
1000-meter Universal Transverse Mercator grid ticks, zone 18, shown in blue  
1927 North American Datum (NAD 27)  
North American Datum of 1983 (NAD 83) is shown by dashed corner ticks  
The values of the shift between NAD 27 and NAD 83 for 7.5-minute  
intersections are given in USGS Bulletin 1875  
There may be private holdings within the boundaries of  
the National or State reservations shown on this map  
Red tint indicates areas in which only landmark buildings are shown  
Fine red dashed lines indicate selected fence and field lines where  
generally visible on aerial photographs. This information is unchecked



COMPLIES WITH U.S. GEOLOGICAL SURVEY STANDARDS FOR SPATIAL ACCURACY—CLASS 2  
FOR SALE BY U.S. GEOLOGICAL SURVEY, DENVER, COLORADO 80225, OR RESTON, VIRGINIA 22092  
A FOLDER DESCRIBING TOPOGRAPHIC MAPS AND SYMBOLS IS AVAILABLE ON REQUEST

ROAD CLASSIFICATION  
Primary highway, hard surface  
Secondary highway, hard surface  
Unimproved road  
Light-duty road, hard or improved surface  
Interstate Route  
U. S. Route  
State Route

QUADRANGLE LOCATION  
MARYLAND

LANHAM, MD.  
38076-H7-TF-024  
1965  
REVISED 1993  
DMA 5661 IV NE-SERIES V833

USGS AND HISTORICAL  
PAP ARCHIVES  
AUG 10 1994  
REC'D FILE COPY