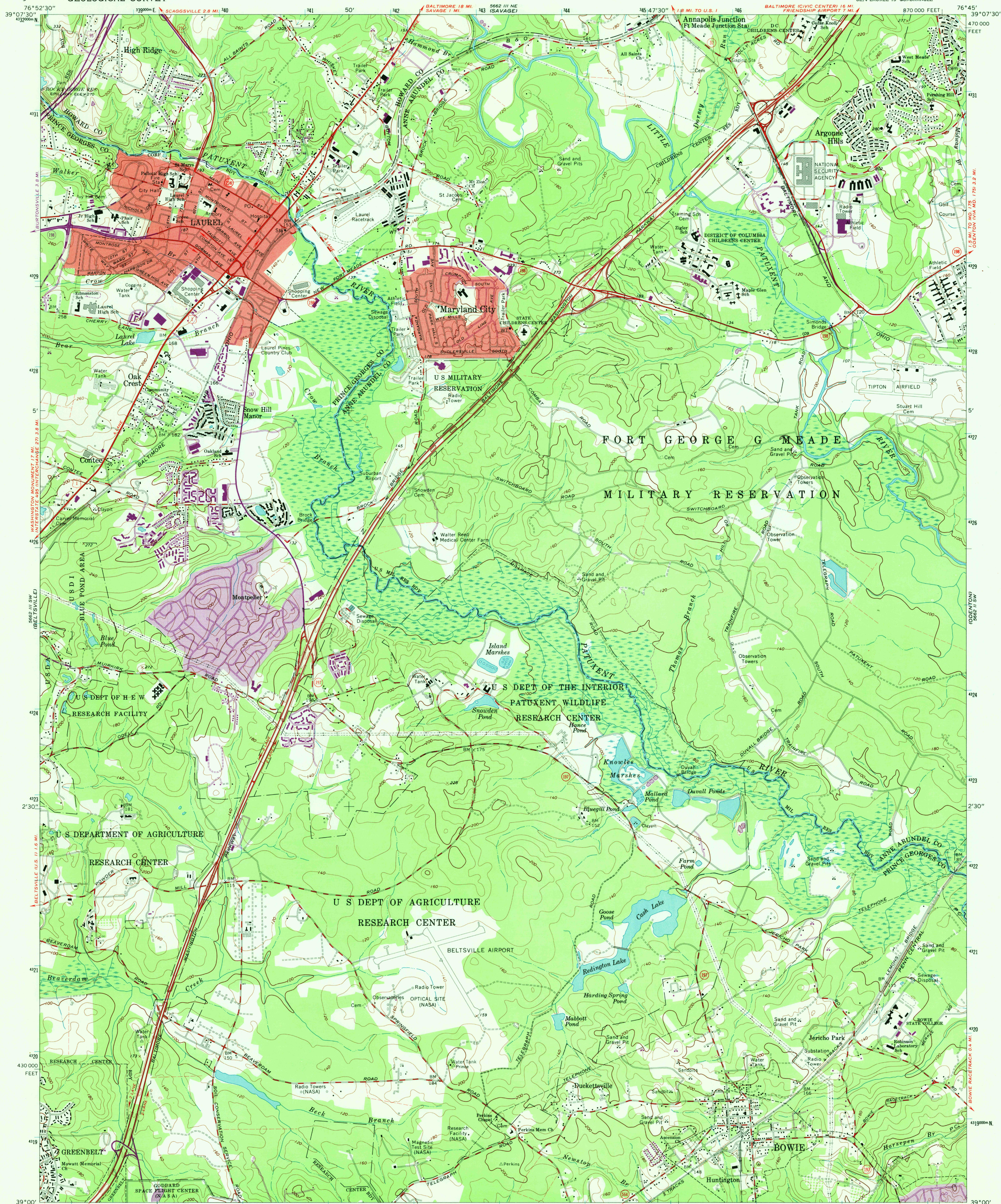
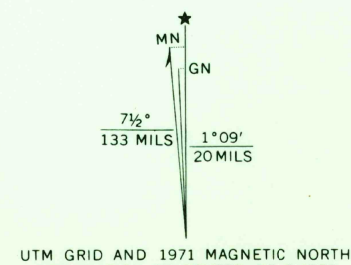


UNITED STATES
DEPARTMENT OF THE INTERIOR
GEOLOGICAL SURVEY

LAUREL QUADRANGLE
MARYLAND
7.5 MINUTE SERIES (TOPOGRAPHIC)
SE/4 LAUREL 15' QUADRANGLE



Mapped by the Army Map Service
Edited and published by the Geological Survey
Control by USGS, USC&GS, USCE, USSCS, and WSSC
Topography by photogrammetric methods and by planetable
surveys 1943. Revised by the Geological Survey 1965
Polyconic projection. 1927 North American datum
10,000-foot grid based on Maryland coordinates system
1000-meter Universal Transverse Mercator grid ticks,
zone 18, shown in blue
Fine red dashed lines indicate selected fence and field lines where
generally visible on aerial photographs. This information is unchecked
Red tint indicates areas in which only landmark buildings are shown
Revisions shown in purple compiled by the Geological Survey from
aerial photographs taken 1971. This information not field checked
Purple tint indicates extension of urban areas



SCALE 1:24,000
CONTOUR INTERVAL 20 FEET
DATUM IS MEAN SEA LEVEL
THIS MAP COMPLIES WITH NATIONAL MAP ACCURACY STANDARDS
FOR SALE BY U.S. GEOLOGICAL SURVEY, WASHINGTON, D. C. 20242
A FOLDER DESCRIBING TOPOGRAPHIC MAPS AND SYMBOLS IS AVAILABLE ON REQUEST



ROAD CLASSIFICATION
Heavy-duty ——— Light-duty ———
Medium-duty ——— Unimproved dirt ———
U.S. Route ——— State Route ———
Interstate Route ———

LAUREL, MD.
SE/4 LAUREL 15' QUADRANGLE
N3900—W7645/7.5
1965
PHOTOREVISED 1971
AMS 5662 III SE—SERIES V833

MAR 24 1972
9990
USGS
HISTORICAL FILE
TOPOGRAPHIC DIVISION