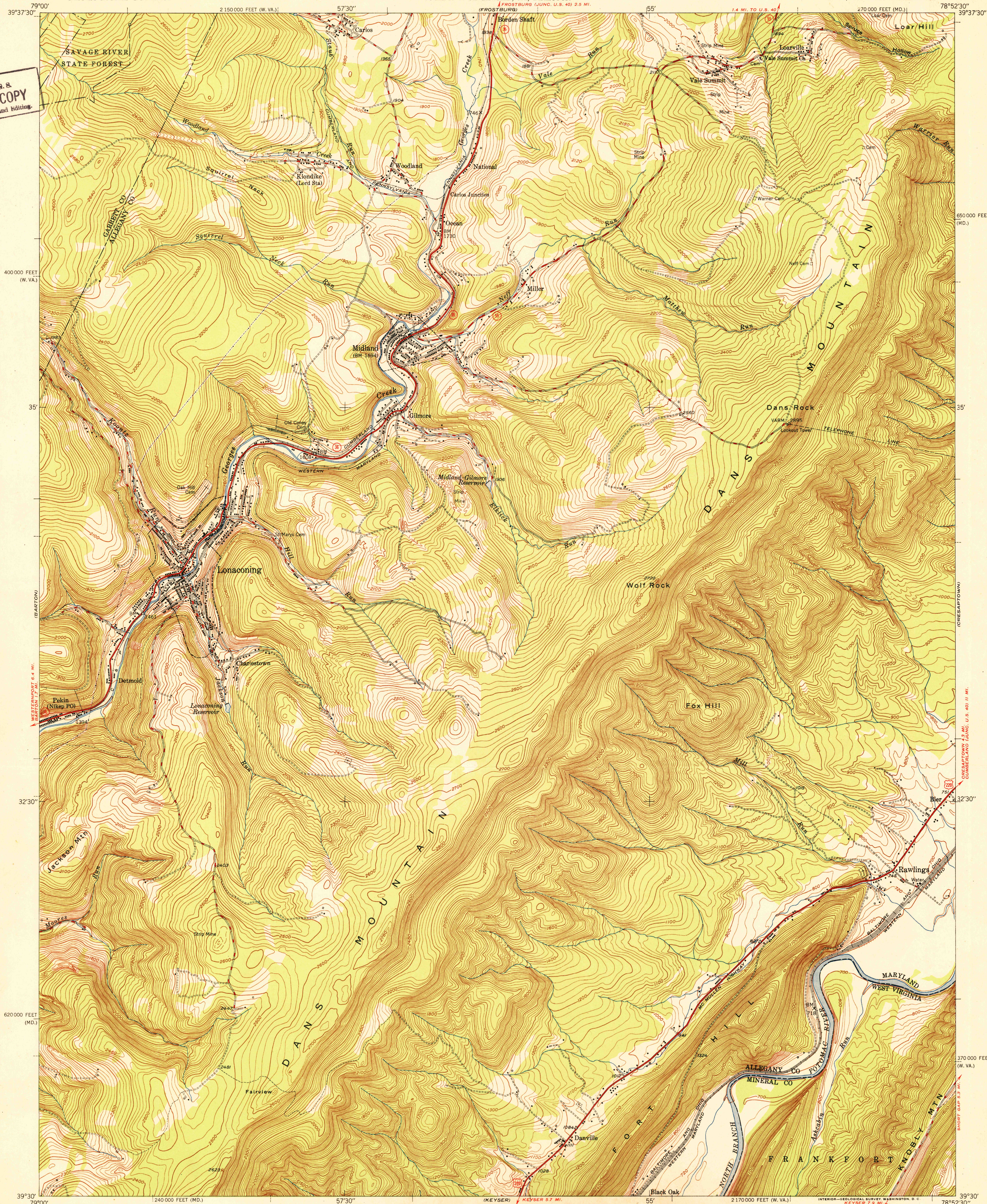
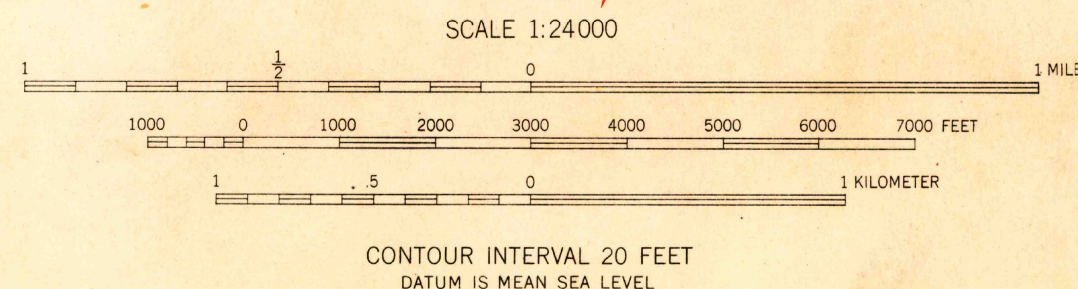


U.S.G.S.
FILE COPY
Inspection and Editing



Mapped, edited, and published by the Geological Survey
Control by USGS and USC&GS
Topography from aerial photographs by multiplex methods
Aerial photographs taken 1946-1947. Field check 1949 and 1950
Polyconic projection. 1927 North American datum
10,000-foot grids based on Maryland coordinate system and
West Virginia coordinate system, north zone
Contours in strip mine areas compiled from 1947 photography
Dashed contours indicate strip mining subsequent to photography

TRUE NORTH
MAGNETIC NORTH
APPROXIMATE MEAN
DECLINATION, 1950



USGS
Historical File
Topographic Division

ROAD CLASSIFICATION
HARD-SURFACE ALL WEATHER ROADS DRY WEATHER ROADS
Heavy-duty ———— +LANE/LANE Improved dirt ————
Medium-duty ———— +LANE/LANE Unimproved dirt ————
Loose-surface, graded, or narrow hard-surface - - - - -
U. S. Route State Route

LONAONING, MD.-W. VA.
SW/4 FROSTBURG 15' QUADRANGLE
N3930-W7852.5/7.5

EDITION OF 1951

U.S.G.S.
FILE COPY
Inspection and Editing

THIS MAP COMPLIES WITH NATIONAL MAP ACCURACY STANDARDS
FOR SALE BY U. S. GEOLOGICAL SURVEY, WASHINGTON 25, D. C.
A FOLDER DESCRIBING TOPOGRAPHIC MAPS AND SYMBOLS IS AVAILABLE ON REQUEST