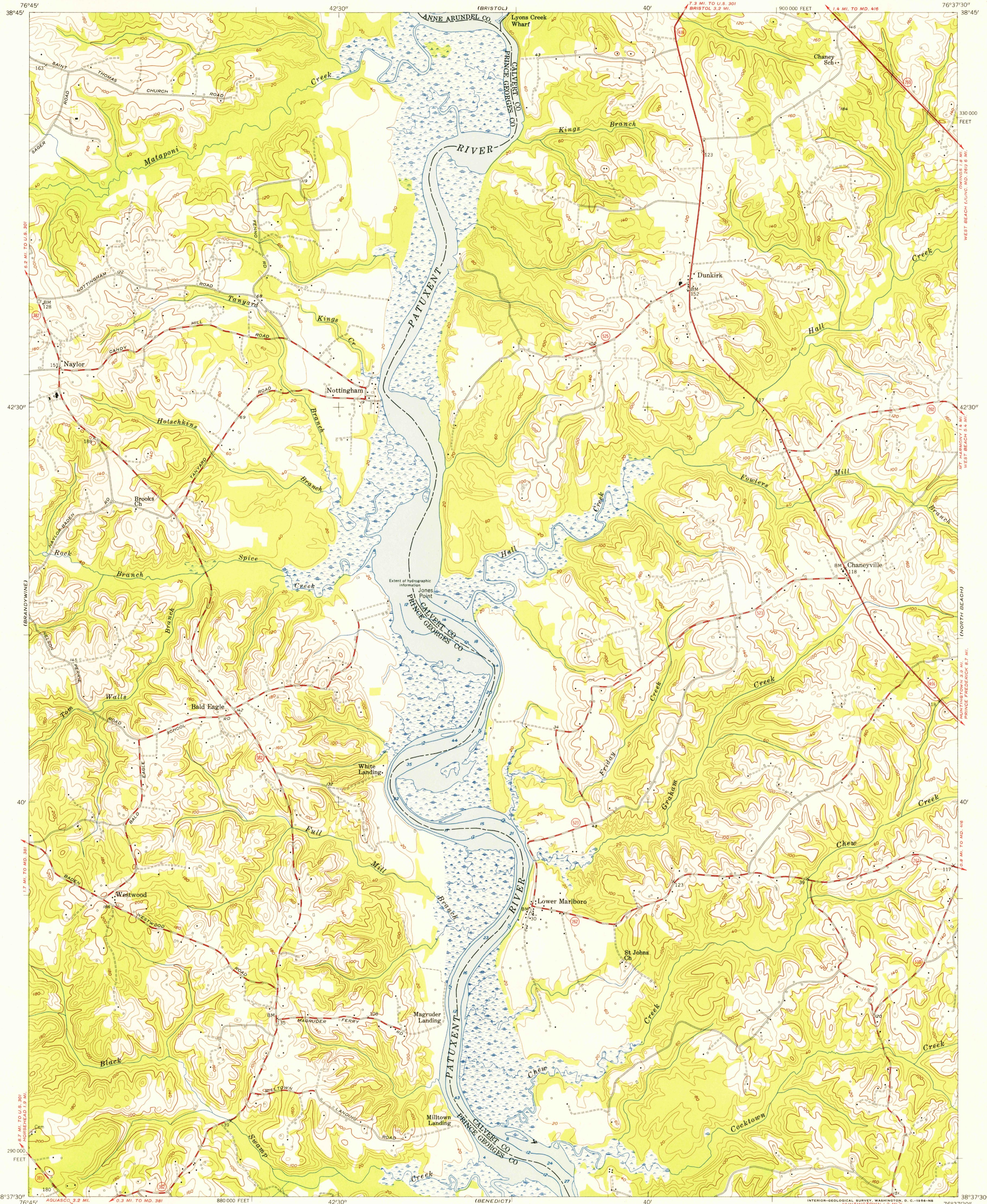


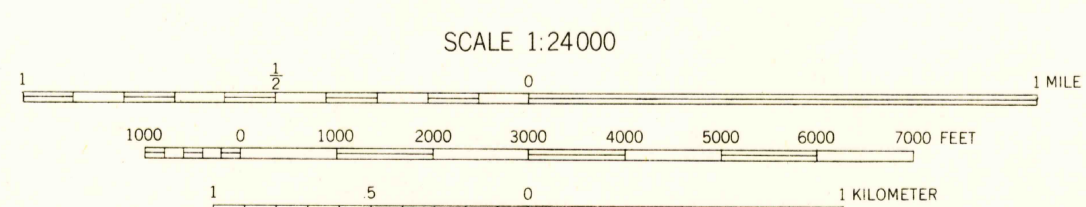
UNITED STATES
DEPARTMENT OF THE INTERIOR
GEOLOGICAL SURVEY

LOWER MARLBORO QUADRANGLE
MARYLAND
7.5 MINUTE SERIES (TOPOGRAPHIC)
NW/4 PRINCE FREDERICK 15' QUADRANGLE



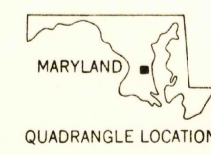
U.S.G.S.
FILE COPY
TOPOGRAPHIC DIVISION

Mapped, edited, and published by the Geological Survey
Control by USGS and USC&GS
Culture and drainage in part compiled from aerial photographs taken 1953. Topography enlarged from 1:62,500 scale map of Prince Frederick quadrangle, 15-minute series. Original map by plane-table surveys 1934-1935. Revised 1953
Hydrography from USC&GS chart 539, dated 1951
Polyconic projection. 1927 North American datum
10,000-foot grid based on Maryland coordinate system



SCALE 1:24,000
CONTOUR INTERVAL 20 FEET
DATUM IS MEAN SEA LEVEL
DEPTH CURVES AND SOUNDINGS IN FEET—DATUM IS MEAN LOW WATER
SHORELINE SHOWN REPRESENTS THE APPROXIMATE LINE OF MEAN HIGH WATER
THE MEAN RANGE OF TIDE IS 2.5 FEET
THIS MAP COMPLIES WITH NATIONAL MAP ACCURACY STANDARDS
FOR SALE BY U. S. GEOLOGICAL SURVEY, WASHINGTON 25, D. C.
A FOLDER DESCRIBING TOPOGRAPHIC MAPS AND SYMBOLS IS AVAILABLE ON REQUEST

USGS
Historical File
Topographic Division



ROAD CLASSIFICATION
Heavy-duty ——— Light-duty ———
Medium-duty ——— Unimproved dirt ———
U. S. Route □ State Route ○

LOWER MARLBORO, MD.
NW/4 PRINCE FREDERICK 15' QUADRANGLE
N 3837.5 — W 7637.5 / 7.5

U.S.G.S.
FILE COPY
TOPOGRAPHIC DIVISION

1953

MAR 23 1956

2485