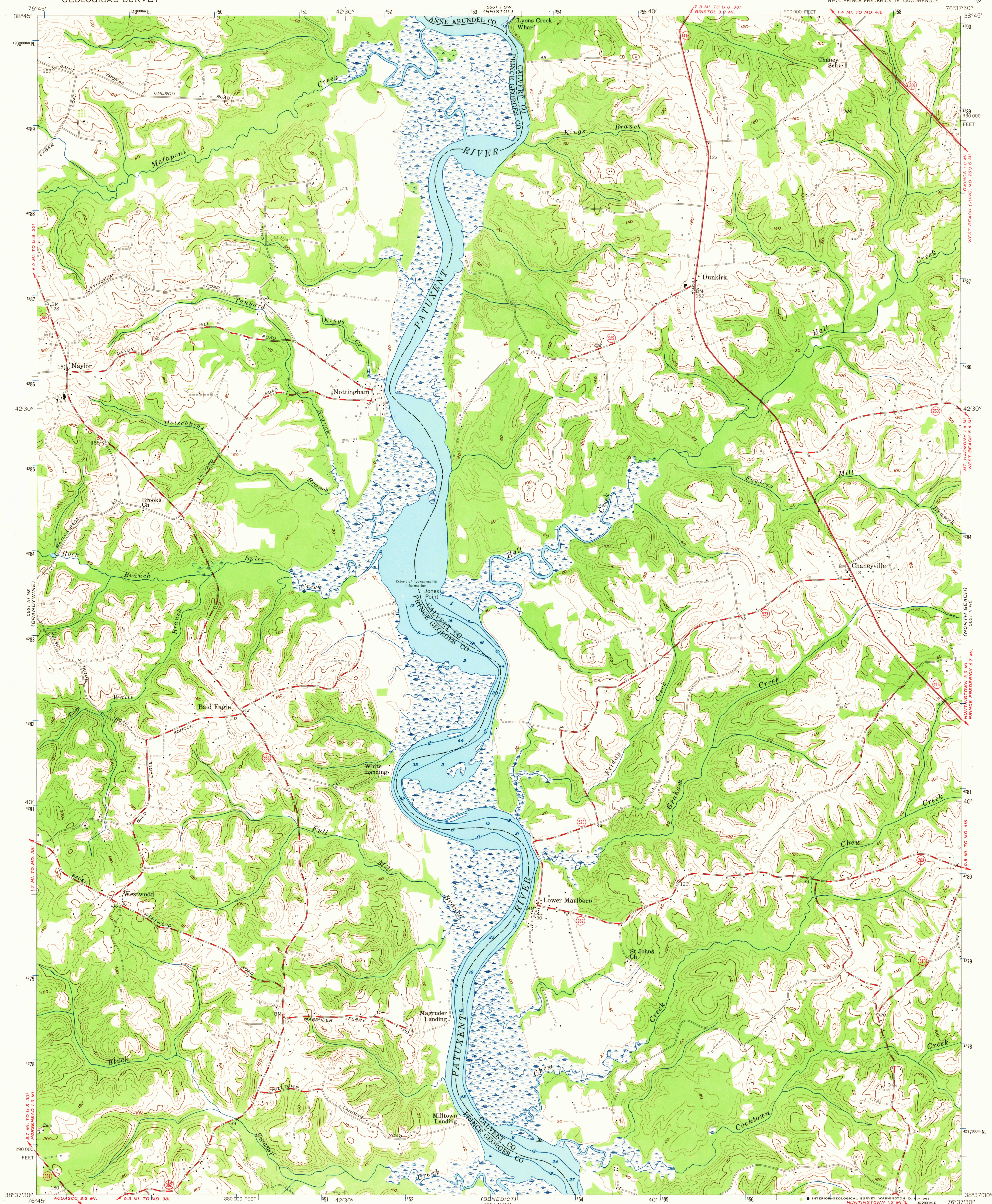
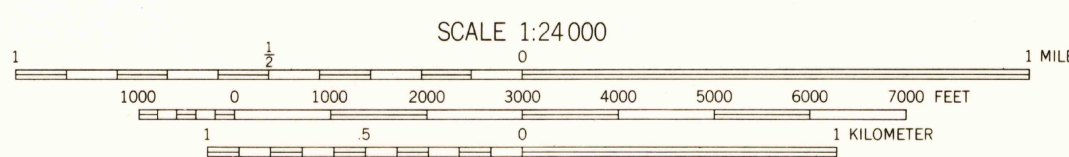
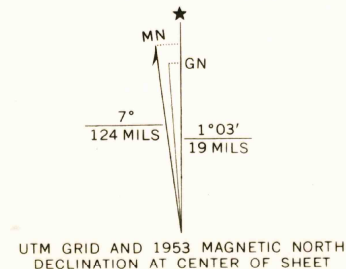


UNITED STATES  
DEPARTMENT OF THE INTERIOR  
GEOLOGICAL SURVEY

LOWER MARLBORO QUADRANGLE  
MARYLAND  
7.5 MINUTE SERIES (TOPOGRAPHIC)  
NW 1/4 PRINCE FREDERICK 15' QUADRANGLE



Mapped, edited, and published by the Geological Survey  
Control by USGS and USC&GS  
Culture and drainage in part compiled from aerial photographs taken 1953. Topography enlarged from 1:62,500 scale map of Prince Frederick quadrangle, 15-minute series. Original map by plane-table surveys 1934-1935. Revised 1953  
Hydrography from USC&GS chart 539, dated 1951  
Polyconic projection. 1927 North American datum  
10,000-foot grid based on Maryland coordinate system  
1000-meter Universal Transverse Mercator grid ticks, zone 18, shown in blue



DEPTH CURVES AND SOUNDINGS IN FEET-DATUM IS MEAN LOW WATER  
SHORELINE SHOWN REPRESENTS THE APPROXIMATE LINE OF MEAN HIGH WATER  
THE MEAN RANGE OF TIDE IS 2.5 FEET

THIS MAP COMPLIES WITH NATIONAL MAP ACCURACY STANDARDS  
FOR SALE BY U. S. GEOLOGICAL SURVEY, WASHINGTON, D. C. 20422  
A FOLDER DESCRIBING TOPOGRAPHIC MAPS AND SYMBOLS IS AVAILABLE ON REQUEST

USGS  
Historical File  
Topographic Division



ROAD CLASSIFICATION  
Heavy-duty ——— Light-duty ———  
Medium-duty ——— Unimproved dirt ———  
U. S. Route ——— State Route ———

U.S.G.S.  
FILE COPY  
TOPOGRAPHIC DIVISION

LOWER MARLBORO, MD.  
NW 1/4 PRINCE FREDERICK 15' QUADRANGLE  
N 3837.5 - W 7637.5/7.5

1953

AMS 5661 II NW-SERIES V833