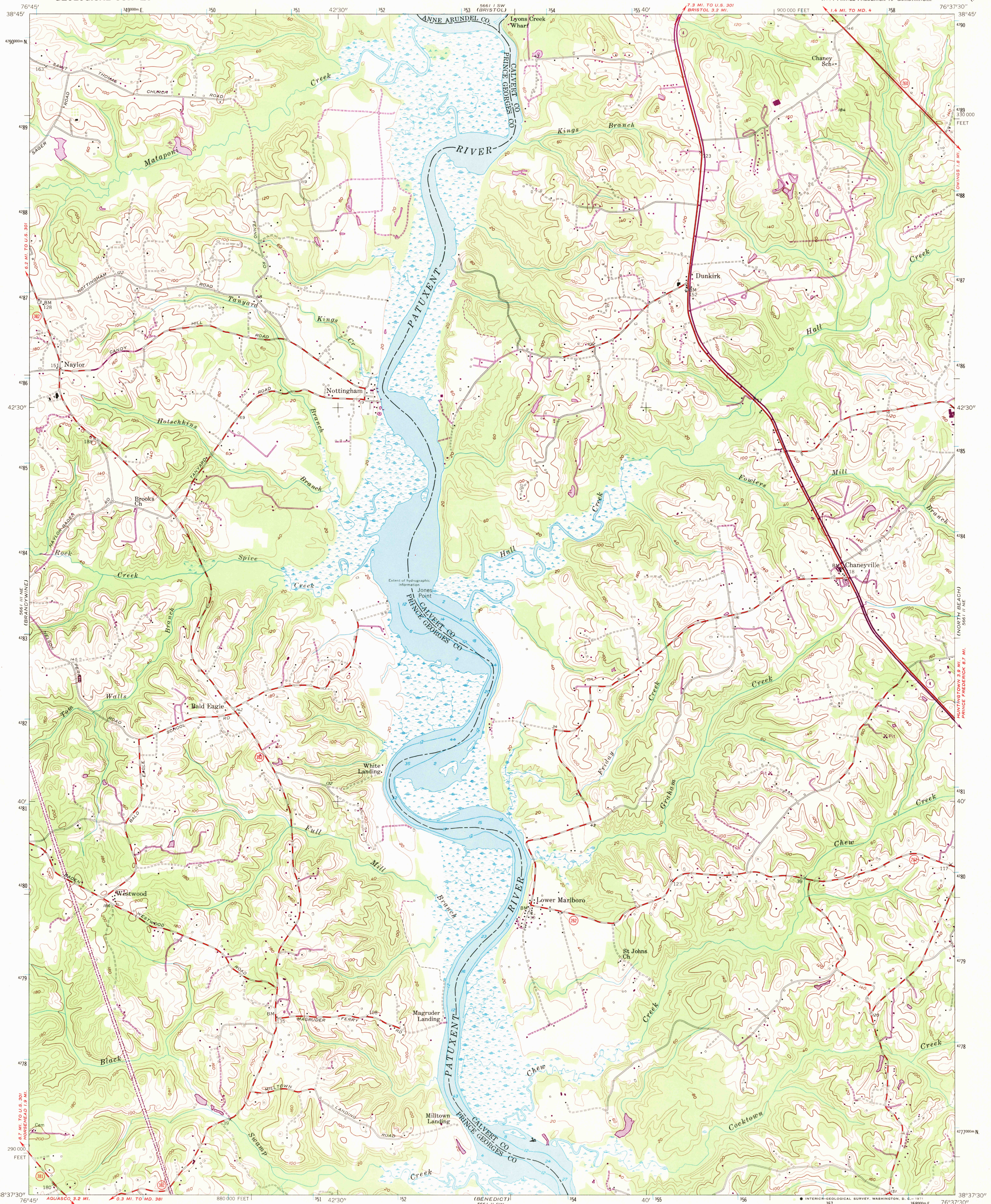
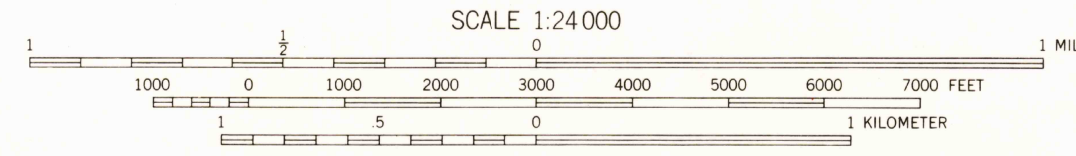
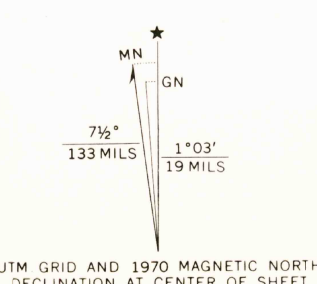


UNITED STATES
DEPARTMENT OF THE INTERIOR
GEOLOGICAL SURVEY

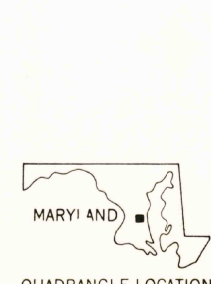
LOWER MARLBORO QUADRANGLE
MARYLAND
7.5 MINUTE SERIES (TOPOGRAPHIC)
NW 1/4 PRINCE FREDERICK 15' QUADRANGLE



Mapped, edited, and published by the Geological Survey
Control by USGS and USC&GS
Culture and drainage in part compiled from aerial photographs taken 1953. Topography enlarged from 1:62,500 scale map of Prince Frederick quadrangle, 15-minute series. Original map by plane-table surveys 1934-1935. Revised 1953
Hydrography from USC&GS chart 539, dated 1951
Polyconic projection. 1927 North American datum
10,000-foot grid based on Maryland coordinate system
1000-meter Universal Transverse Mercator grid ticks, zone 18, shown in blue
Revisions shown in purple compiled from aerial photographs taken 1970. This information not field checked



DATUM IS MEAN SEA LEVEL
DEPTH CURVES AND SOUNDINGS IN FEET-DATUM IS MEAN LOW WATER
SHORELINE SHOWN REPRESENTS THE APPROXIMATE LINE OF MEAN HIGH WATER
THE MEAN RANGE OF TIDE IS 2.5 FEET
THIS MAP COMPLIES WITH NATIONAL MAP ACCURACY STANDARDS
FOR SALE BY U. S. GEOLOGICAL SURVEY, WASHINGTON, D. C. 20422
A FOLDER DESCRIBING TOPOGRAPHIC MAPS AND SYMBOLS IS AVAILABLE ON REQUEST



ROAD CLASSIFICATION
Heavy-duty ——— Light-duty ———
Medium-duty ——— Unimproved dirt ———
U. S. Route ——— State Route ———

LOWER MARLBORO, MD.
NW 1/4 PRINCE FREDERICK 15' QUADRANGLE
N 3837.5 - W 7637.5/7.5
1953
PHOTOREVISED 1970
AMS 5661 II NW-SERIES V833