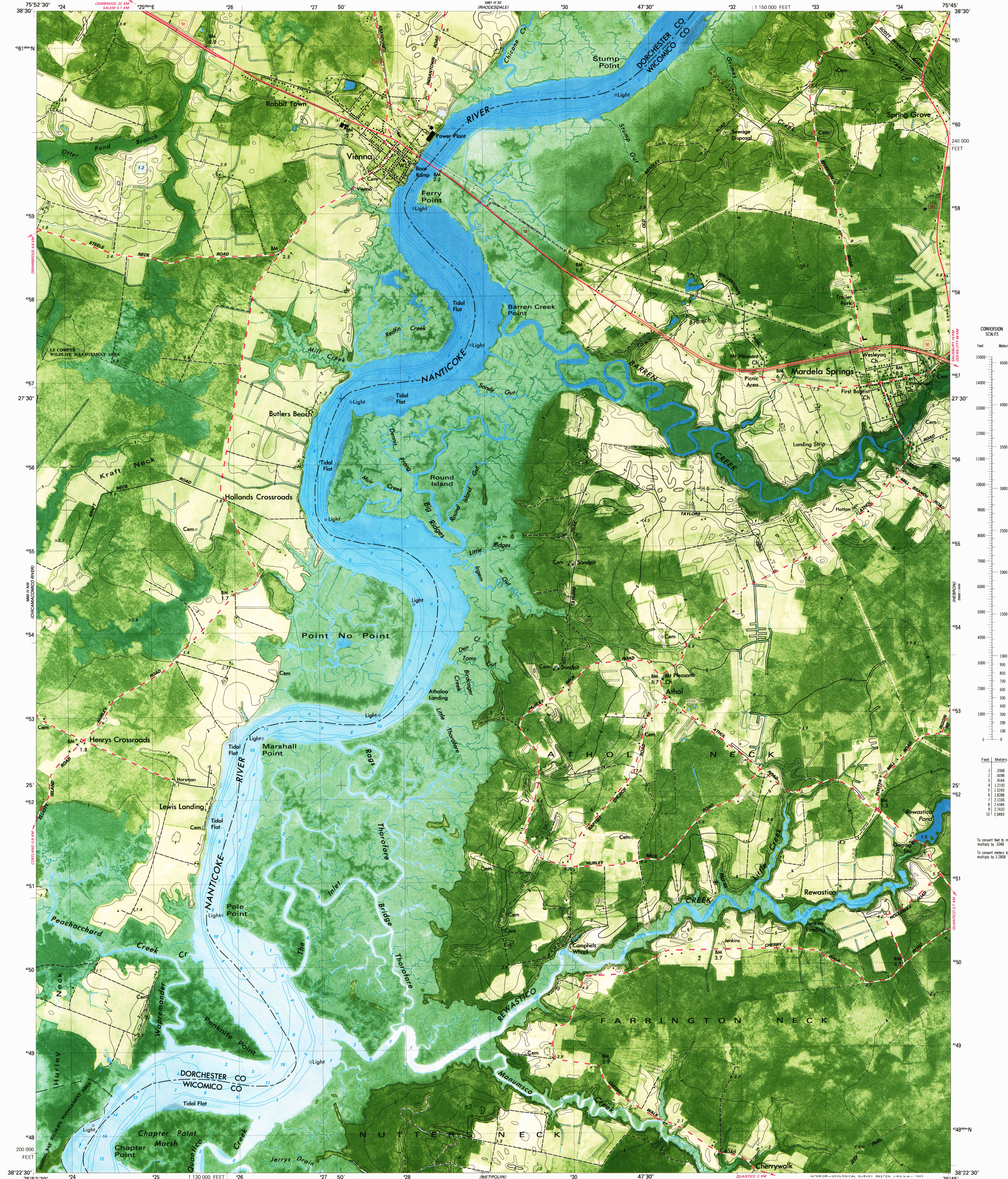
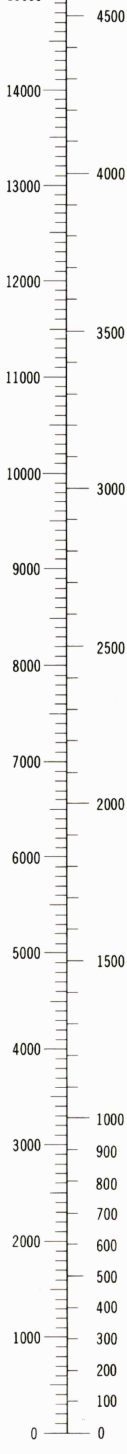


UNITED STATES
DEPARTMENT OF THE INTERIOR
GEOLOGICAL SURVEY

MARDELA SPRINGS QUADRANGLE
MARYLAND
7.5 MINUTE SERIES ORTHOPHOTOMAP (TOPOGRAPHIC)



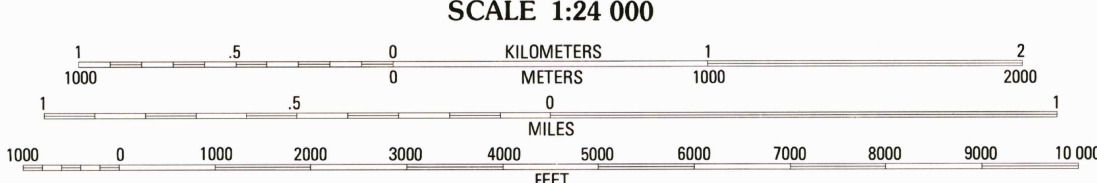
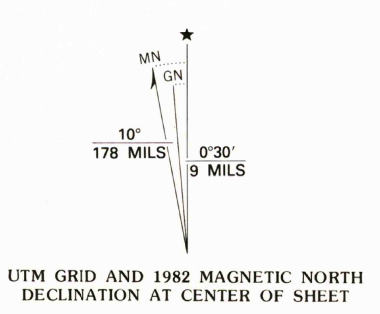
CONVERSION
SCALES



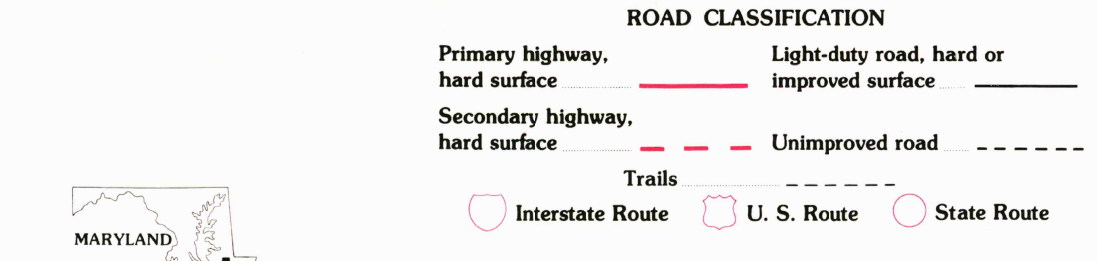
Feet	Meters
1	3048
2	6096
3	9144
4	12192
5	15240
6	18288
7	21336
8	24384
9	27432
10	30480

To convert feet to meters
multiply by 3048
To convert meters to feet
multiply by 3.2808

Produced by the United States Geological Survey
Control by USGS and NOS/NOAA
Orthophotomaps prepared from aerial photograph taken
March 25, 1977. Topography by planetable surveys
1979. Field checked 1979. Map edited 1982
Supersedes Army Map Service topographic map dated 1942
Selected hydrographic data compiled from NOS chart 12261 (1980)
This information is not intended for navigational purposes
Projection and 1000-meter grid, zone 18: Universal
Transverse Mercator
10,000-foot grid ticks based on Maryland coordinate system
1927 North American Datum
To place on the predicted North American Datum 1983
move the projection lines 8 meters south and
30 meters west as shown by dashed corner ticks
There may be private inholdings within the boundaries of
the National or State reservations shown on this map



SCALE 1:24 000
CONTOUR INTERVAL 1 METER
NATIONAL GEODETIC VERTICAL DATUM OF 1929
CONTROL AND OTHER ELEVATIONS SHOWN TO THE NEAREST 0.1 METER
DEPTH CURVES AND SOUNDINGS IN METERS—DATUM IS MEAN LOW WATER
THE RELATIONSHIP BETWEEN THE TWO DATUMS IS VARIABLE
THE MEAN RANGE OF TIDE IS APPROXIMATELY 0.7 METER
THIS MAP COMPLIES WITH NATIONAL MAP ACCURACY STANDARDS
FOR SALE BY U. S. GEOLOGICAL SURVEY, RESTON, VIRGINIA 22092
A FOLDER DESCRIBING TOPOGRAPHIC MAPS AND SYMBOLS IS AVAILABLE ON REQUEST



MARDELA SPRINGS, MD.
N3822.5 - W7545.7.5
1982
DMA 5860 IV NE - SERIES V8330

