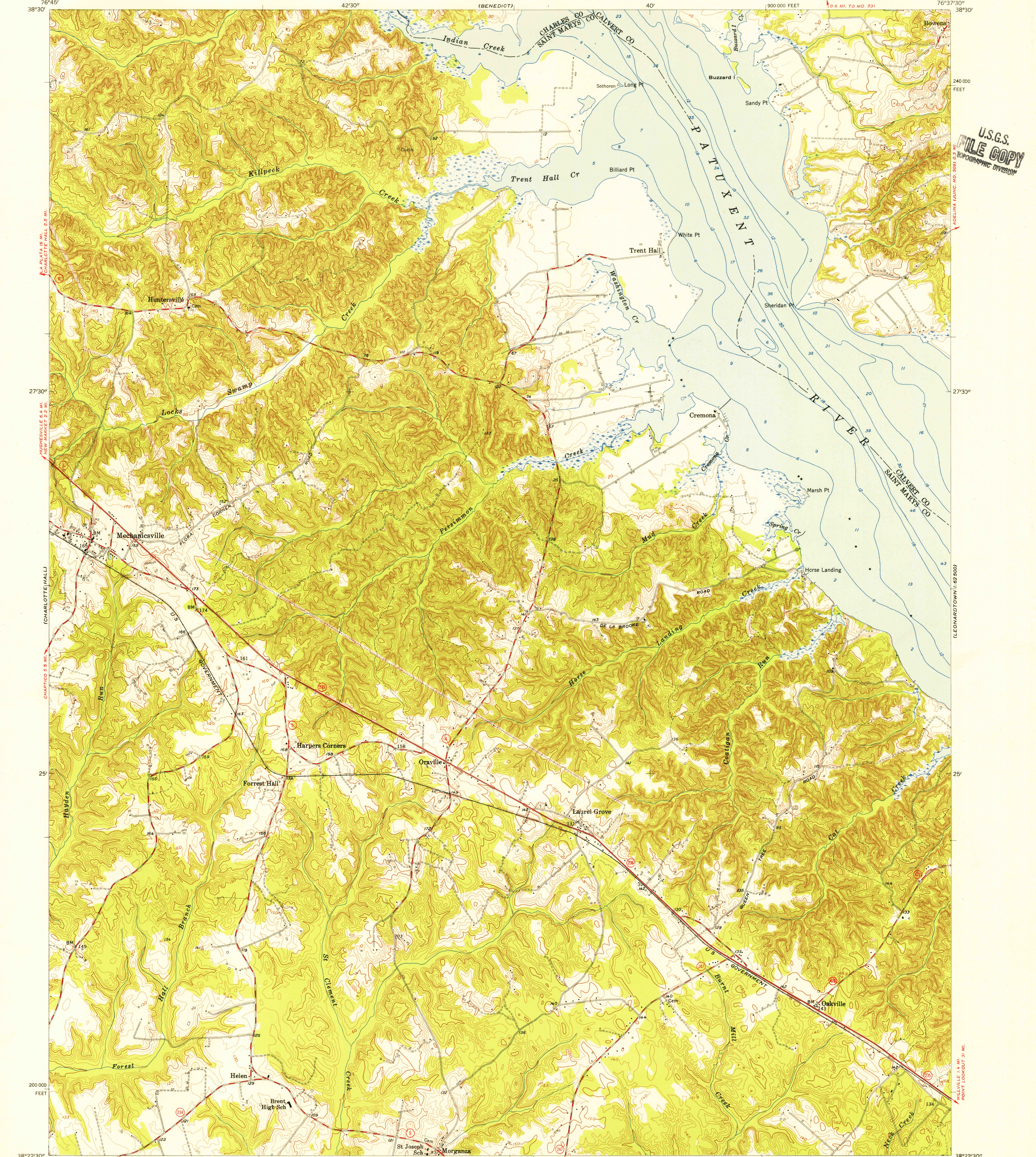


UNITED STATES
DEPARTMENT OF THE INTERIOR
GEOLOGICAL SURVEY

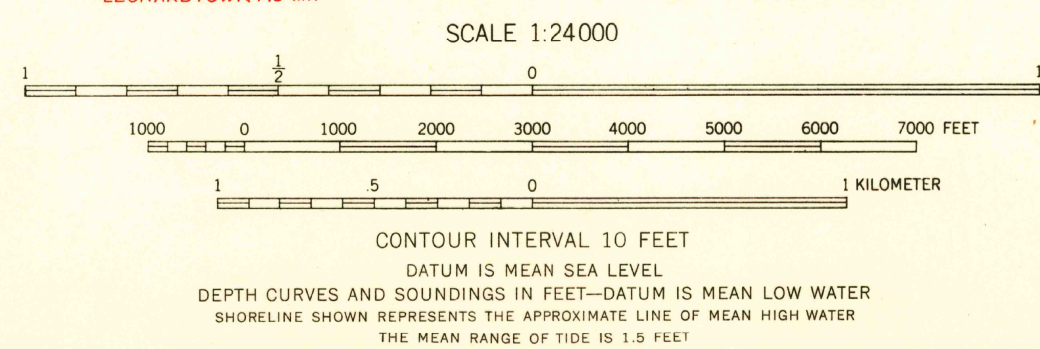
MECHANICSVILLE QUADRANGLE
MARYLAND
7.5 MINUTE SERIES (TOPOGRAPHIC)
NW 1/4 LEONARDTOWN 15' QUADRANGLE



U.S.G.S.
FILE COPY
TOPOGRAPHIC DIVISION

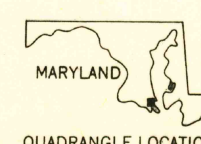
Mapped, edited, and published by the Geological Survey
Control by USGS and USC&GS
Topography from aerial photographs by stereophotogrammetric
methods. Aerial photographs taken 1952. Field check 1953
Hydrography from USC&GS chart 539 dated 1951
Polyconic projection. 1927 North American datum
10,000-foot grid based on Maryland coordinate system
Unchecked elevations are shown in brown

TRUE NORTH
MAGNETIC NORTH
APPROXIMATE MEAN
DECLINATION, 1953



THIS MAP COMPLIES WITH NATIONAL MAP ACCURACY STANDARDS
FOR SALE BY U. S. GEOLOGICAL SURVEY, WASHINGTON 25, D. C.
A FOLDER DESCRIBING TOPOGRAPHIC MAPS AND SYMBOLS IS AVAILABLE ON REQUEST

USGS
Historical File
Topographic Division



U.S.G.S.
FILE COPY
TOPOGRAPHIC DIVISION

ROAD CLASSIFICATION
Heavy-duty ——— Light-duty ———
Medium-duty ——— Unimproved dirt ———
U. S. Route ——— State Route ———

MECHANICSVILLE, MD.
NW 1/4 LEONARDTOWN 15' QUADRANGLE
N 3822.5 - W 7637.5 / 7.5

1953

MAR 2 1956

2115