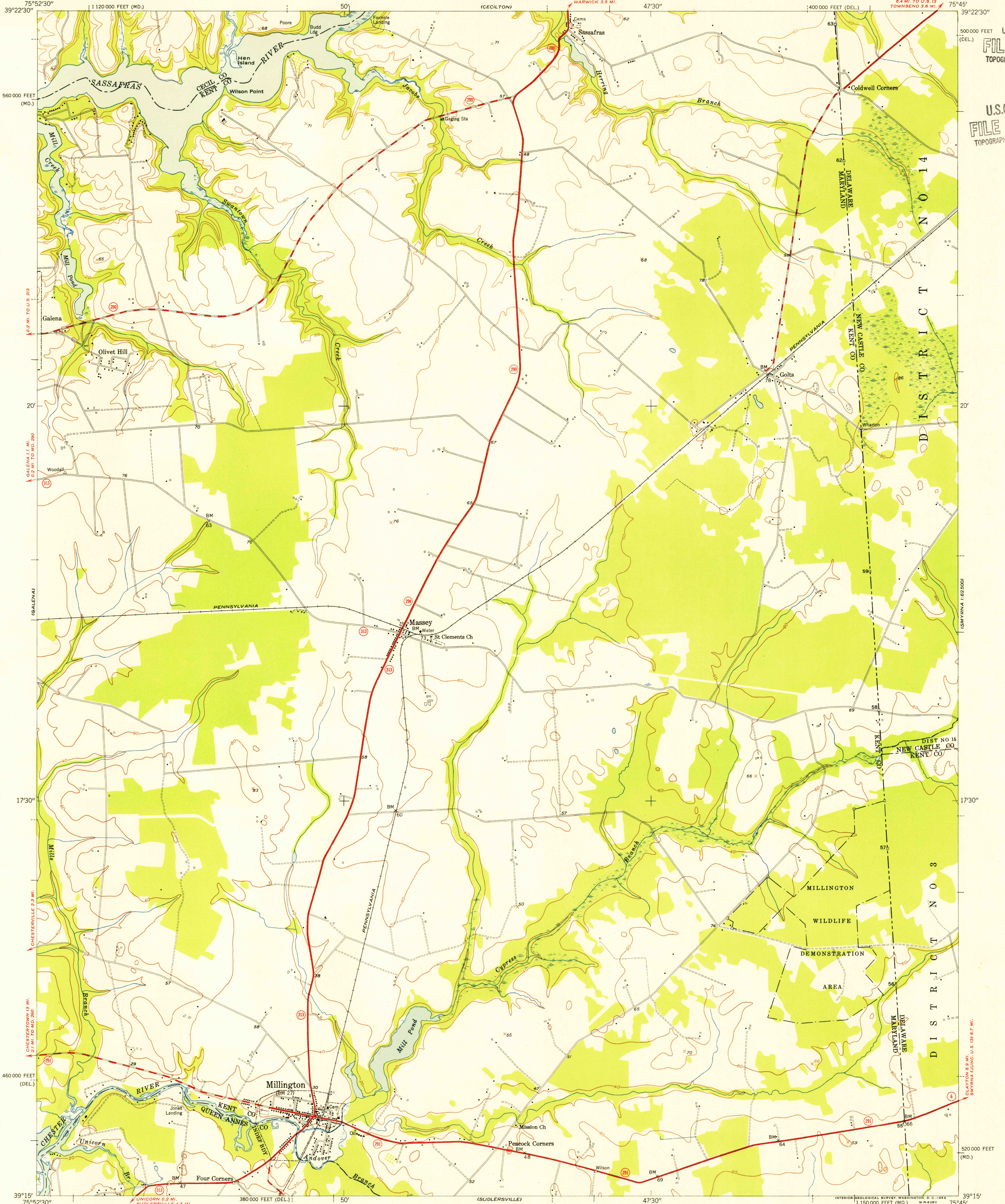


UNITED STATES
DEPARTMENT OF THE INTERIOR
GEOLOGICAL SURVEY

UNITED STATES
DEPARTMENT OF THE ARMY
CORPS OF ENGINEERS

MILLINGTON QUADRANGLE
MARYLAND-DELAWARE
7.5 MINUTE SERIES (TOPOGRAPHIC)
SE/4 CECILTON 15' QUADRANGLE



U.S.G.S.
FILE COPY
TOPOGRAPHIC DIVISION

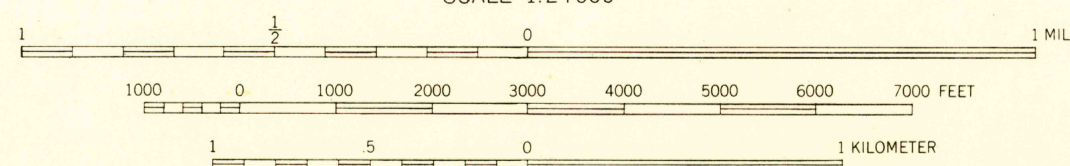
U.S.G.S.
FILE COPY
TOPOGRAPHIC DIVISION

Mapped by the Army Map Service
Edited and published by the Geological Survey
Control by USGS and USC&GS

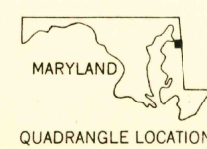
Culture and drainage in part compiled from aerial photographs
taken 1942. Topography by plane-table surveys 1944
Culture revised by the Geological Survey 1953

Polyconic projection. 1927 North American datum
10,000-foot grids based on Maryland and Delaware
coordinate systems

TRUE NORTH
MAGNETIC NORTH
APPROXIMATE MEAN
DECLINATION, 1953



USGS
Historical File
Topographic Division



ROAD CLASSIFICATION
Heavy-duty 4 LANE 16 LANE Light-duty
Medium-duty 4 LANE 16 LANE Unimproved dirt
U. S. Route State Route

U.S.G.S.
FILE COPY
TOPOGRAPHIC DIVISION

MILLINGTON, MD.-DEL.
SE/4 CECILTON 15' QUADRANGLE
N3915-W7545/7.5
1953

APR 22 1955

2470