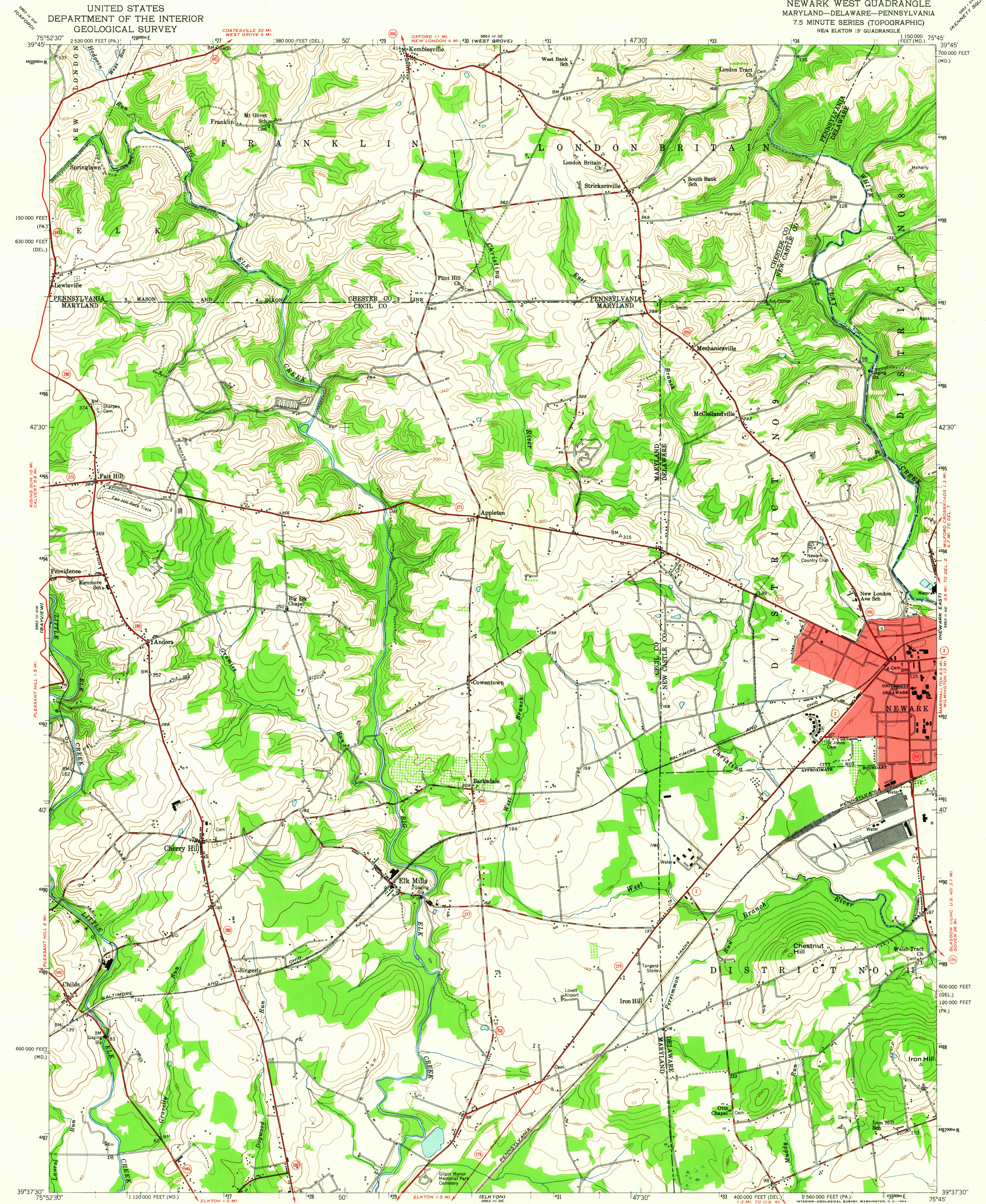
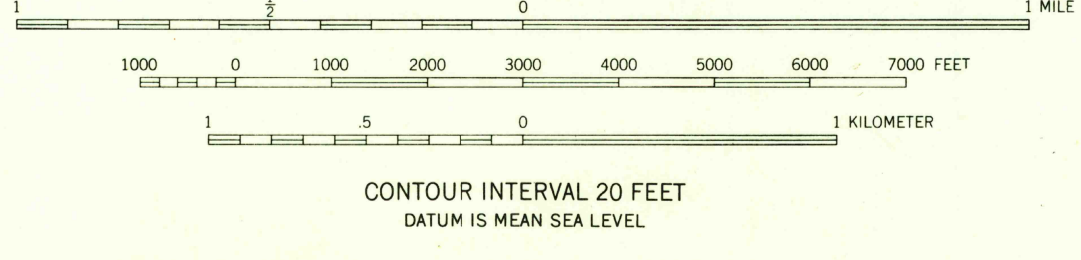
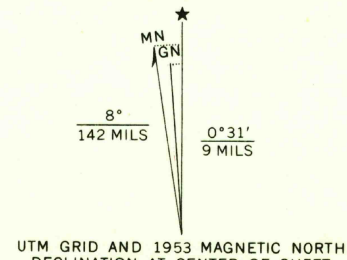


UNITED STATES
DEPARTMENT OF THE INTERIOR
GEOLOGICAL SURVEY

NEWARK WEST QUADRANGLE
MARYLAND—DELAWARE—PENNSYLVANIA
7.5 MINUTE SERIES (TOPOGRAPHIC)
NE/4 ELKTON 15' QUADRANGLE



Mapped, edited, and published by the Geological Survey
Control by USGS and USC&GS
Culture and drainage in part compiled from aerial photographs
taken 1952. Topography by plane-table surveys 1939 and 1940
Revised 1953
Polyconic projection. 1927 North American datum
10,000-foot grids based on Maryland and Delaware coordinate
systems, and Pennsylvania coordinate system, south zone
Red tint indicates area in which only
landmark buildings are shown
1000-meter Universal Transverse Mercator grid ticks,
zone 18, shown in blue



ROAD CLASSIFICATION	
Heavy-duty	Light-duty
Medium-duty	Unimproved dirt
State Route	

NEWARK WEST, MD.—DEL.—PA.
NE/4 ELKTON 15' QUADRANGLE
N3937.5-W7545/7.5
1953
AMS 5863 III NE—SERIES V832

THIS MAP COMPLIES WITH NATIONAL MAP ACCURACY STANDARDS
FOR SALE BY U. S. GEOLOGICAL SURVEY, WASHINGTON 25, D. C.
A FOLDER DESCRIBING TOPOGRAPHIC MAPS AND SYMBOLS IS AVAILABLE ON REQUEST

3680
APR 20 1964