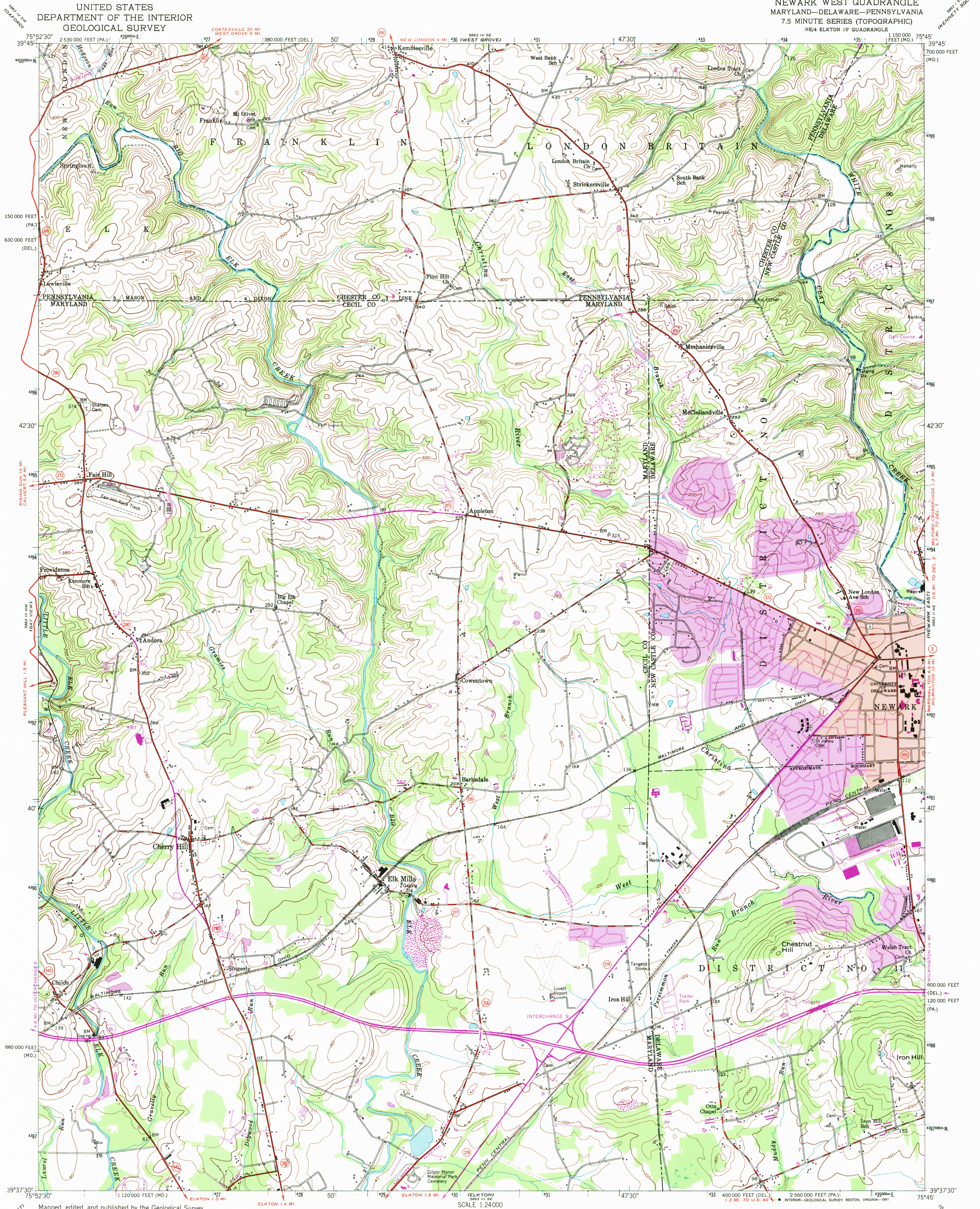


UNITED STATES
DEPARTMENT OF THE INTERIOR
GEOLOGICAL SURVEY

NEWARK WEST QUADRANGLE
MARYLAND—DELAWARE—PENNSYLVANIA
7.5 MINUTE SERIES (TOPOGRAPHIC)
NE 1/4 ELKTON 15' QUADRANGLE



Mapped, edited, and published by the Geological Survey
Control by USGS and USC&GS

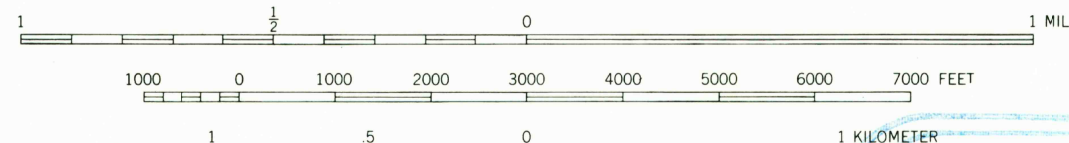
Culture and drainage in part compiled from aerial photographs
taken 1952. Topography by plane-table surveys 1939 and 1940
Revised 1953

Polyconic projection. 1927 North American datum
10,000-foot grids based on Maryland and Delaware coordinate
systems, and Pennsylvania coordinate system, south zone

Red tint indicates area in which only
landmark buildings are shown

1000-meter Universal Transverse Mercator grid ticks,
zone 18, shown in blue
Map photoinspected 1990
No major culture or drainage changes observed

UTM GRID AND 1970 MAGNETIC NORTH
DECLINATION AT CENTER OF SHEET
The difference between 1927 North American Datum and North
American Datum of 1983 (NAD 83) for 7.5-minute intersections
is given in USGS Bulletin 1875. The NAD 83 is shown by
dashed corner ticks



CONTOUR INTERVAL 20 FEET
NATIONAL GEODETIC VERTICAL DATUM OF 1929
THIS MAP COMPLIES WITH NATIONAL MAP ACCURACY STANDARDS
FOR SALE BY U.S. GEOLOGICAL SURVEY
DENVER, COLORADO 80225, OR RESTON, VIRGINIA 22092
A FOLDER DESCRIBING TOPOGRAPHIC MAPS AND SYMBOLS IS AVAILABLE ON REQUEST

USGS HISTORICAL
MAP ARCHIVES
AUG 27 1991
REC'D FILE COPY
Revisions shown in purple compiled from aerial photographs
taken 1970. This information not field checked
Purple tint indicates extension of urban areas



ROAD CLASSIFICATION
Heavy-duty ——— Light-duty ———
Medium-duty ——— Unimproved dirt ———
State Route ———

NEWARK WEST, MD.—DEL.—PA.
NE 1/4 ELKTON 15' QUADRANGLE
39075F7-TF-024
PHOTOINSPECTED 1990
1953
PHOTOREVISED 1970
DMA 5863 III NE—SERIES V832