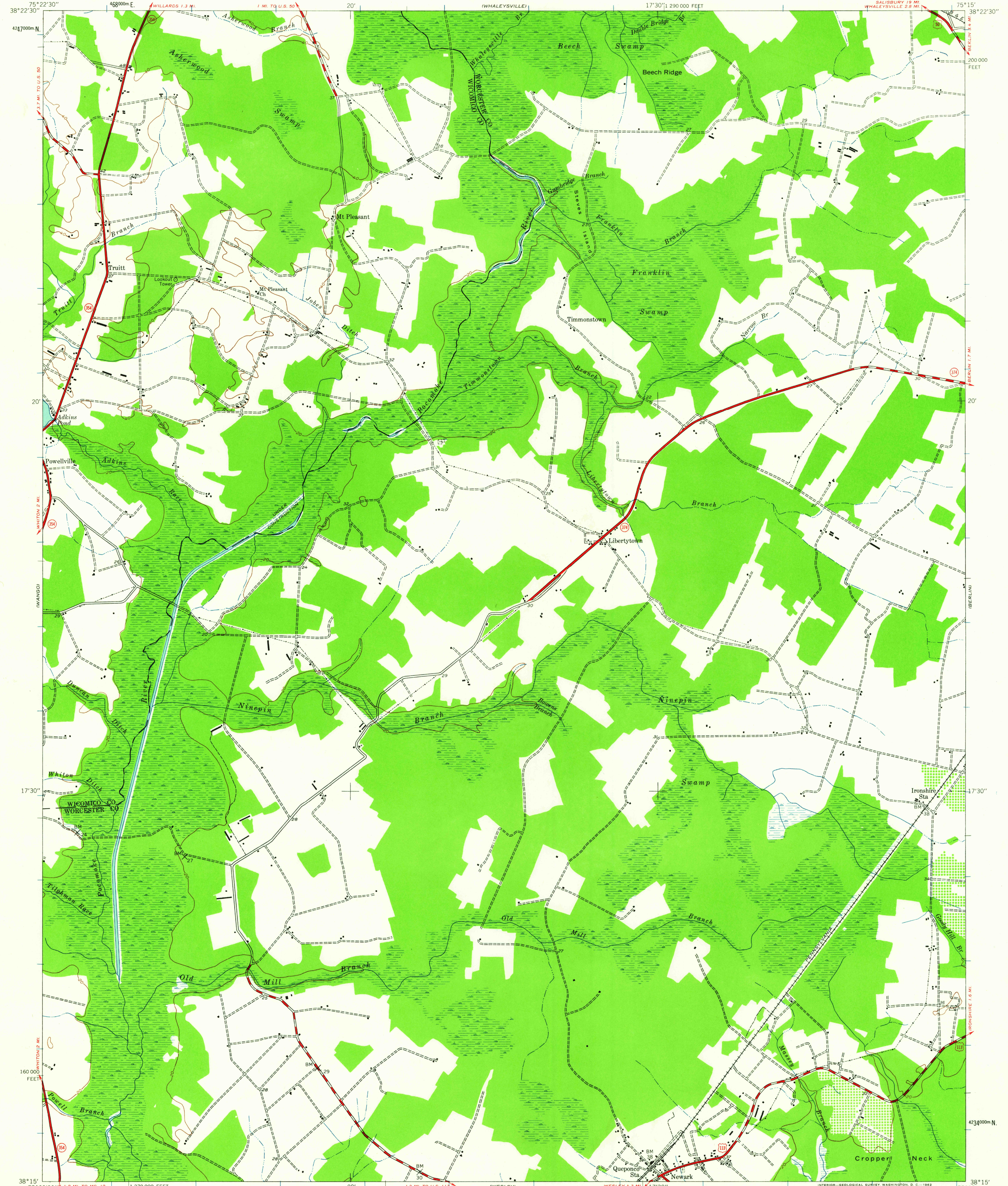


UNITED STATES  
DEPARTMENT OF THE INTERIOR  
GEOLOGICAL SURVEY

NINEPIN QUADRANGLE  
MARYLAND  
7.5 MINUTE SERIES (TOPOGRAPHIC)  
SE/4 PITTSVILLE 15' QUADRANGLE  
SALISBURY 18 MI.  
WHALEYSVILLE 2.8 MI.



Map by the Army Map Service  
Published for civil use by the Geological Survey  
Control by USC&GS

Topography by photogrammetric methods from aerial photographs  
taken 1942 and planimetric surveys 1942  
Polyconic projection. 1927 North American datum  
10,000-foot grid based on Maryland coordinate system  
1000-meter Universal Transverse Mercator grid ticks,  
zone 18, shown in blue

TRUE NORTH  
MAGNETIC NORTH  
APPROXIMATE MEAN  
DECLINATION, 1942

SCALE 1:24,000  
1 0 1000 2000 3000 4000 5000 6000 7000 FEET  
1 0 5 10 KILOMETER  
CONTOUR INTERVAL 20 FEET  
DATUM IS MEAN SEA LEVEL

USGS  
Historical File  
Topographic Division



ROAD CLASSIFICATION  
Heavy-duty ——— Light-duty ———  
Medium-duty ——— Unimproved dirt ———  
U. S. Route ——— State Route ———

NINEPIN, MD.  
SE/4 PITTSVILLE 15' QUADRANGLE  
N3815-W7515/7.5  
1942

THIS MAP COMPLIES WITH NATIONAL MAP ACCURACY STANDARDS  
FOR SALE BY U. S. GEOLOGICAL SURVEY, WASHINGTON 25, D. C.  
A FOLDER DESCRIBING TOPOGRAPHIC MAPS AND SYMBOLS IS AVAILABLE ON REQUEST

AUG 28 1962

2045