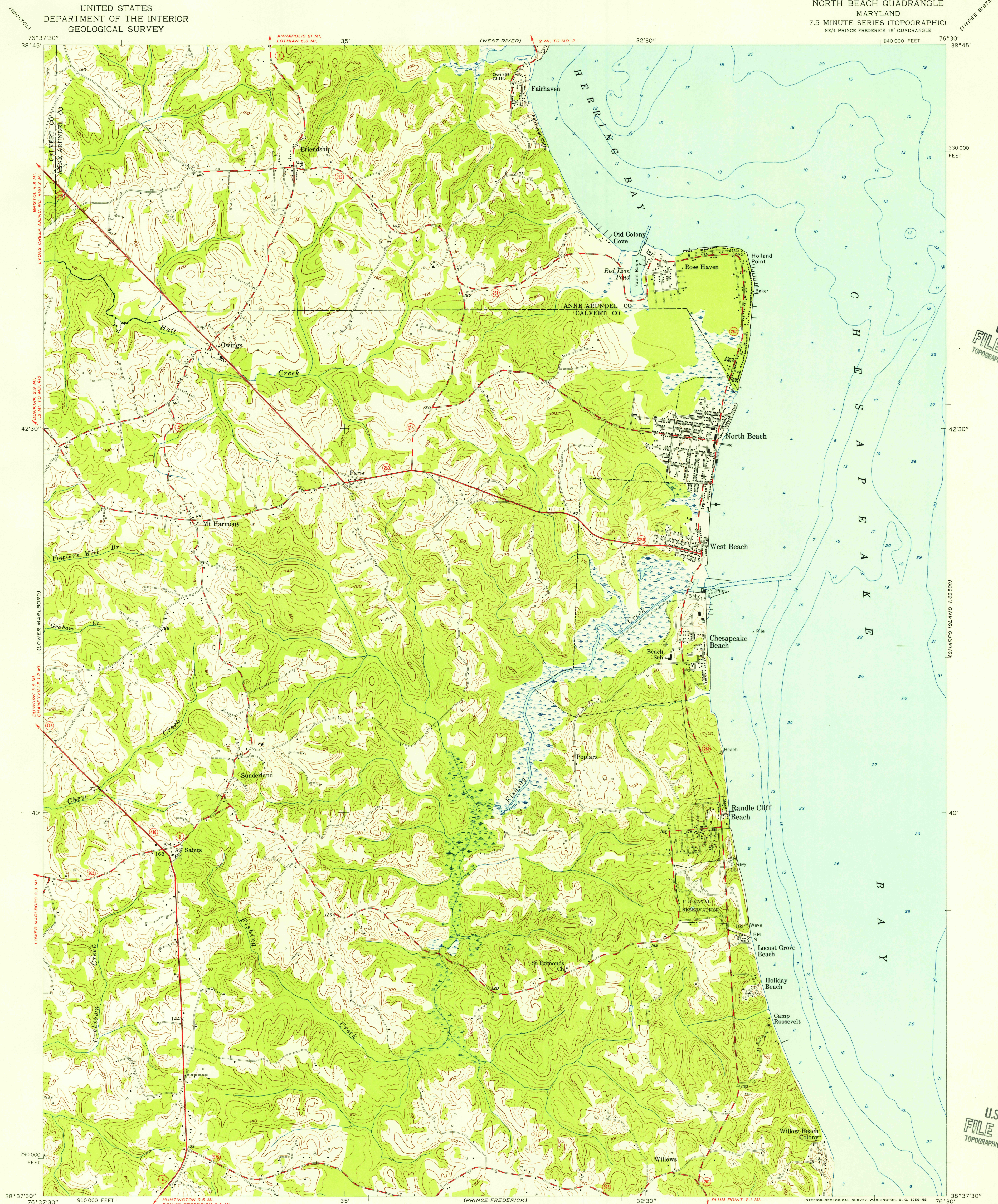


UNITED STATES
DEPARTMENT OF THE INTERIOR
GEOLOGICAL SURVEY

NORTH BEACH QUADRANGLE
MARYLAND
7.5 MINUTE SERIES (TOPOGRAPHIC)
NE/4 PRINCE FREDERICK 15' QUADRANGLE



U.S.G.S.
FILE COPY
TOPOGRAPHIC DIVISION

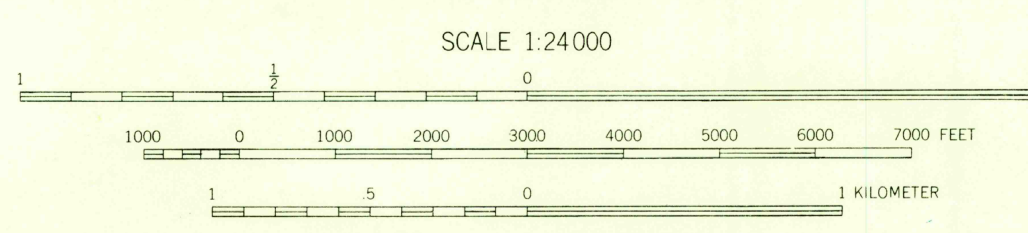
U.S.G.S.
FILE COPY
TOPOGRAPHIC DIVISION

Mapped, edited, and published by the Geological Survey
Control by USGS and USC&GS

Culture and drainage in part compiled from aerial photographs
taken 1953. Topography enlarged from 1:62,500 scale map of
Prince Frederick quadrangle, 15-minute series. Original map
by planetable surveys 1934-1935. Revised 1953
Hydrography from USC&GS chart 551, dated 1954

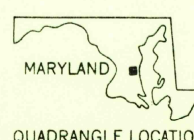
Polyconic projection. 1927 North American datum
10,000-foot grid based on Maryland coordinate system

TRUE NORTH
MAGNETIC NORTH
APPROXIMATE MEAN
DECLINATION, 1953



DEPTH CURVES AND SOUNDINGS IN FEET - DATUM IS MEAN LOW WATER
SHORELINE SHOWN REPRESENTS THE APPROXIMATE LINE OF MEAN HIGH WATER
THE MEAN RANGE OF TIDE IS 1 FOOT AT CHESAPEAKE BEACH
THIS MAP COMPLIES WITH NATIONAL MAP ACCURACY STANDARDS
FOR SALE BY U. S. GEOLOGICAL SURVEY, WASHINGTON 25, D. C.
A FOLDER DESCRIBING TOPOGRAPHIC MAPS AND SYMBOLS IS AVAILABLE ON REQUEST

USGS
Historical File
Topographic Division



ROAD CLASSIFICATION
Heavy-duty ——— Light-duty ———
Medium-duty ——— Unimproved dirt ———
U. S. Route State Route

NORTH BEACH, MD.
NE/4 PRINCE FREDERICK 15' QUADRANGLE
N 3837.5—W 7630.7/5

1953

AUG 21 1956