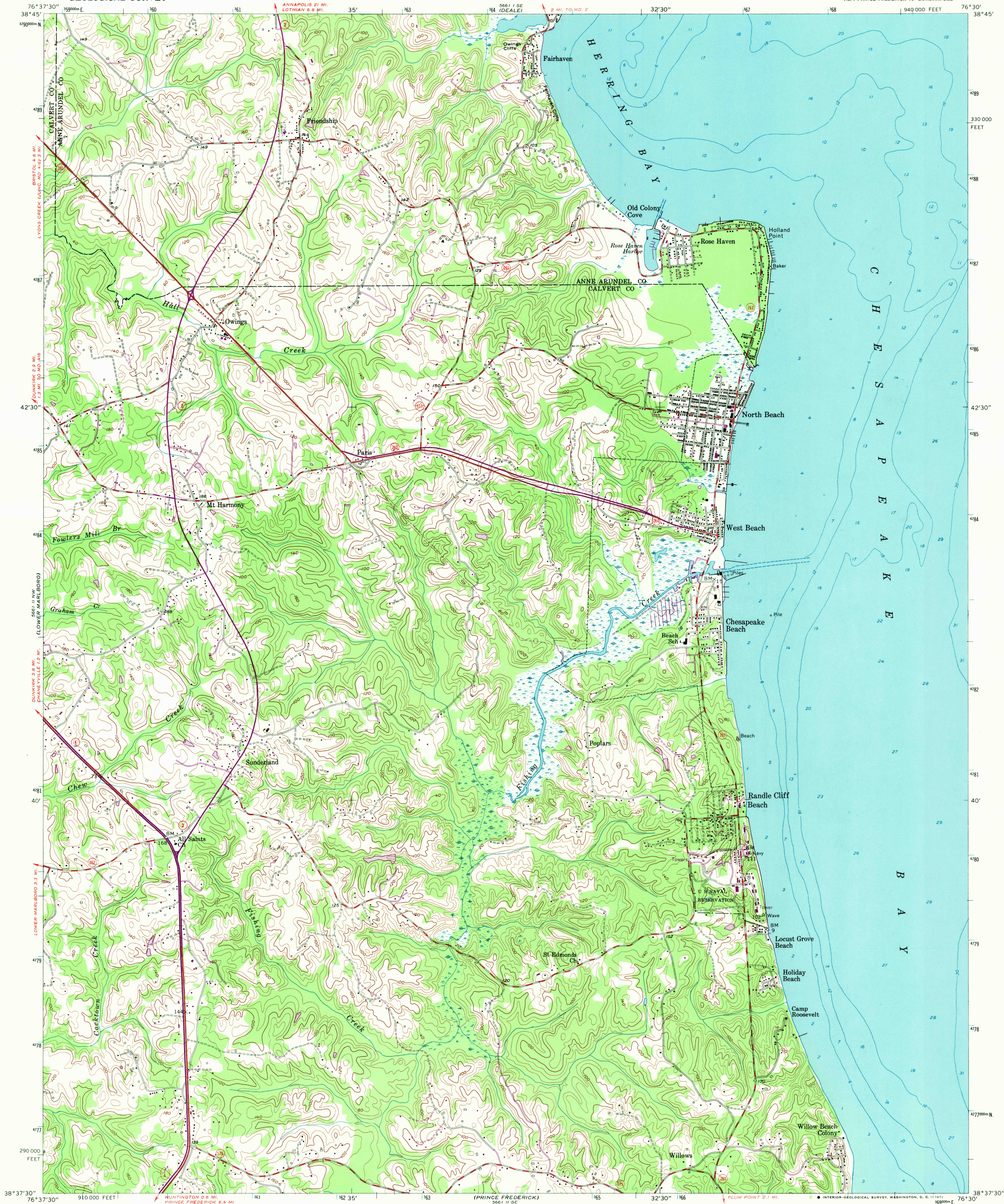
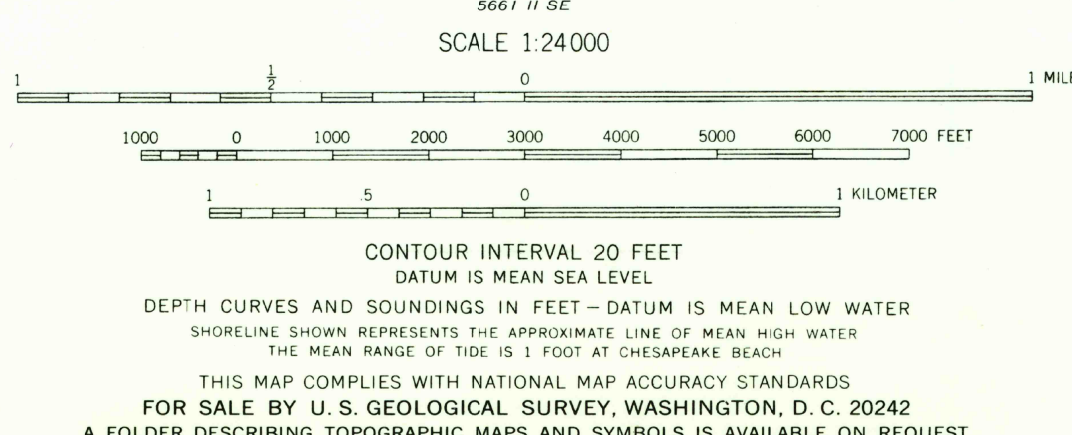
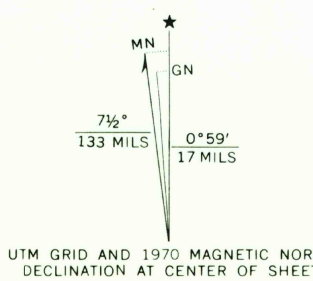


UNITED STATES
DEPARTMENT OF THE INTERIOR
GEOLOGICAL SURVEY

NORTH BEACH QUADRANGLE
MARYLAND
7.5 MINUTE SERIES (TOPOGRAPHIC)
NE/4 PRINCE FREDERICK 15' QUADRANGLE



Mapped, edited, and published by the Geological Survey
Control by USGS and USC&GS
Culture and drainage in part compiled from aerial photographs
taken 1953. Topography enlarged from 1:62,500 scale map of
Prince Frederick quadrangle, 15-minute series. Original map
by planetable surveys 1934-1935. Revised 1953
Hydrography from USC&GS chart 551, dated 1954
Polyconic projection. 1927 North American datum
10,000-foot grid based on Maryland coordinate system
1000-meter Universal Transverse Mercator grid ticks,
zone 18, shown in blue
Revisions shown in purple compiled from aerial
photographs taken 1970. This information not
field checked



ROAD CLASSIFICATION
Heavy-duty ——— Light-duty ———
Medium-duty ——— Unimproved dirt ———
U. S. Route ——— State Route ———

NORTH BEACH, MD.
NE/4 PRINCE FREDERICK 15' QUADRANGLE
N3837.5-W7630.7/5

1953
PHOTO REVISSED 1970
AMS 5661 II NE-SERIES V833

USGS
HISTORICAL FILE
TOPOGRAPHIC DIVISION

2795

SEP 7 1971