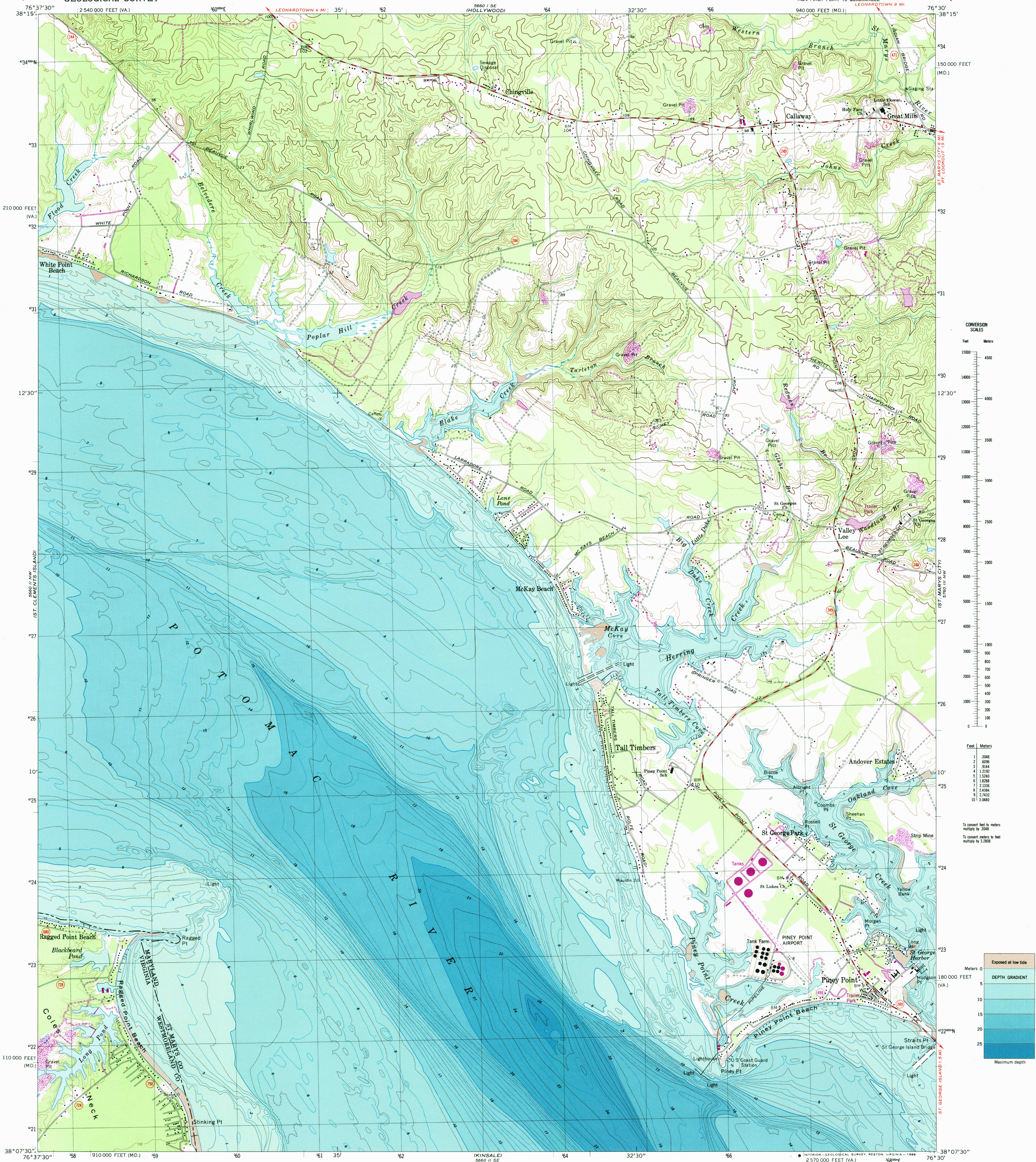


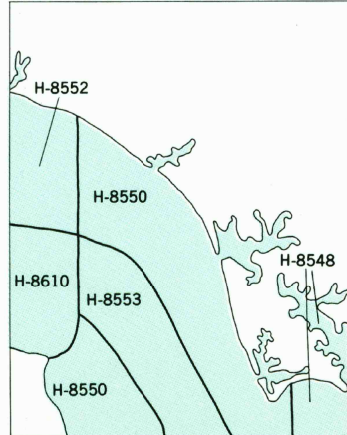
UNITED STATES  
DEPARTMENT OF THE INTERIOR  
GEOLOGICAL SURVEY

PINEY POINT QUADRANGLE  
MARYLAND-VIRGINIA  
7.5 MINUTE SERIES (TOPOGRAPHIC-BATHYMETRIC)



Mapped, edited, and published by the Geological Survey and the National Ocean Survey in cooperation with Commonwealth of Virginia agencies  
Control by USGS and NOS/NOAA  
Topography by photogrammetric methods from aerial photographs taken 1967. Field checked 1968  
Bathymetry compiled by the National Ocean Survey from tide-coordinated hydrographic surveys. This information is not intended for navigational purposes  
Mean low water (dotted) line and mean high water (heavy solid) line compiled by NOS from tide-coordinated photographs. Apparent shoreline (outer edge of vegetation) shown by light solid line  
Polyconic projection. 10,000-foot grid ticks based on Maryland coordinate system and Virginia coordinate system, north zone  
1000-meter Universal Transverse Mercator grid, zone 18  
1927 North American Datum  
To place on the predicted North American Datum 1983 move the projection lines 9 meters south and 28 meters west as shown by dashed corner ticks  
Revisions shown in purple compiled in cooperation with Commonwealth of Virginia agencies from aerial photographs taken 1978 and other sources. This information not field checked. Map edited 1980

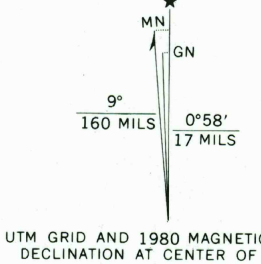
NATIONAL OCEAN SURVEY  
HYDROGRAPHIC SURVEY INDEX



Survey Number	Survey Date	Survey Scale	Survey Line Spacing (Naut. Miles)
H-8548	1960	1:10,000	02-07
H-8550	1960	1:10,000	01-08
H-8552	1960	1:10,000	02-07
H-8553	1960	1:20,000	03-20
H-8610	1960-61	1:10,000	02-07

SCALE 1:24,000  
1 0 1000 2000 3000 4000 5000 6000 7000 FEET  
1 0 5 10 KILOMETER  
CONTOUR INTERVAL 10 FEET  
DASHED LINES REPRESENT 5-FOOT CONTOURS  
NATIONAL GEODETIC VERTICAL DATUM OF 1929  
BATHYMETRIC CONTOUR INTERVAL 1 METER  
WITH SUPPLEMENTARY 0.5 METER CONTOURS  
DATUM IS MEAN LOW WATER  
THE RELATIONSHIP BETWEEN THE TWO DATUMS IS VARIABLE  
THE MEAN RANGE OF TIDE IS APPROXIMATELY 0.4 METER

BASE MAP COMPLIES WITH NATIONAL MAP ACCURACY STANDARDS  
BATHYMETRIC SURVEY DATA COMPLIES WITH INTERNATIONAL HYDROGRAPHIC ORGANIZATION (IHO) SPECIAL PUBLICATION 44 ACCURACY STANDARDS  
AND/OR STANDARDS USED AT THE DATE OF THE SURVEY  
FOR SALE BY U.S. GEOLOGICAL SURVEY, DENVER, COLORADO 80225 OR RESTON, VIRGINIA 22092  
NATIONAL OCEAN SERVICE, ROCKVILLE, MARYLAND 20852  
AND VIRGINIA DIVISION OF MINERAL RESOURCES, CHARLOTTESVILLE, VIRGINIA 22903  
A FOLDER DESCRIBING TOPOGRAPHIC MAPS AND SYMBOLS IS AVAILABLE ON REQUEST

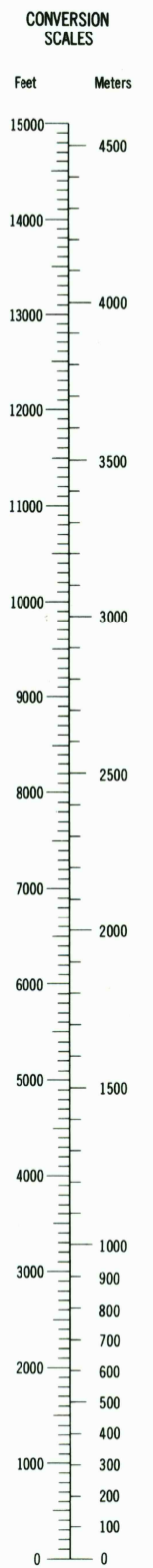


ROAD CLASSIFICATION  
Secondary highway, all weather, Light-duty road, all weather, hard surface  
Unimproved road, fair or dry weather  
State Route

PINEY POINT, MD.-VA.

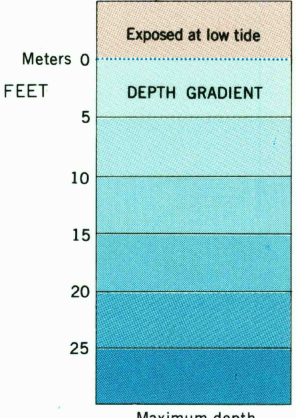
38076-B5-TF-024

1968  
PHOTOREVISED 1980  
BATHYMETRY ADDED 1982  
DMA 5660 II NE-SERIES V833



Feet	Meters
1	3048
2	6096
3	9144
4	12192
5	15240
6	18288
7	21336
8	24384
9	27432
10	30480

To convert feet to meters multiply by 3048  
To convert meters to feet multiply by 3.2808



RETURN TO:  
NATIONAL HISTORICAL MAP ARCHIVE