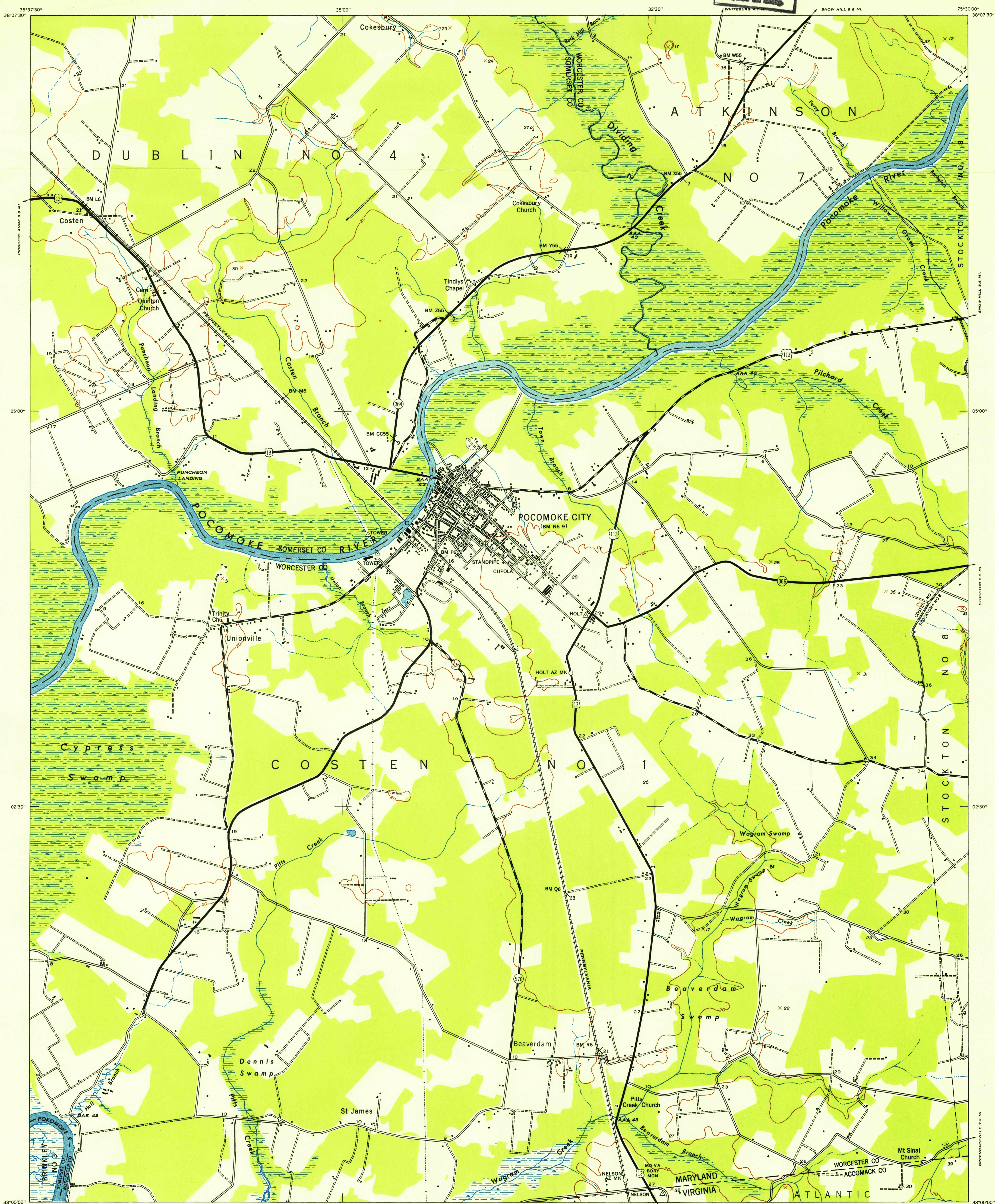


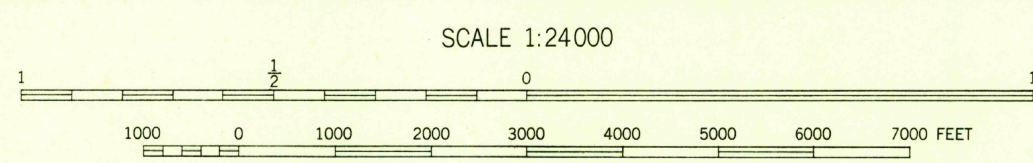
# POCOMOKE CITY

FILE COPY  
Inspection and Editing



Prepared under the direction of the Chief of Engineers by the Army Map Service (AMS), U. S. Army, Washington, D. C. Copied in 1946 from Maryland, 1:31,680, AMS, Sheet 5860 II SE, 1943. Original map compiled by USCGS: planimetry from aerial photography by photo-planimetric methods; topography by plane-table methods. Horizontal and vertical control by USCGS. Map field checked, 1943. Scale changed and marginal data revised, 1946. This map complies with the national standard map accuracy requirements.

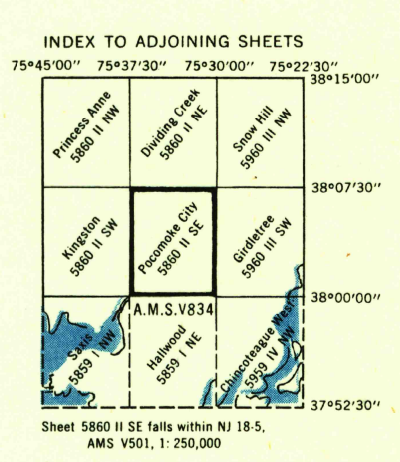
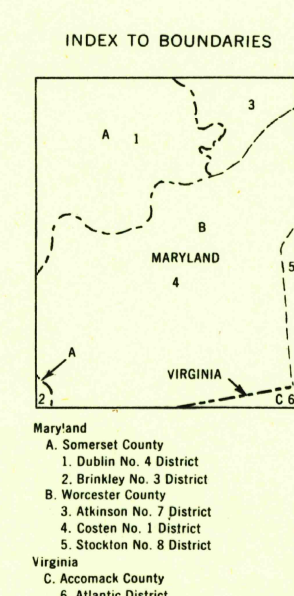
- LEGEND**  
ROAD DATA 1943
- |   |   |
|---|---|
| Hard surface, heavy duty road, more than two lanes wide                       | Loose surface, graded, dry-weather road |
| Hard surface, heavy duty road, two lanes wide; Federal route marker           | Trail; dirt road                        |
| Secondary, hard surface, all-weather road, two lanes wide; State route marker | Railroad in street; Overline in street  |
| <b>RAILROADS</b>  | <b>UNDER CONSTRUCTION</b>               |
| Standard gauge  | Single track Double track               |
| Narrow gauge  | Single track Double track               |
| Single track carline  | Double track carline                    |
| <b>BOUNDARIES</b>   | <b>ABANDONED</b>                        |
| International   | Single track Double track               |
| State   | Single track Double track               |
| County (with monument)  | Single track Double track               |
| County subdivision  | Single track Double track               |
| Reservation   | Double track carline                    |
| Military reservation  | Mine                                    |
| School; Church  | Triangulation station                   |
| Cemetery  | Bench mark                              |
| Churchyard  | Spot elevation                          |
|   | Woods                                   |
|   | Woods-brushwood                         |
|   | Brushwood                               |
|   | Orchard                                 |
|   | Viewpoint                               |
|   | Intermittent lake                       |
|   | Intermittent stream                     |
|   | Dam                                     |
|   | Rapids; Falls                           |
|   | Large rapids and falls                  |
|   | Swamp, marsh                            |
|   | Rocks awash at low tide                 |
|   | Wharf, pier                             |
|   | Man-made shoreline                      |



CONTOUR INTERVAL 20 FEET  
DATUM IS MEAN SEA LEVEL  
POLYCONIC PROJECTION  
1927 NORTH AMERICAN DATUM

REPRINTED FROM MILITARY EDITION FOR CIVIL USE  
FOR SALE BY U. S. GEOLOGICAL SURVEY, WASHINGTON 25, D. C.  
A FOLDER DESCRIBING TOPOGRAPHIC MAPS AND SYMBOLS IS AVAILABLE ON REQUEST

USGS  
Historical File  
Topographic Division



POCOMOKE CITY, MD., VA.  
N3800-W7530/7.5

FILE COPY  
Inspection and Editing

3210  
5-1953