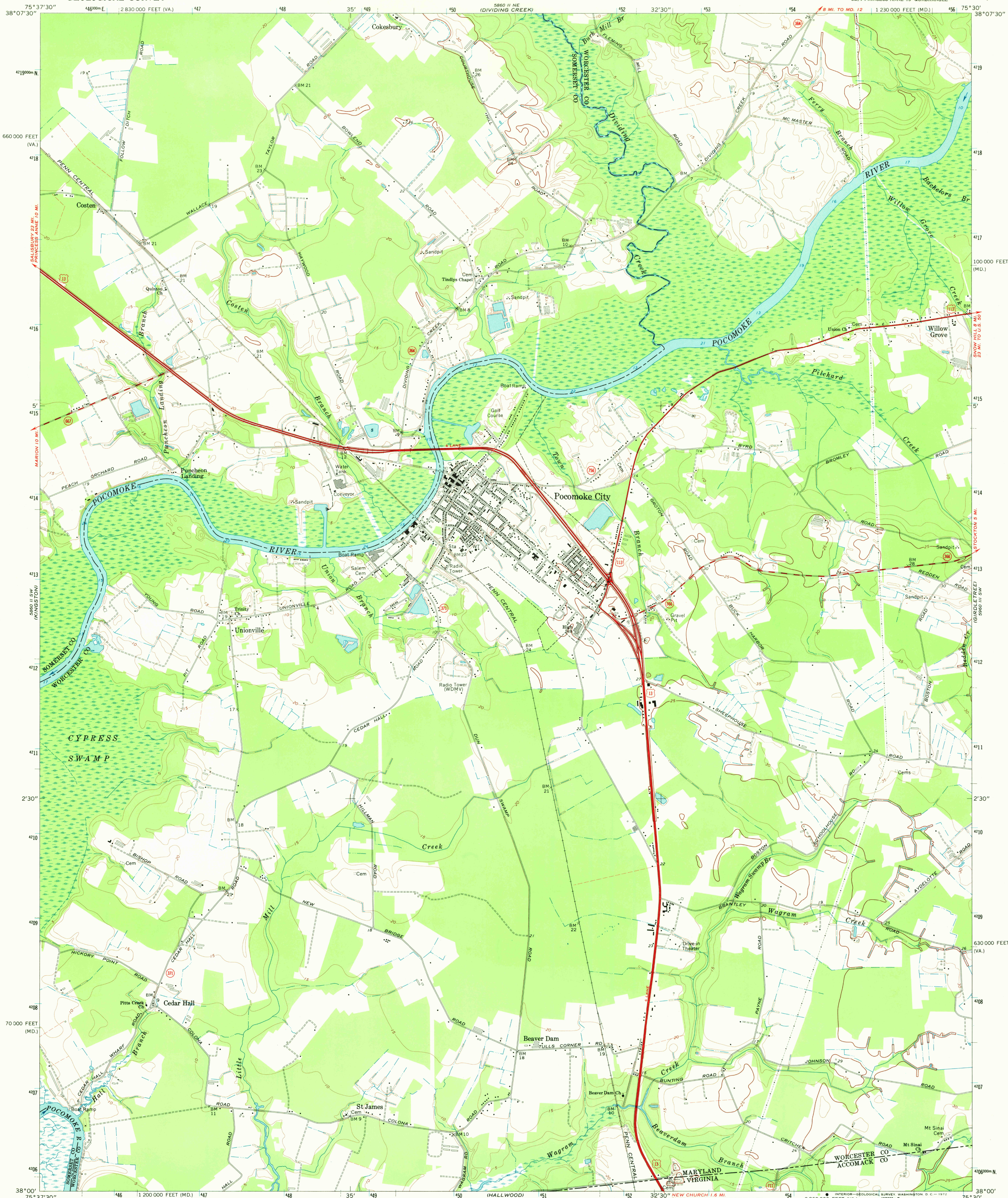


UNITED STATES
DEPARTMENT OF THE INTERIOR
GEOLOGICAL SURVEY

POCOMOKE CITY QUADRANGLE
MARYLAND—VIRGINIA
7.5 MINUTE SERIES (TOPOGRAPHIC)
SE/4 PRINCESS ANNE 15' QUADRANGLE



Mapped, edited, and published by the Geological Survey
in cooperation with Commonwealth of Virginia agencies

Control by USGS and USC&GS

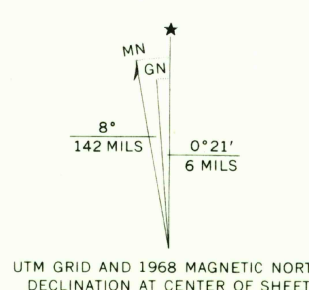
Topography by photogrammetric methods from aerial
photographs taken 1967. Field checked 1968
Supersedes Army Map Service map dated 1943

Selected hydrographic data compiled from USC&GS Chart 1224 (1970)

This information is not intended for navigational purposes

Polyconic projection. 1927 North American datum
10,000-foot grids based on Maryland coordinate system,
and Virginia coordinate system, south zone
1000-meter Universal Transverse Mercator grid ticks, zone 18, shown in blue

Fine red dashed lines indicate selected fence and field lines where
generally visible on aerial photographs. This information is unchecked
Short dashed blue lines indicate elliptical bay outlines
visible on aerial photographs



SCALE 1:24,000
1 000 0 1000 2000 3000 4000 5000 6000 7000 FEET
1 KILOMETER

CONTOUR INTERVAL 5 FEET
DATUM IS MEAN SEA LEVEL

DEPTH CURVES AND SOUNDINGS IN FEET—DATUM IS MEAN LOW WATER
SHORELINE SHOWN REPRESENTS THE APPROXIMATE LINE OF MEAN HIGH WATER
THE MEAN RANGE OF TIDE IS APPROXIMATELY 1.6 FEET

THIS MAP COMPLIES WITH NATIONAL MAP ACCURACY STANDARDS
FOR SALE BY U.S. GEOLOGICAL SURVEY, WASHINGTON, D. C. 20242
AND VIRGINIA DIVISION OF MINERAL RESOURCES, CHARLOTTESVILLE, VIRGINIA 22903
A FOLDER DESCRIBING TOPOGRAPHIC MAPS AND SYMBOLS IS AVAILABLE ON REQUEST



USGS
HISTORICAL FILE
TOPOGRAPHIC DIVISION

ROAD CLASSIFICATION
Primary highway, light-duty road, hard or improved surface
Secondary highway, hard surface
Unimproved road
Interstate Route
U. S. Route
State Route

POCOMOKE CITY, MD.—VA.
SE/4 PRINCESS ANNE 15' QUADRANGLE
N3800—W7530/7.5

1968

AMS 5860 II SE—SERIES V833

JUN 01 1972

3620