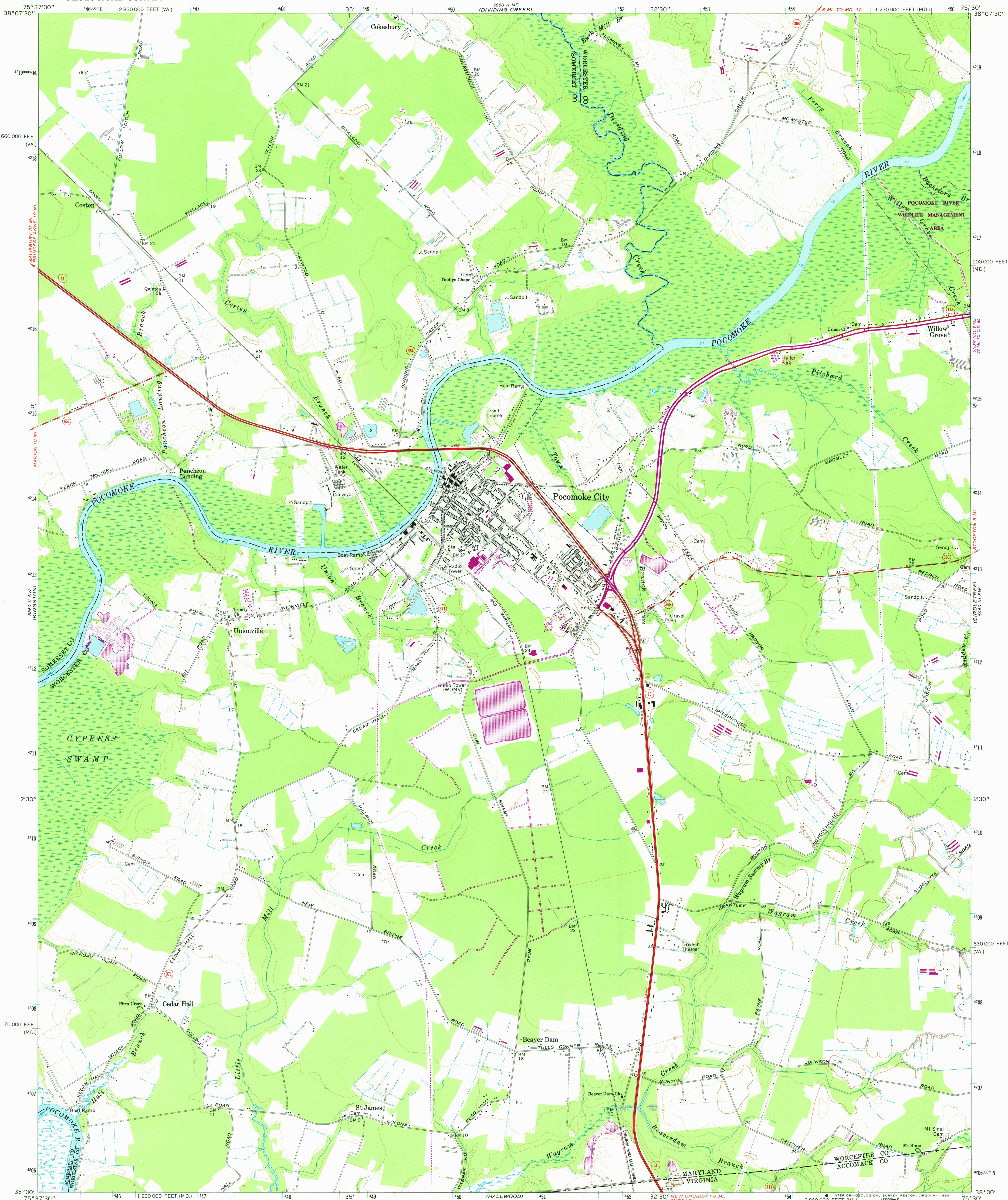
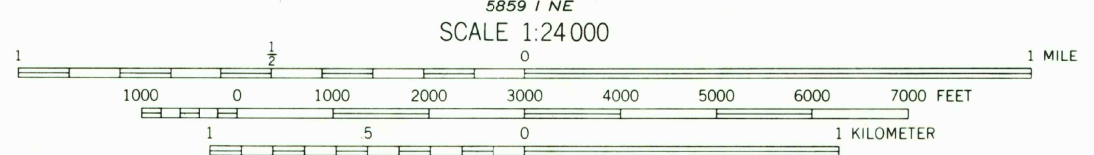
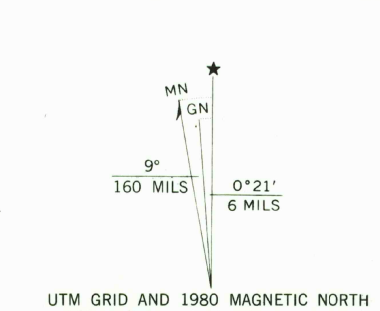


UNITED STATES
DEPARTMENT OF THE INTERIOR
GEOLOGICAL SURVEY

POCOMOKE CITY QUADRANGLE
MARYLAND-VIRGINIA
7.5 MINUTE SERIES (TOPOGRAPHIC)



Mapped, edited, and published by the Geological Survey in cooperation with Commonwealth of Virginia agencies
Control by USGS and NOS/NOAA
Topography by photogrammetric methods from aerial photographs taken 1967. Field checked 1968
Selected hydrographic data compiled from NOS chart 1224 (1970)
This information is not intended for navigational purposes
Polyconic projection, 10,000-foot grid based on Maryland coordinate system, and Virginia coordinate system, south zone 1000-meter Universal Transverse Mercator grid ticks, zone 18, shown in blue. 1927 North American Datum to place on the predicted North American Datum 1983 move the projection lines 8 meters south and 31 meters west as shown by dashed corner ticks
Fine red dashed lines indicate selected fence and field lines where generally visible on aerial photographs. This information not checked
Short dashed blue lines indicate elliptical bay outlines visible on aerial photographs
There may be private inholdings within the boundaries of the National of State reservations shown on this map



CONTOUR INTERVAL 5 FEET
NATIONAL GEODETIC DATUM OF 1929
DEPTH CURVES AND SOUNDINGS IN FEET-DATUM IS MEAN LOW WATER
THE RELATIONSHIP BETWEEN THE TWO DATUMS IS VARIABLE
SHORELINE SHOWN REPRESENTS THE APPROXIMATE LINE OF MEAN HIGH WATER
THE MEAN RANGE OF TIDE IS APPROXIMATELY 1.6 FEET
THIS MAP COMPLIES WITH NATIONAL MAP ACCURACY STANDARDS
FOR SALE BY U. S. GEOLOGICAL SURVEY, RESTON, VIRGINIA 22092
AND VIRGINIA DIVISION OF MINERAL RESOURCES, CHARLOTTESVILLE, VIRGINIA 22903
A FOLDER DESCRIBING TOPOGRAPHIC MAPS AND SYMBOLS IS AVAILABLE ON REQUEST



ROAD CLASSIFICATION

Primary highway, hard surface	Light-duty road, hard or improved surface
Secondary highway, hard surface	Unimproved road
Interstate Route	U. S. Route
	State Route

USGS
Historical File
Topographic Division
N3800-W7530/7.5
1968
PHOTOREVISED 1980
DMA 5860 II SE-SERIES V833

Revisions shown in purple compiled in cooperation with Commonwealth of Virginia agencies from aerial photographs taken 1978 and other source data. This information not field checked. Map edited 1980

POCOMOKE CITY, MD.-VA. SEP 23 1980

2250