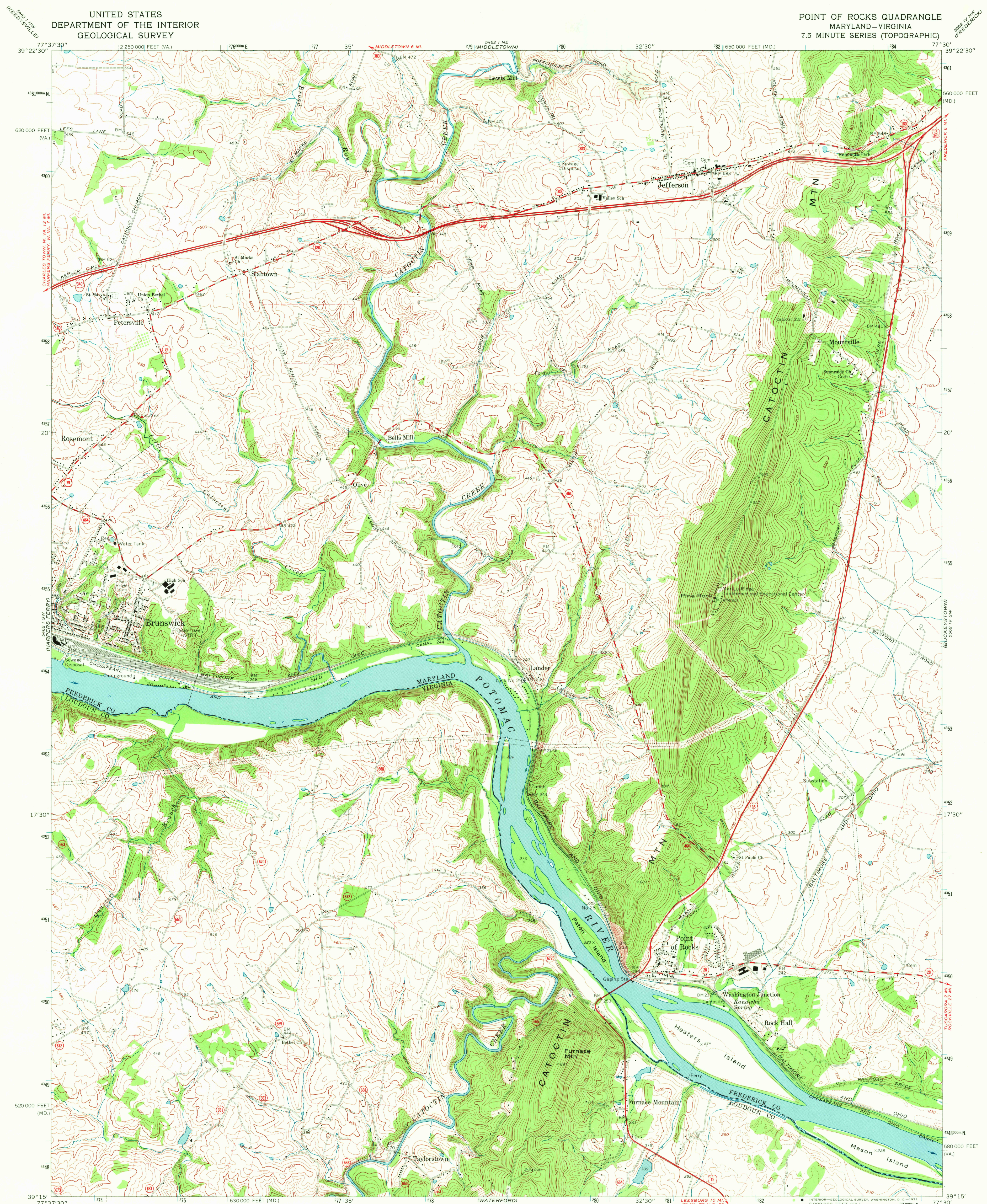
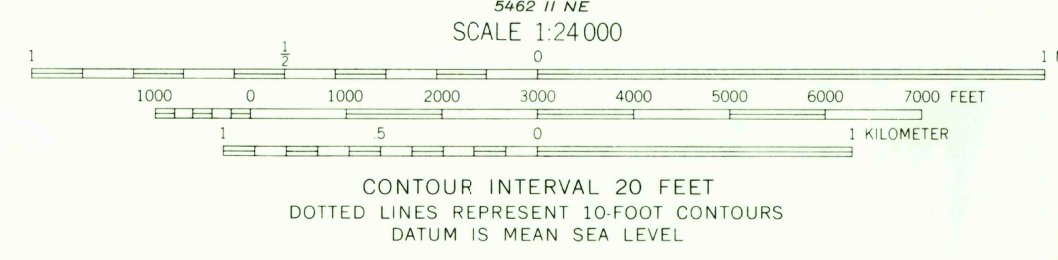
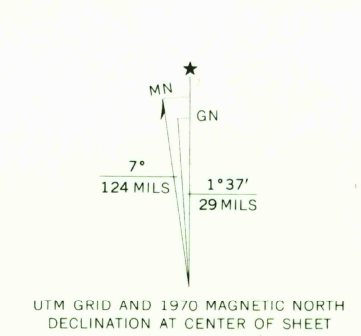


UNITED STATES  
DEPARTMENT OF THE INTERIOR  
GEOLOGICAL SURVEY

POINT OF ROCKS QUADRANGLE  
MARYLAND-VIRGINIA  
7.5 MINUTE SERIES (TOPOGRAPHIC)



Maped, edited, and published by the Geological Survey in cooperation with Commonwealth of Virginia agencies  
Control by USGS and USC&GS  
Topography by photogrammetric methods from aerial photographs taken 1965 and 1969. Field checked 1970  
Supersedes Army Map Service map dated 1955  
Polyconic projection. 1927 North American datum  
10,000-foot grids based on Maryland coordinate system, and Virginia coordinate system, north zone  
1000-meter Universal Transverse Mercator grid ticks, zone 18, shown in blue  
Fine red dashed lines indicate selected fence and field lines where generally visible on aerial photographs. This information is unchecked



CONTOUR INTERVAL 20 FEET  
DOTTED LINES REPRESENT 10-FOOT CONTOURS  
DATUM IS MEAN SEA LEVEL  
THIS MAP COMPLIES WITH NATIONAL MAP ACCURACY STANDARDS  
FOR SALE BY U.S. GEOLOGICAL SURVEY, WASHINGTON, D. C. 20242  
AND VIRGINIA DIVISION OF MINERAL RESOURCES, CHARLOTTESVILLE, VIRGINIA 22903  
A FOLDER DESCRIBING TOPOGRAPHIC MAPS AND SYMBOLS IS AVAILABLE ON REQUEST



ROAD CLASSIFICATION

Primary highway, hard surface	Light-duty road, hard or improved surface
Secondary highway, hard surface	Unimproved road
Interstate Route	U. S. Route
	State Route

POINT OF ROCKS, MD. - VA.  
N3915-W7730/7.5  
1970  
AMS 5462 I SE-SERIES V831

JUL 19 1972  
7490