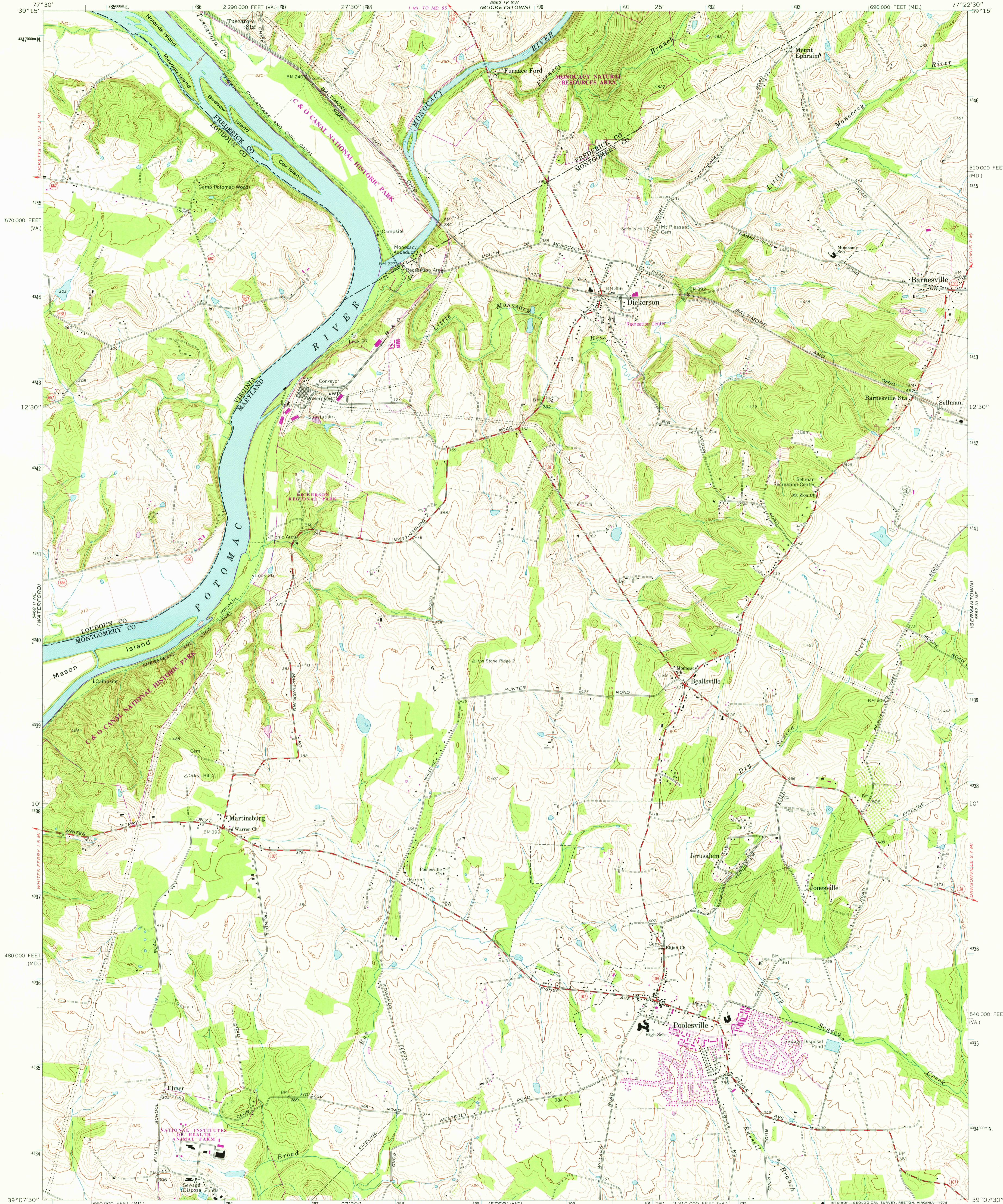


UNITED STATES
DEPARTMENT OF THE INTERIOR
GEOLOGICAL SURVEY

POOLESVILLE QUADRANGLE
MARYLAND-VIRGINIA
7.5 MINUTE SERIES (TOPOGRAPHIC)



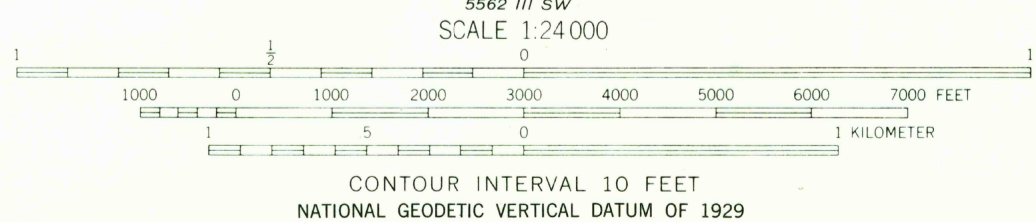
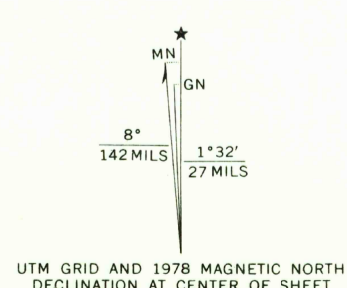
Mapped, edited, and published by the Geological Survey
in cooperation with Commonwealth of Virginia agencies
Control by USGS and USC&GS

Topography by photogrammetric methods from aerial
photographs taken 1965 and 1969. Field checked 1970
Supersedes Army Map Service map dated 1952

Polycyclic projection. 1927 North American datum
10,000-foot grids based on Maryland coordinate system,
and Virginia coordinate system, north zone.
1000-meter Universal Transverse Mercator grid ticks,
zone 18, shown in blue

Fine red dashed lines indicate selected fence and field lines where
generally visible on aerial photographs. This information is unchecked

There may be private inholdings within the boundaries of
the National or State reservations shown on this map



THIS MAP COMPLIES WITH NATIONAL MAP ACCURACY STANDARDS
FOR SALE BY U. S. GEOLOGICAL SURVEY, RESTON, VIRGINIA 22092
AND VIRGINIA DIVISION OF MINERAL RESOURCES, CHARLOTTESVILLE, VIRGINIA 22903
A FOLDER DESCRIBING TOPOGRAPHIC MAPS AND SYMBOLS IS AVAILABLE ON REQUEST



ROAD CLASSIFICATION	
Primary highway, hard surface	Light-duty road, hard or improved surface
Secondary highway, hard surface	Unimproved road
Interstate Route	U. S. Route
	State Route

USGS
Historical File
Topographic Division

POOLESVILLE, MD. - VA.

N3907.5—W7722.5/7.5

1970
PHOTOREVISED 1978
AMS 5562 III NW—SERIES V833

MAR 16 1979

3300