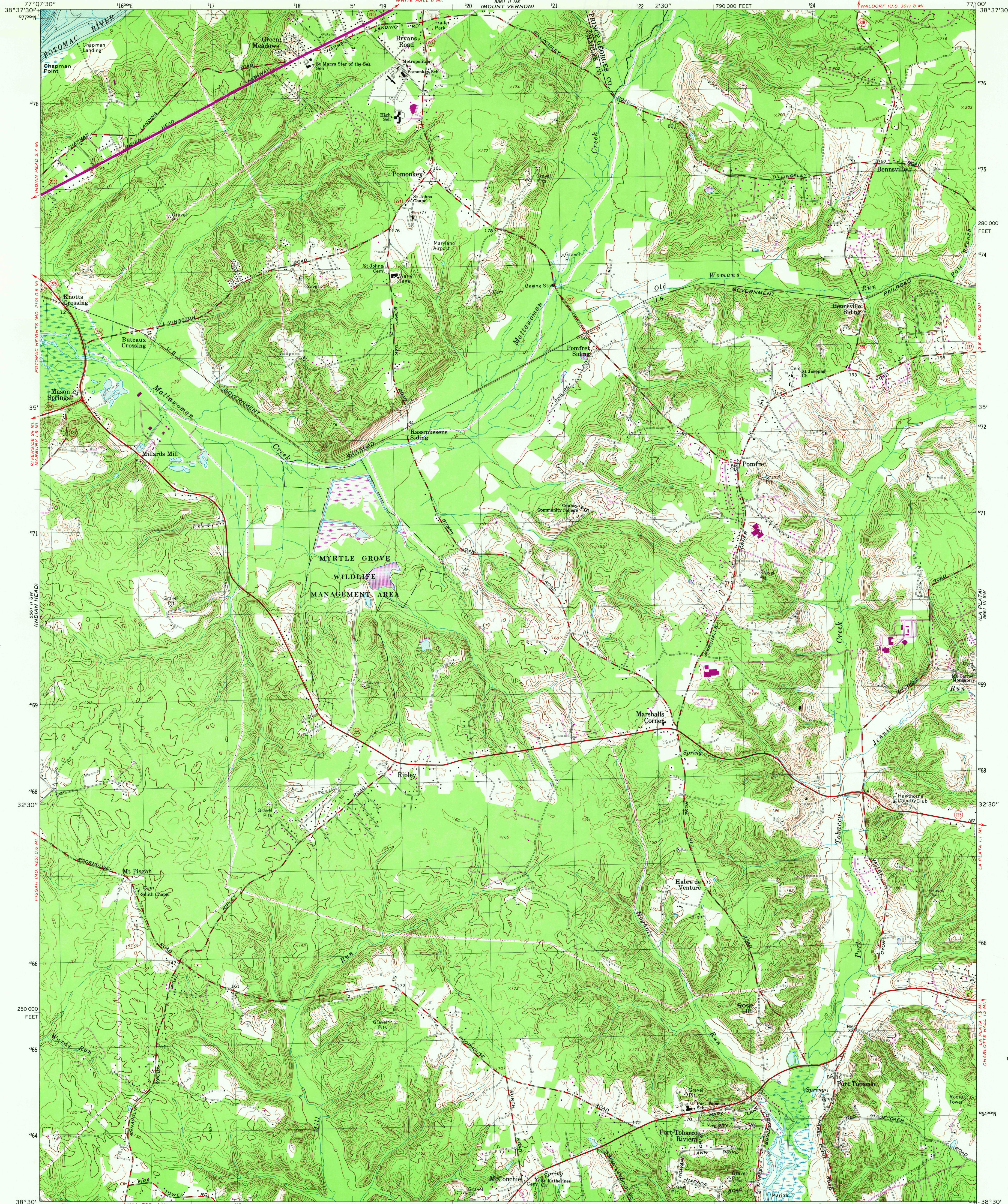


UNITED STATES
DEPARTMENT OF THE INTERIOR
GEOLOGICAL SURVEY

PORT TOBACCO QUADRANGLE
MARYLAND
7.5 MINUTE SERIES (TOPOGRAPHIC-BATHYMETRIC)
SE/4 INDIAN HEAD 15' QUADRANGLE

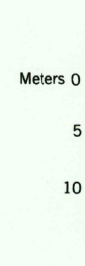


CONVERSION
SCALES



| Feet | Meters |
|------|--------|
| 1 | 3048 |
| 2 | 6096 |
| 3 | 9144 |
| 4 | 12192 |
| 5 | 15240 |
| 6 | 18288 |
| 7 | 21336 |
| 8 | 24384 |
| 9 | 27432 |
| 10 | 30480 |

To convert feet to meters
multiply by .3048
To convert meters to feet
multiply by 3.2808



Maped by the Defense Mapping Agency
Edited and published by the Geological Survey
and the National Ocean Survey
Control by USGS, NOS/NOAA, and USCE
Topography by photogrammetric methods from aerial
photographs taken 1955. Field checked 1956. Revised by
Geological Survey 1966
Bathymetry compiled by the National Ocean Survey from
tide-coordinated hydrographic surveys. This information is not
intended for navigational purposes
Mean low water (dotted) line and mean high water (heavy
solid) line compiled by NOS from tide-coordinated photographs
Apparent shoreline (outer edge of vegetation) shown by light
solid line
Polyconic projection. 10,000-foot grid ticks based on Maryland
coordinate system
1000-meter Universal Transverse Mercator grid, zone 18
1927 North American Datum
To place on the predicted North American Datum 1983
move the projection lines 9 meters south and 26 meters
west as shown by dashed corner ticks
Fine red dashed lines indicate selected fence and field lines
where generally visible on aerial photographs. This information
is unchecked
There may be private inholdings within the boundaries of the
National or State reservations shown on this map
Revisions shown in purple compiled by the Geological Survey
from aerial photographs taken 1976 and other sources
This information not field checked. Map edited 1978

| HYDROGRAPHIC SURVEY INFORMATION | | | |
|------------------------------------|----------------|-----------------|-----------------------------------------|
| Survey Number | Survey Date | Survey Scale | Survey Line Spacing (Naut. Miles) |
| H-9349 | 1973 | 1:10,000 | .01-.05 |

SCALE 1:24,000
1 1000 0 1000 2000 3000 4000 5000 6000 7000 FEET
1 5 10 15 20 25 KILOMETER
CONTOUR INTERVAL 10 FEET
NATIONAL GEODETIC VERTICAL DATUM OF 1929
BATHYMETRIC CONTOUR INTERVAL 1 METER WITH SUPPLEMENTARY
0.5 METER CONTOURS-DATUM IS MEAN LOW WATER
THE RELATIONSHIP BETWEEN THE TWO DATUMS IS VARIABLE
THE MEAN RANGE OF TIDE IS APPROXIMATELY 0.6 METER
BASE MAP COMPLIES WITH NATIONAL MAP ACCURACY STANDARDS
BATHYMETRIC SURVEY DATA COMPLIES WITH INTERNATIONAL HYDROGRAPHIC
ORGANIZATION (IHO) SPECIAL PUBLICATION 44 ACCURACY STANDARDS
AND/OR STANDARDS USED AT THE DATE OF THE SURVEY
FOR SALE BY U. S. GEOLOGICAL SURVEY, RESTON, VIRGINIA 22092
AND NATIONAL OCEAN SURVEY, ROCKVILLE, MARYLAND 20852
A FOLDER DESCRIBING TOPOGRAPHIC MAPS AND SYMBOLS IS AVAILABLE ON REQUEST

ROAD CLASSIFICATION
Heavy-duty ——— Light-duty ———
Medium-duty ——— Unimproved dirt ———
State Route ———
PORT TOBACCO, MD.
SE/4 INDIAN HEAD 15' QUADRANGLE
N3830—W7700/7.5
1966
PHOTOREVISED 1978
BATHYMETRY ADDED 1982
DMA 5561 II SE-SERIES V833
QUADRANGLE LOCATION
UTM GRID AND 1978 MAGNETIC NORTH
DECLINATION AT CENTER OF SHEET

AUG 22 1982
RETURN TO:
NOS HISTORICAL MAP ARCHIVES
U.S. NATIONAL CENTER, MS-322
RESTON, VA 22092
USGS NHD HISTORICAL MAP