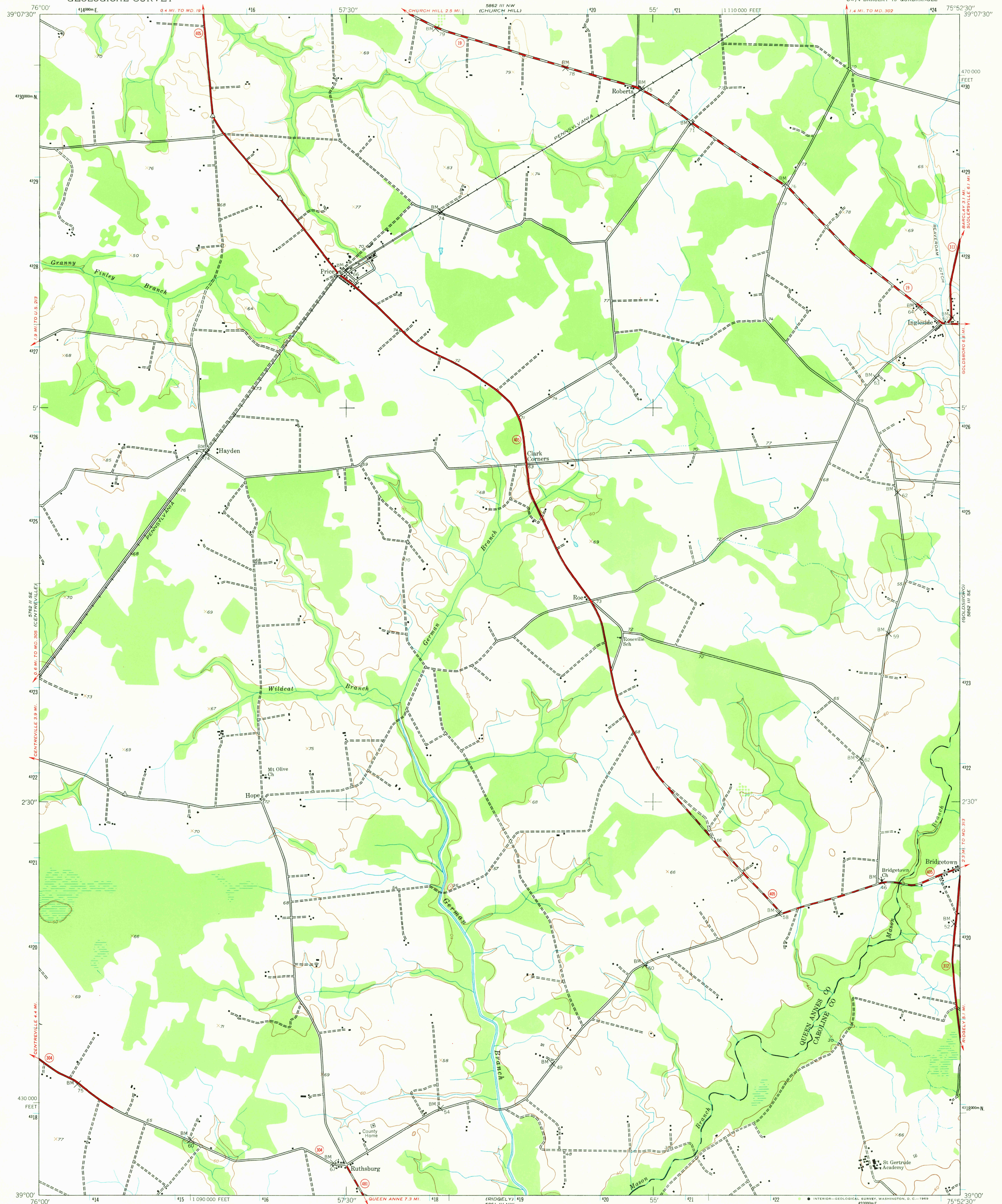


UNITED STATES
DEPARTMENT OF THE INTERIOR
GEOLOGICAL SURVEY

PRICE QUADRANGLE
MARYLAND
7.5 MINUTE SERIES (TOPOGRAPHIC)
SW/4 BARCLAY 15' QUADRANGLE

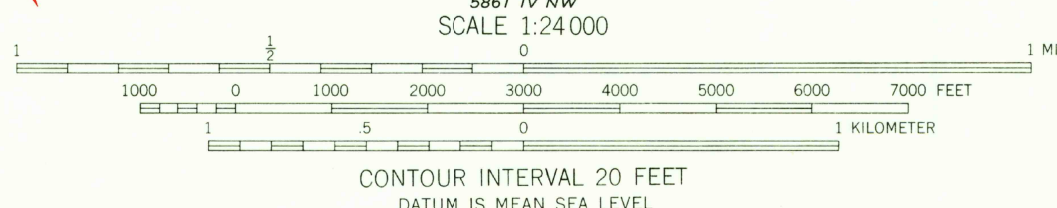
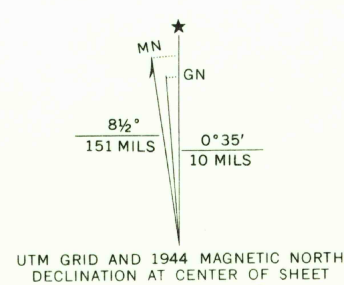


Mapped by the Army Map Service
Published for civil use by the Geological Survey

Control by USGS and USC&GS

Topography from aerial photographs by photogrammetric methods
and by planetable surveys 1944. Aerial photographs taken 1942

Polyconic projection. 1927 North American datum
10,000-foot grid based on Maryland coordinate system
1000-meter Universal Transverse Mercator grid ticks,
zone 18, shown in blue



USGS
Historical File
Topographic Division



QUADRANGLE LOCATION

U.S.G.S.
FILE COPY
TOPOGRAPHIC DIVISION

ROAD CLASSIFICATION
Heavy-duty ——— Light-duty ———
Medium-duty - - - - - Unimproved dirt - - - - -
State Route (O) State Route

PRICE, MD.
SW/4 BARCLAY 15' QUADRANGLE
N3900-W7552.5/7.5

1944

AMS 5862 III SW-SERIES V833

THIS MAP COMPLIES WITH NATIONAL MAP ACCURACY STANDARDS
FOR SALE BY U.S. GEOLOGICAL SURVEY, WASHINGTON, D. C. 20242
A FOLDER DESCRIBING TOPOGRAPHIC MAPS AND SYMBOLS IS AVAILABLE ON REQUEST

3170

JUN 26 1968