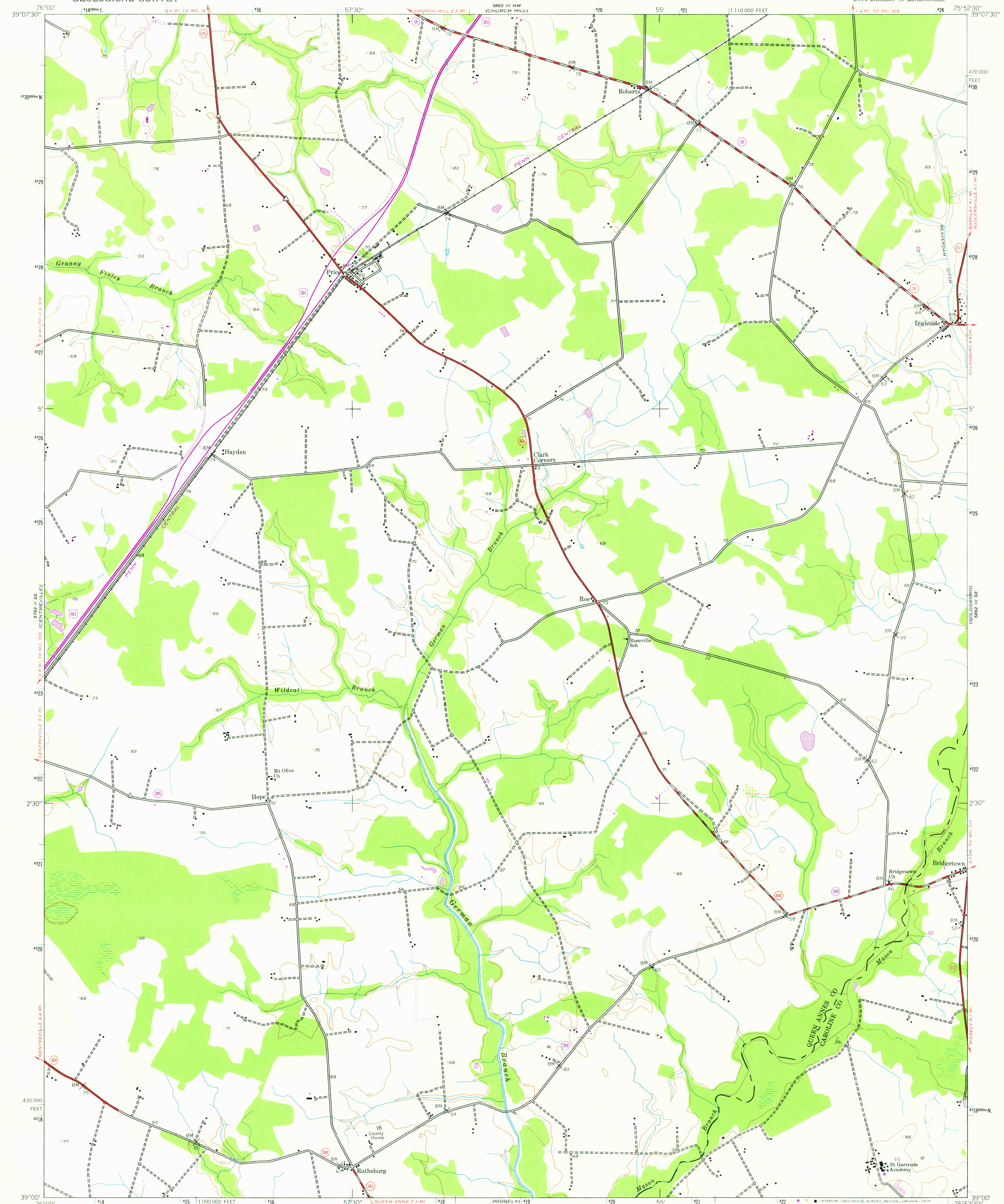


UNITED STATES  
DEPARTMENT OF THE INTERIOR  
GEOLOGICAL SURVEY

PRICE QUADRANGLE  
MARYLAND  
7.5 MINUTE SERIES (TOPOGRAPHIC)  
SW/4 BARCLAY 15' QUADRANGLE



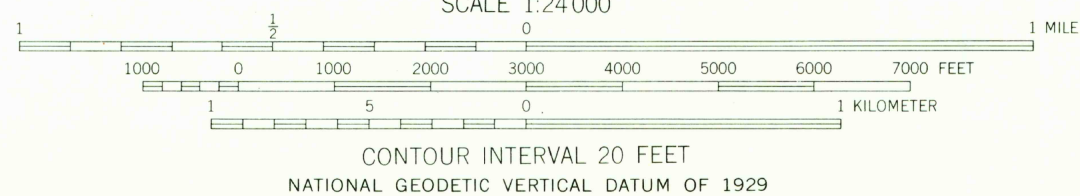
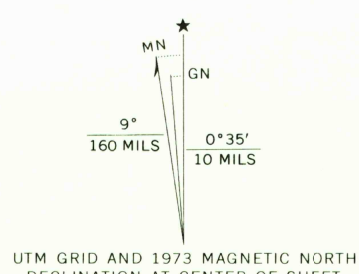
Mapped by the Army Map Service  
Published for civil use by the Geological Survey

Control by USGS and USC&GS

Topography from aerial photographs by photogrammetric methods  
and by planetable surveys 1944. Aerial photographs taken 1942

Polycyclic projection. 1927 North American datum  
10,000-foot grid based on Maryland coordinate system  
1000-meter Universal Transverse Mercator grid ticks,  
zone 18, shown in blue

Revisions shown in purple compiled by the Geological Survey from  
aerial photographs taken 1973. This information not field checked



CONTOUR INTERVAL 20 FEET  
NATIONAL GEODETIC VERTICAL DATUM OF 1929

THIS MAP COMPLIES WITH NATIONAL MAP ACCURACY STANDARDS  
FOR SALE BY U. S. GEOLOGICAL SURVEY, RESTON, VIRGINIA 22092  
A FOLDER DESCRIBING TOPOGRAPHIC MAPS AND SYMBOLS IS AVAILABLE ON REQUEST



ROAD CLASSIFICATION  
Heavy-duty ——— Light-duty ———  
Medium-duty ——— Unimproved dirt ———  
U. S. Route ——— State Route ———

USGS  
Historical File  
Topographic Division

PRICE, MD.  
SW/4 BARCLAY 15' QUADRANGLE  
N 3900—W 7552.5/7.5

1944  
PHOTOREVISED 1973  
AMS 5862 III SW—SERIES V833

AUG 27 1976