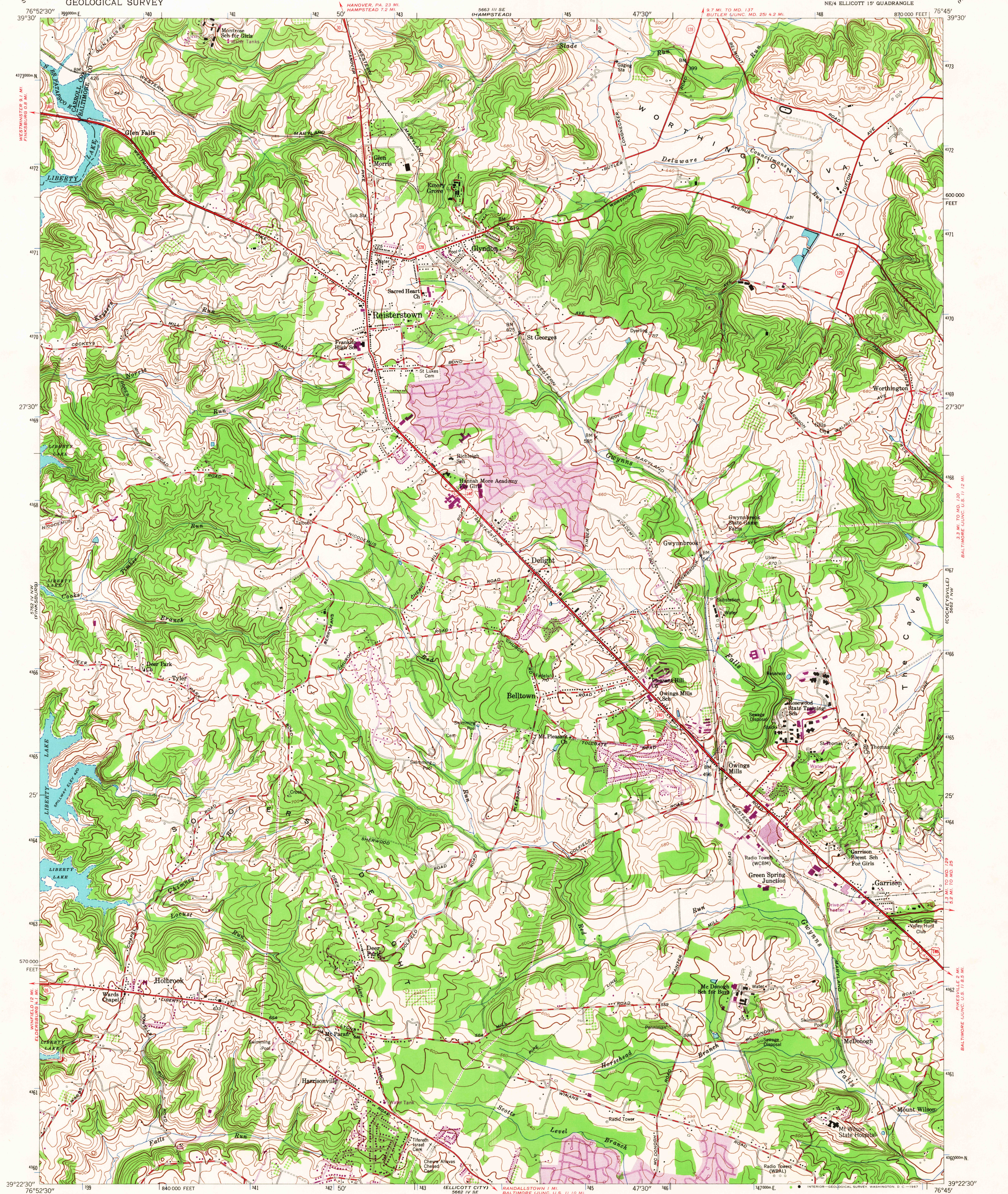


UNITED STATES
DEPARTMENT OF THE INTERIOR
GEOLOGICAL SURVEY

REISTERSTOWN QUADRANGLE
MARYLAND
7.5 MINUTE SERIES (TOPOGRAPHIC)
NE/4 ELLICOTT 15' QUADRANGLE



Maped by the Army Map Service
Edited and published by the Geological Survey

Control by USGS and USC&GS

Topography from aerial photographs by stereophotogrammetric
methods. Aerial photographs taken 1943. Field check 1944
Culture revised by the Geological Survey 1953

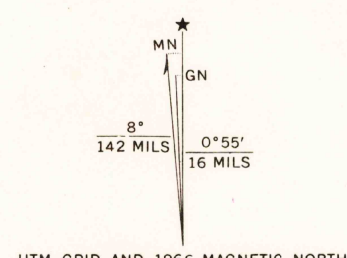
Polycyclic projection. 1927 North American datum
10,000-foot grid based on Maryland coordinate system

Unchecked elevations are shown in brown

1000-meter Universal Transverse Mercator grid ticks,
zone 18, shown in blue

Revisions shown in purple compiled by the Geological Survey from
aerial photographs taken 1966. This information not field checked

Purple tint indicates urban areas



CONTOUR INTERVAL 20 FEET
DATUM IS MEAN SEA LEVEL

THIS MAP COMPLIES WITH NATIONAL MAP ACCURACY STANDARDS
FOR SALE BY U. S. GEOLOGICAL SURVEY, WASHINGTON, D. C. 20242
A FOLDER DESCRIBING TOPOGRAPHIC MAPS AND SYMBOLS IS AVAILABLE ON REQUEST

Historical File
Topographic Division

U.S.G.S.
FILE COPY
TOPOGRAPHIC DIVISION

ROAD CLASSIFICATION
Heavy-duty ——— Light-duty ———
Medium-duty ——— Unimproved dirt ———
U. S. Route ——— State Route ———

REISTERSTOWN, MD.
NE/4 ELLICOTT 15' QUADRANGLE
N 3922.5—W 7645/7.5
1953
PHOTOREVISED 1966
AMS 5662 IV NW—SERIES V833

4345
NOV 1 1967