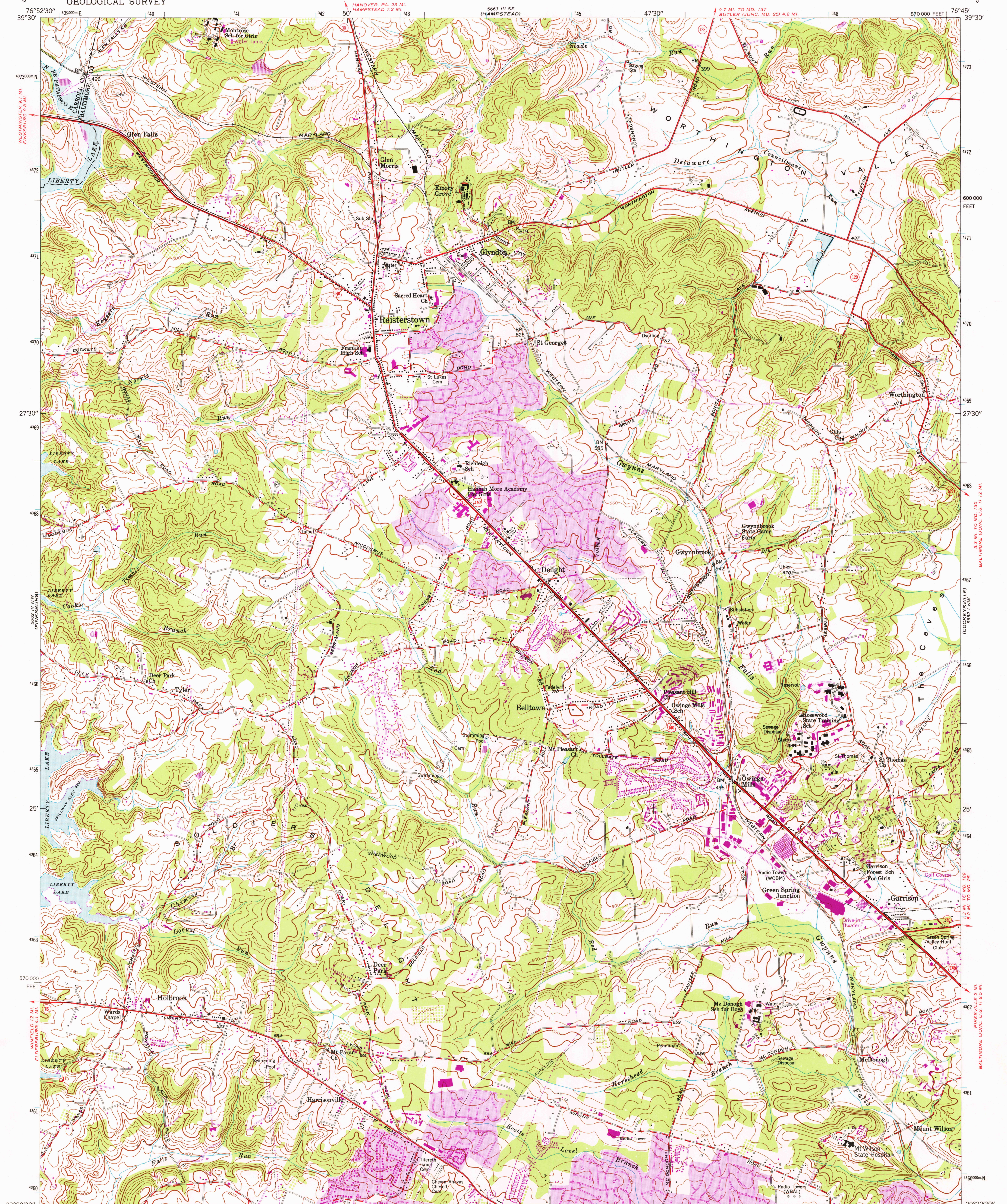


UNITED STATES
DEPARTMENT OF THE INTERIOR
GEOLOGICAL SURVEY

REISTERSTOWN QUADRANGLE
MARYLAND
7.5 MINUTE SERIES (TOPOGRAPHIC)



Mapped by the Army Map Service
Edited and published by the Geological Survey

Control by USGS and USC&GS

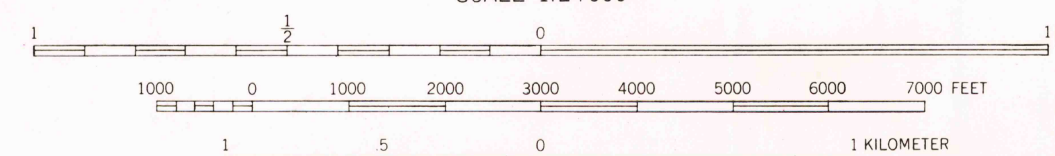
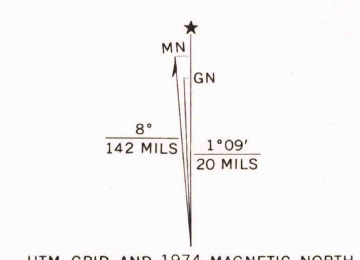
Topography from aerial photographs by stereophotogrammetric methods. Aerial photographs taken 1943. Field check 1944
Culture revised by the Geological Survey 1953

Polyconic projection. 1927 North American datum
10,000-foot grid based on Maryland coordinate system

Unchecked elevations are shown in brown

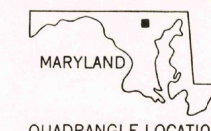
1000-meter Universal Transverse Mercator grid ticks, zone 18, shown in blue

Revisions shown in purple compiled by the Geological Survey from aerial photographs taken 1966 and 1974. This information not field checked
Purple tint indicates extension of urban areas



CONTOUR INTERVAL 20 FEET
NATIONAL GEODETIC VERTICAL DATUM OF 1929

THIS MAP COMPLIES WITH NATIONAL MAP ACCURACY STANDARDS
FOR SALE BY U. S. GEOLOGICAL SURVEY, RESTON, VIRGINIA 22092
A FOLDER DESCRIBING TOPOGRAPHIC MAPS AND SYMBOLS IS AVAILABLE ON REQUEST



ROAD CLASSIFICATION
Heavy-duty ——— Light-duty ———
Medium-duty ——— Unimproved dirt ———
U.S. Route ——— State Route ———

REISTERSTOWN, MD.

USGS
Historical File
Topographic Division

N 3922.5—W 7645/7.5
1953
PHOTOREVISED 1966 AND 1974
AMS 5662 IV NE—SERIES V833

MAR 30 1976