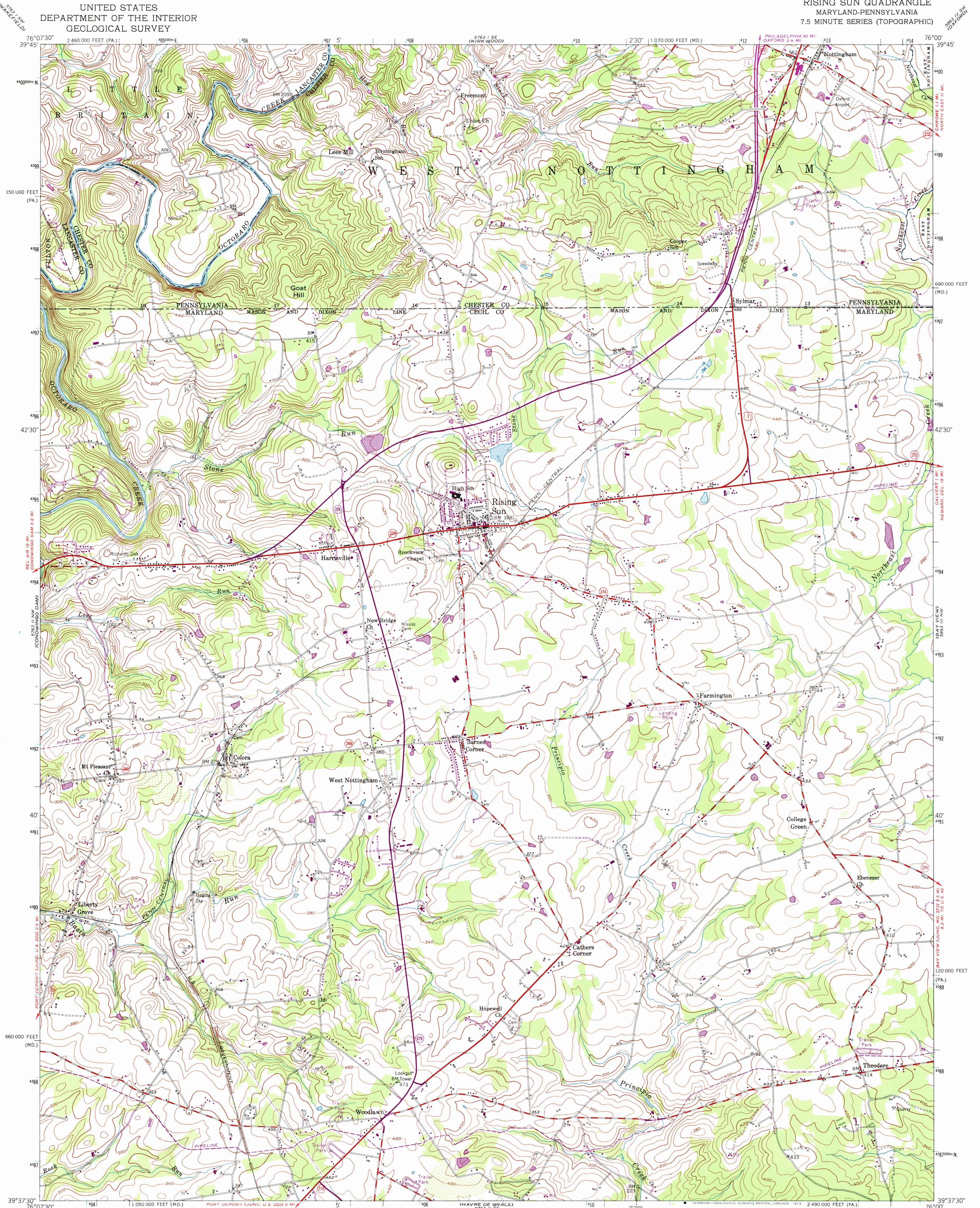
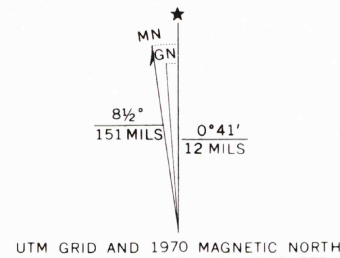


UNITED STATES
DEPARTMENT OF THE INTERIOR
GEOLOGICAL SURVEY

RISE SUN QUADRANGLE
MARYLAND-PENNSYLVANIA
7.5 MINUTE SERIES (TOPOGRAPHIC)



Mapped, edited, and published by the Geological Survey
Control by USGS and USC&GS
Culture and drainage in part compiled from aerial photographs taken 1952. Topography by plane-table surveys 1939 and 1940
Revised 1953
Polyconic projection. 1927 North American datum
10,000-foot grids based on Maryland coordinate system, and Pennsylvania coordinate system, south zone
1000-meter Universal Transverse Mercator grid ticks, zone 18, shown in blue
Revisions shown in purple compiled from aerial photographs taken 1970. This information not field checked



SCALE 1:24,000
1 000 0 1000 2000 3000 4000 5000 6000 7000 FEET
1 KILOMETER
CONTOUR INTERVAL 20 FEET
DATUM IS MEAN SEA LEVEL
THIS MAP COMPLIES WITH NATIONAL MAP ACCURACY STANDARDS
FOR SALE BY U. S. GEOLOGICAL SURVEY, RESTON, VIRGINIA 22092
A FOLDER DESCRIBING TOPOGRAPHIC MAPS AND SYMBOLS IS AVAILABLE ON REQUEST



ROAD CLASSIFICATION
Heavy-duty 4 LANE 1 LANE Light-duty
Medium-duty 4 LANE 1 LANE Unimproved dirt
U. S. Route State Route

RISE SUN, MD.-PA.
N3937.5-W7600/7.5
1953
PHOTOREVISED 1970
AMS 5763 II NE-SERIES V833

FEB 13 1974