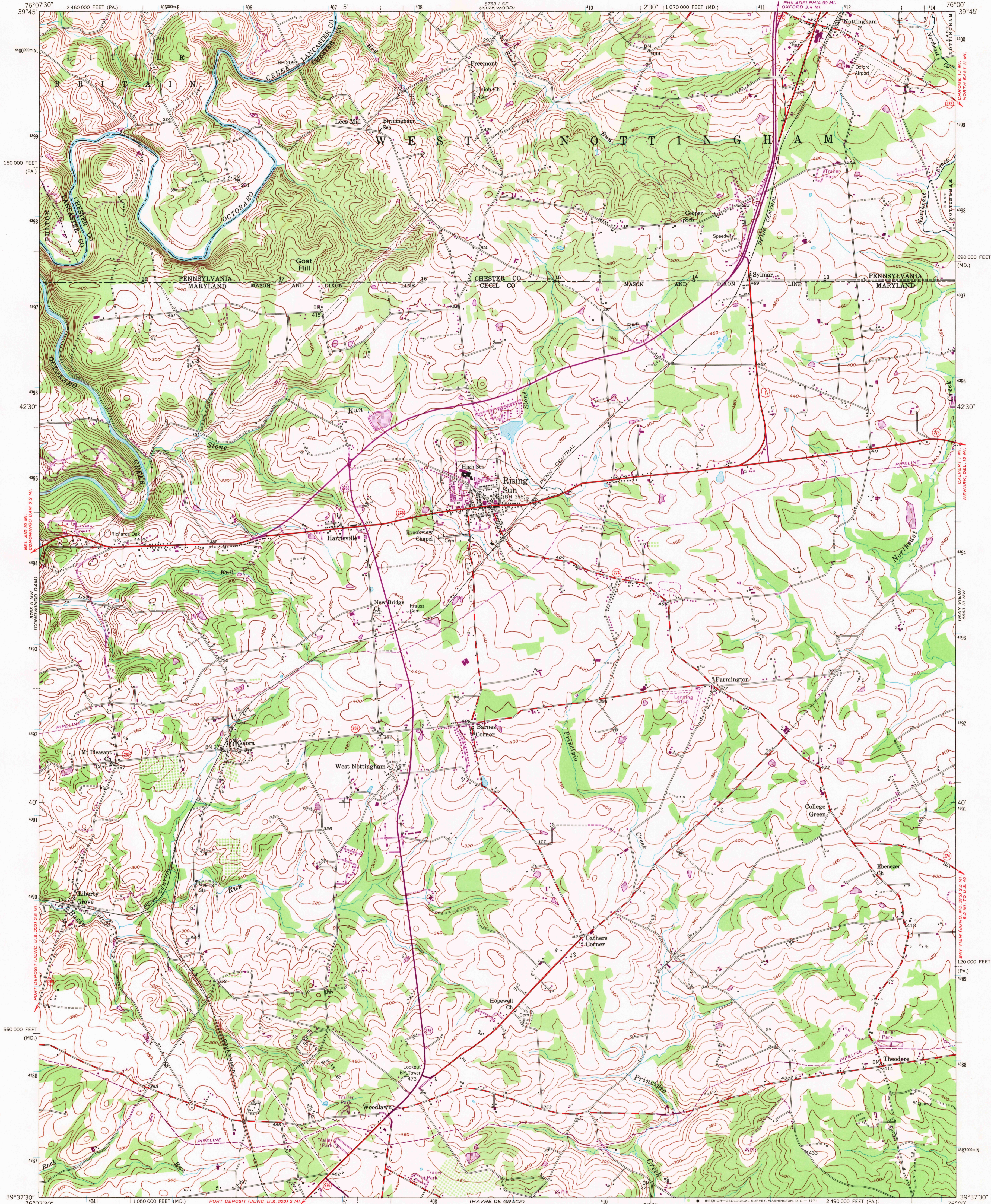
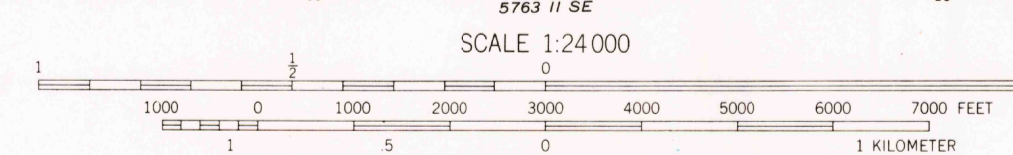
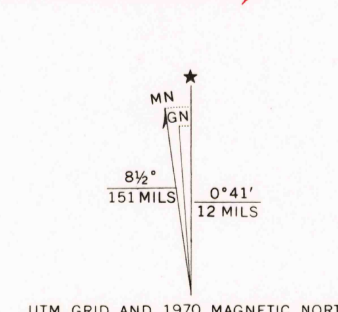


UNITED STATES  
DEPARTMENT OF THE INTERIOR  
GEOLOGICAL SURVEY

RISING SUN QUADRANGLE  
MARYLAND-PENNSYLVANIA  
7.5 MINUTE SERIES (TOPOGRAPHIC)  
NE/4 HAVRE DE GRACE 15' QUADRANGLE



Mapped, edited, and published by the Geological Survey  
Control by USGS and USC&GS  
Culture and drainage in part compiled from aerial photographs taken 1952. Topography by plane-table surveys 1939 and 1940 Revised 1953  
Polyconic projection. 1927 North American datum 10,000-foot grids based on Maryland coordinate system, and Pennsylvania coordinate system, south zone 1000-meter Universal Transverse Mercator grid ticks, zone 18, shown in blue  
Revisions shown in purple compiled from aerial photographs taken 1970. This information not field checked



CONTOUR INTERVAL 20 FEET  
DATUM IS MEAN SEA LEVEL

THIS MAP COMPLIES WITH NATIONAL MAP ACCURACY STANDARDS  
FOR SALE BY U. S. GEOLOGICAL SURVEY, WASHINGTON, D. C. 20242  
A FOLDER DESCRIBING TOPOGRAPHIC MAPS AND SYMBOLS IS AVAILABLE ON REQUEST

ROAD CLASSIFICATION

Heavy-duty	4 LANE 16 LANE	Light-duty
Medium-duty	4 LANE 16 LANE	Unimproved dirt
U. S. Route		State Route



USGS  
HISTORICAL FILE  
TOPOGRAPHIC DIVISION

RISING SUN, MD.-PA.  
NE/4 HAVRE DE GRACE 15' QUADRANGLE  
N3937.5-W7600/7.5  
1953  
PHOTOREVISED 1970  
AMS 5763 II NE-SERIES V833