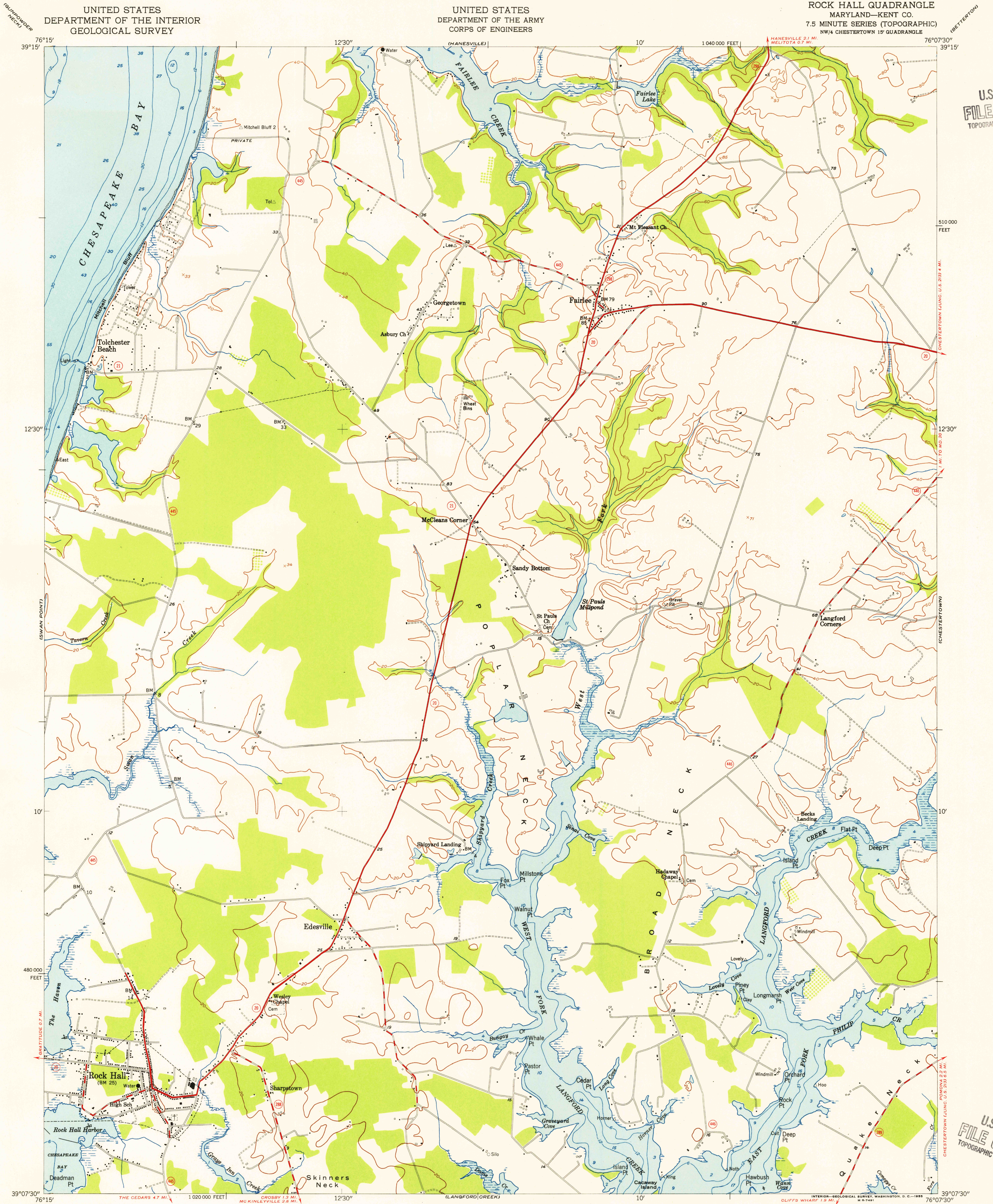


U.S.G.S.
FILE COPY
TOPOGRAPHIC DIVISION

U.S.G.S.
FILE COPY
TOPOGRAPHIC DIVISION



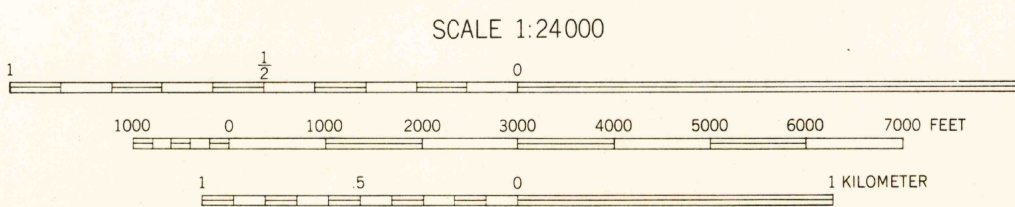
Mapped by the Army Map Service
Edited and published by the Geological Survey

Control by USGS, USCGS, and USCE

Culture and drainage in part compiled from aerial
photographs. Topography by plane-table surveys
Culture revised by the Geological Survey 1953
Hydrography from USCGS charts 548 and 549,
dated 1944

Polyconic projection. 1927 North American datum
10,000-foot grid based on Maryland coordinate system

TRUE NORTH
MAGNETIC NORTH
APPROXIMATE MEAN
DECLINATION, 1953



SCALE 1:24,000

CONTOUR INTERVAL 20 FEET
DATUM IS MEAN SEA LEVEL
DEPTH CURVES AND SOUNDINGS IN FEET—DATUM IS MEAN LOW WATER
SHORELINE SHOWN REPRESENTS THE APPROXIMATE LINE OF MEAN HIGH WATER
THE MEAN RANGE OF TIDE IS 1.5 FEET IN THE CHESAPEAKE BAY
AND 1.2 FEET IN LANGFORD CREEK
THIS MAP COMPLIES WITH NATIONAL MAP ACCURACY STANDARDS

FOR SALE BY U.S. GEOLOGICAL SURVEY, WASHINGTON 25, D.C.
A FOLDER DESCRIBING TOPOGRAPHIC MAPS AND SYMBOLS IS AVAILABLE ON REQUEST

USGS
Historical File
Topographic Division



QUADRANGLE LOCATION

ROAD CLASSIFICATION
Heavy-duty ——— Light-duty ———
Medium-duty ——— Unimproved dirt ———
U.S. Route State Route

ROCK HALL, MD.
NW/4 CHESTERTOWN 15' QUADRANGLE
N3907.5—W7607.5/7.5

1953

AUG 16 1955
2605