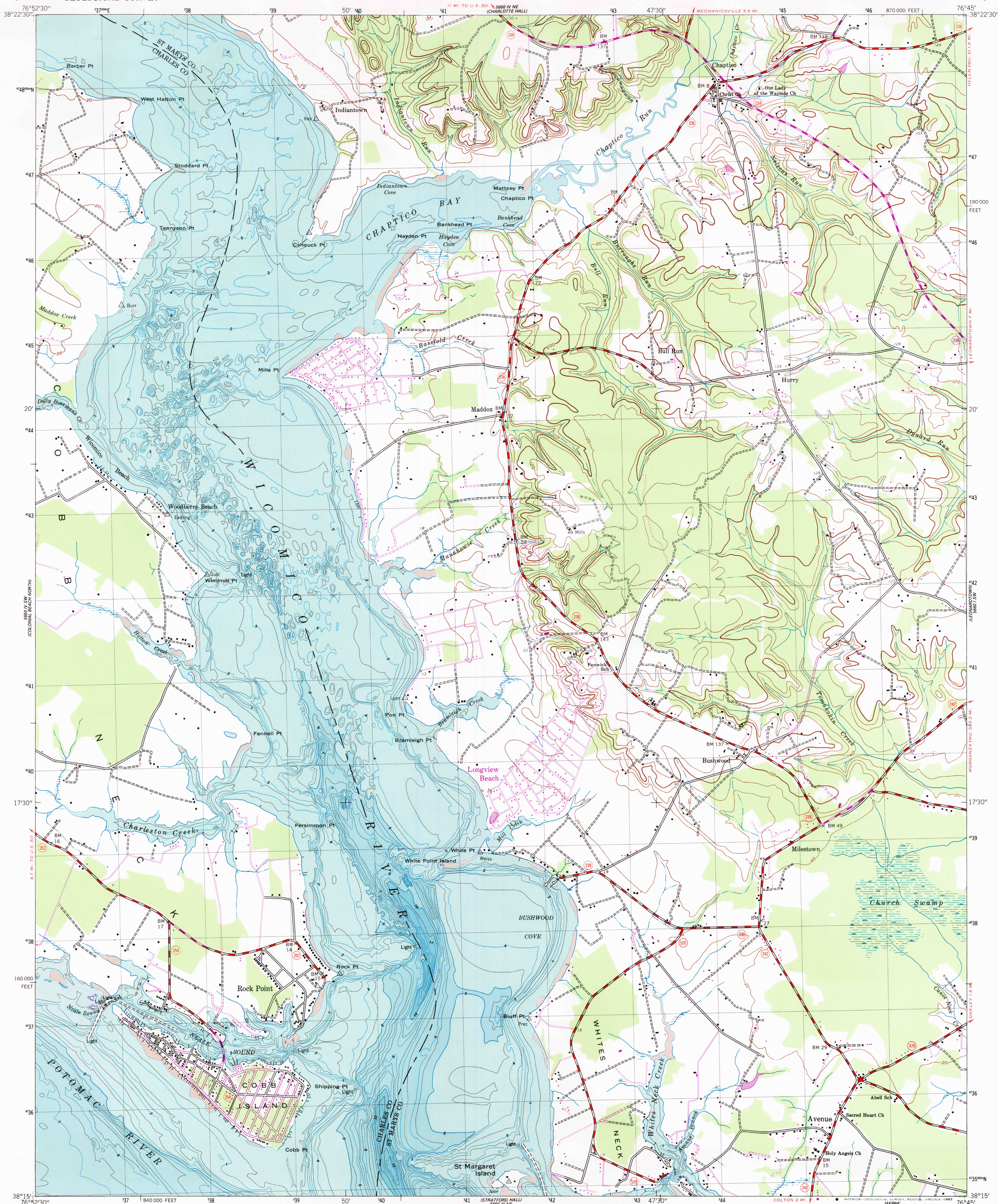


UNITED STATES
DEPARTMENT OF THE INTERIOR
GEOLOGICAL SURVEY

ROCK POINT QUADRANGLE
MARYLAND
7.5 MINUTE SERIES (TOPOGRAPHIC-BATHYMETRIC)



Mapped by the Defense Mapping Agency
Edited and published by the Geological Survey
and the National Ocean Survey

Control by USGS and NOS/NOAA

Topography from aerial photographs by photogrammetric
methods and by plane-table surveys 1943. Aerial photographs
taken 1942

Bathymetry compiled by the National Ocean Survey from tide-
coordinated hydrographic surveys. This information is not
intended for navigational purposes

Mean low water (dotted) line and mean high water (heavy
solid) line compiled by NOS from tide-coordinated aerial
photographs. Apparent shoreline (outer edge of vegetation)
shown by light solid line

Polycyclic projection. 10,000-foot grid ticks based on Maryland
coordinate system
1000-meter Universal Transverse Mercator grid, zone 18
1927 North American Datum
To place on the predicted North American Datum 1983 move
the projection lines 9 meters south and 27 meters west as
shown by dashed corner ticks

Revisions shown in purple compiled by the Geological Survey
from aerial photographs taken 1974 and other sources. This
information is not field checked. Map edited 1974

NATIONAL OCEAN SURVEY HYDROGRAPHIC SURVEY INDEX			
H-8702			
H-8613			
HYDROGRAPHIC SURVEY INFORMATION			
Survey Number	Survey Date	Survey Scale	Survey Line Spacing (Nautical Miles)
H-8613	1961	1:10 000	01-05
H-8702	1961-62	1:10 000	01-05

SCALE 1:24 000

CONTOUR INTERVAL 20 FEET

NATIONAL GEODETIC VERTICAL DATUM OF 1929
BATHYMETRIC CONTOUR INTERVAL 1 METER WITH SUPPLEMENTARY
0.5 METER CONTOURS-DATUM IS MEAN LOW WATER
THE RELATIONSHIP BETWEEN THE TWO DATUMS IS VARIABLE
THE MEAN RANGE OF TIDE IS APPROXIMATELY 0.6 METER

BASE MAP COMPILES WITH NATIONAL MAP ACCURACY STANDARDS
BATHYMETRIC SURVEY DATA COMPILES WITH INTERNATIONAL HYDROGRAPHIC
ORGANIZATION (IHO) SPECIAL PUBLICATION 44 ACCURACY STANDARDS
AND/OR STANDARDS USED AT THE TIME OF THE SURVEY

FOR SALE BY U. S. GEOLOGICAL SURVEY, RESTON, VIRGINIA 22092
AND NATIONAL OCEAN SURVEY, ROCKVILLE, MARYLAND 20852

A FOLDER DESCRIBING TOPOGRAPHIC MAPS AND SYMBOLS IS AVAILABLE ON REQUEST



ROAD CLASSIFICATION

Medium-duty ——— Light-duty ———

Unimproved dirt ———

State Route ———

ROCK POINT, MD.
38076-C7-TB-024

1943
PHOTOGRAPHED 1974
BATHYMETRY ADDED 1982
DMA 5660 IV SE-SERIES V853

