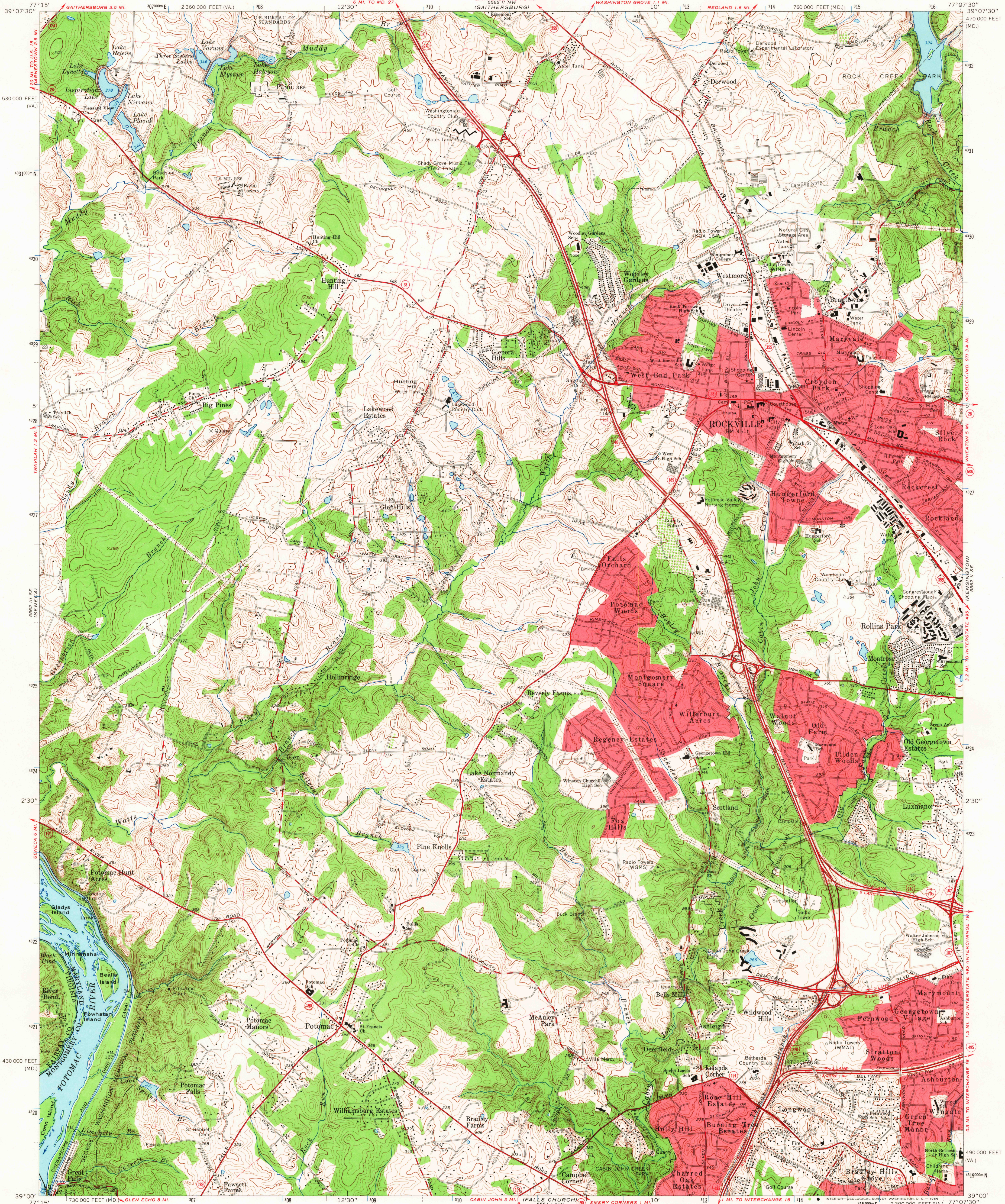


UNITED STATES
DEPARTMENT OF THE INTERIOR
GEOLOGICAL SURVEY

ROCKVILLE QUADRANGLE
MARYLAND-VIRGINIA
7.5 MINUTE SERIES (TOPOGRAPHIC)
SW/4 ROCKVILLE 15 QUADRANGLE



Maped, edited, and published by the Geological Survey

Control by USGS, USC&GS, NCPS, and WSSD

Topography by photogrammetric methods from aerial

photographs taken 1955. Field checked 1956. Revised 1965

Polyconic projection. 1927 North American datum

10,000-foot grids based on Maryland coordinate system,

and Virginia coordinate system, north zone

1,000-meter Universal Transverse Mercator grid ticks,

zone 18, shown in blue

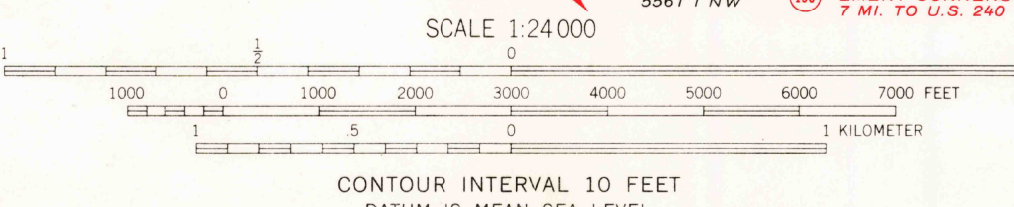
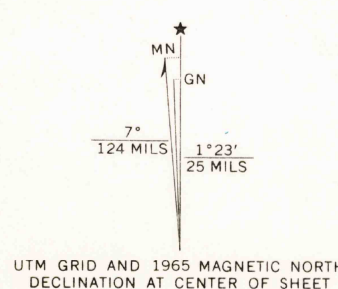
Fine red dashed lines indicate selected fence and field lines where

generally visible on aerial photographs. This information is uncheckd

Red tint indicates areas in which only landmark buildings are shown

Area covered by dashed light-blue pattern

is subject to controlled inundation



CONTOUR INTERVAL 10 FEET

DATUM IS MEAN SEA LEVEL

THIS MAP COMPLIES WITH NATIONAL MAP ACCURACY STANDARDS

FOR SALE BY U.S. GEOLOGICAL SURVEY, WASHINGTON, D. C. 20242

AND VIRGINIA DIVISION OF MINERAL RESOURCES, CHARLOTTESVILLE, VIRGINIA 22903

A FOLDER DESCRIBING TOPOGRAPHIC MAPS AND SYMBOLS IS AVAILABLE ON REQUEST

USGS
Historical File
Topographic Division



QUADRANGLE LOCATION

U.S.G.S.

ROCKVILLE, MD.-VA.

SW/4 ROCKVILLE 15 QUADRANGLE

N3900-W7707.5/7.5

1965

AMS 5562 II SW-SERIES V833

7940

NOV 2 1965