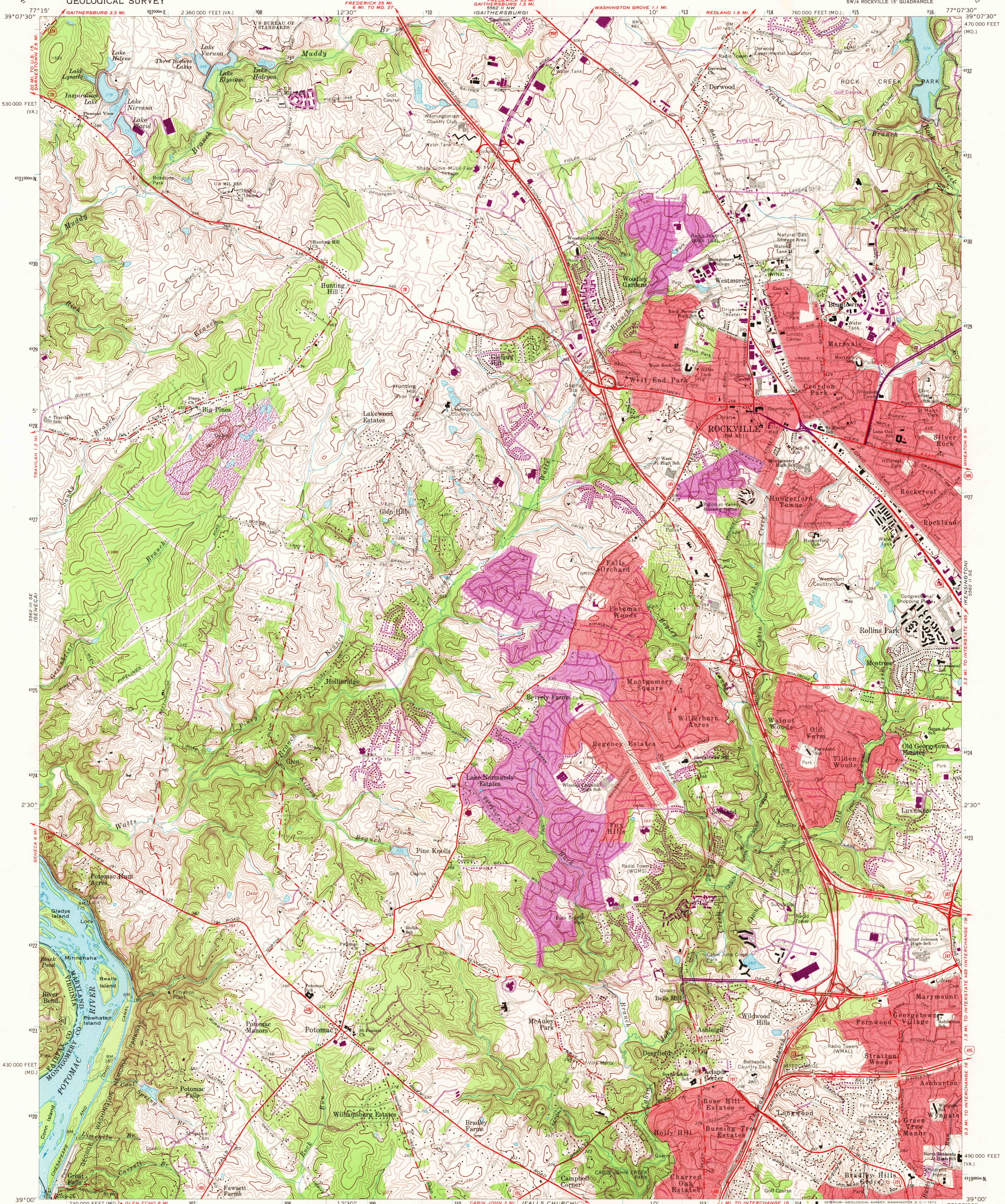
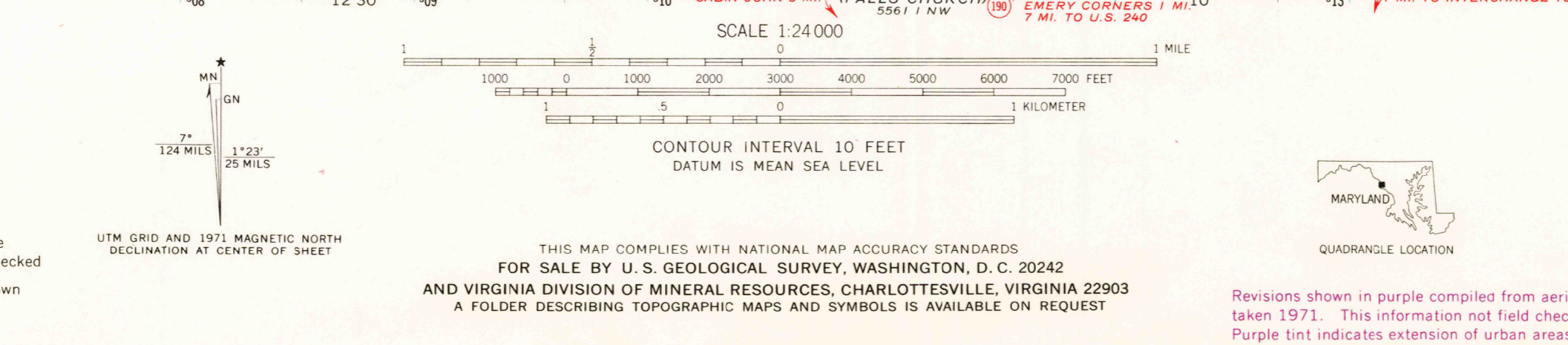


UNITED STATES  
DEPARTMENT OF THE INTERIOR  
GEOLOGICAL SURVEY

ROCKVILLE QUADRANGLE  
MARYLAND-VIRGINIA  
7.5 MINUTE SERIES (TOPOGRAPHIC)  
SW/4 ROCKVILLE 15' QUADRANGLE



Mapped, edited, and published by the Geological Survey  
Control by USGS, USC&GS, NCPS, and WSSD  
Topography by photogrammetric methods from aerial photographs taken 1955. Field checked 1956. Revised 1965  
Polyconic projection. 1927 North American datum 10,000-foot grids based on Maryland coordinate system, and Virginia coordinate system, north zone 1,000-meter Universal Transverse Mercator grid ticks, zone 18, shown in blue  
Fine red dashed lines indicate selected fence and field lines where generally visible on aerial photographs. This information is not checked  
Red tint indicates areas in which only landmark buildings are shown  
Area covered by dashed light-blue pattern is subject to controlled inundation



ROAD CLASSIFICATION  
Heavy-duty ——— Light-duty ———  
Medium-duty ——— Unimproved dirt ———  
Interstate Route ——— U.S. Route ——— State Route ———

UTM GRID AND 1971 MAGNETIC NORTH DECLINATION AT CENTER OF SHEET  
7° 12' 23" N  
124 MILES

THIS MAP COMPLIES WITH NATIONAL MAP ACCURACY STANDARDS  
FOR SALE BY U.S. GEOLOGICAL SURVEY, WASHINGTON, D.C. 20242  
AND VIRGINIA DIVISION OF MINERAL RESOURCES, CHARLOTTESVILLE, VIRGINIA 22903  
A FOLDER DESCRIBING TOPOGRAPHIC MAPS AND SYMBOLS IS AVAILABLE ON REQUEST

Revisions shown in purple compiled from aerial photographs taken 1971. This information not field checked  
Purple tint indicates extension of urban areas

1965  
PHOTOREVISED 1971  
AMS 5562 II SW—SERIES 8833

ROCKVILLE, MD.—VA.  
SW/4 ROCKVILLE 15' QUADRANGLE  
N3900—W7707.5/7.5

JAN 25 1972

USGS  
HISTORICAL FILE  
TOPOGRAPHIC DIVISION