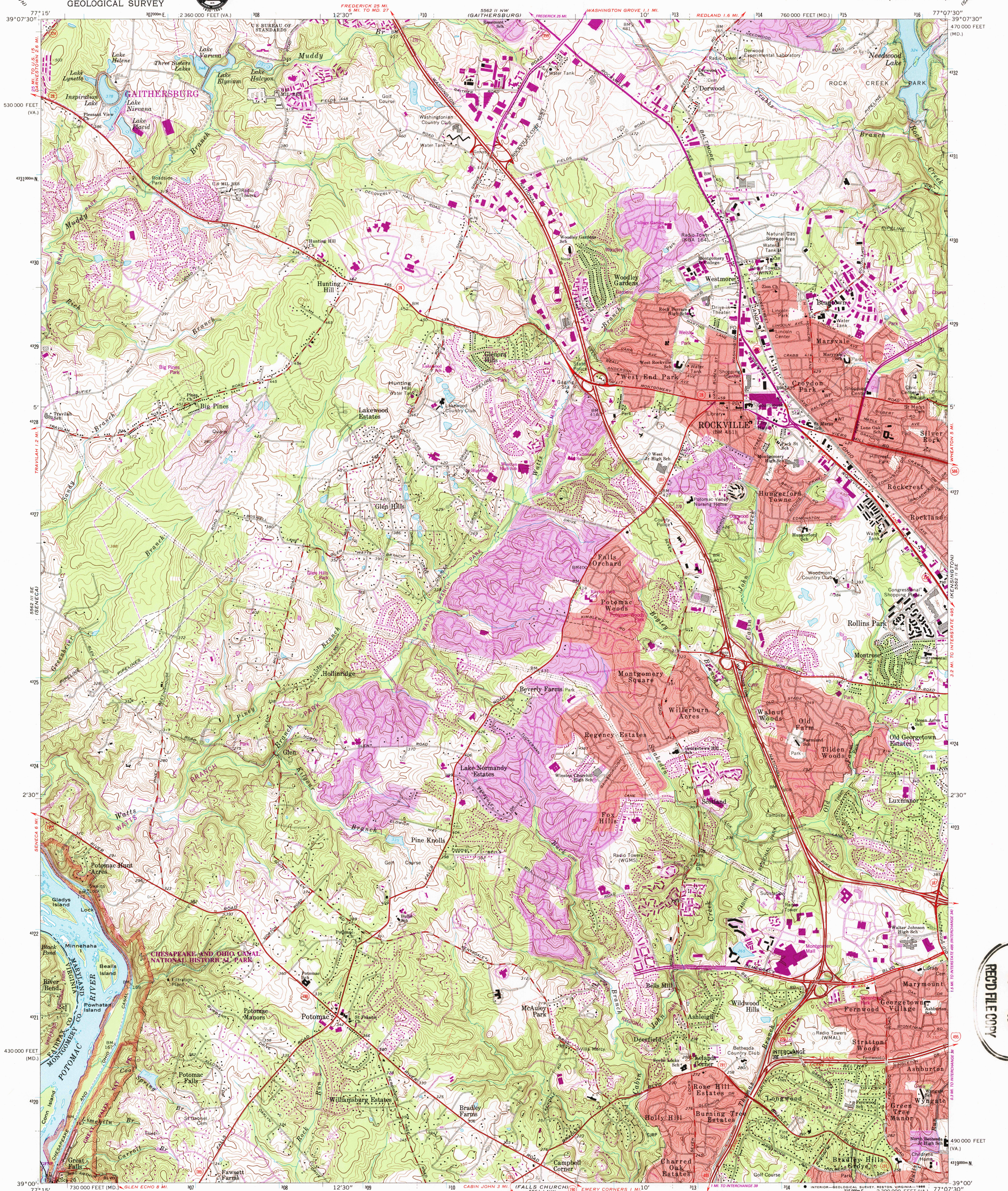


UNITED STATES  
DEPARTMENT OF THE INTERIOR  
GEOLOGICAL SURVEY

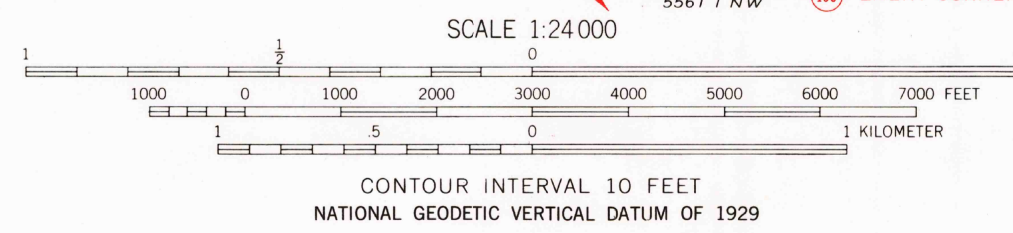
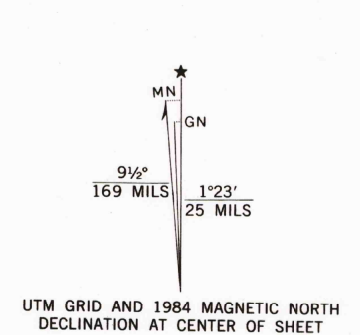


ROCKVILLE QUADRANGLE  
MARYLAND-VIRGINIA  
7.5 MINUTE SERIES (TOPOGRAPHIC)



USGS AND HISTORICAL MAP  
OCT 16 1986  
REC'D FILE COPY

Mapped, edited, and published by the Geological Survey  
Control by USGS, NOS/NOAA, NCPS and WSSC  
Topography by photogrammetric methods from aerial photographs  
taken 1955. Field checked 1956. Revised 1965  
Polyconic projection. 10,000-foot grid ticks based on Maryland  
coordinate system, and Virginia coordinate system, north zone  
1000-meter Universal Transverse Mercator grid ticks,  
zone 18, shown in blue  
1927 North American Datum  
To place on the predicted North American Datum 1983  
move the projection lines 8 meters south and  
26 meters west as shown by dashed corner ticks  
Fine red dashed lines indicate selected fence and field lines where  
generally visible on aerial photographs. This information is unchecked  
Red tint indicates areas in which only landmark buildings are shown  
Areas covered by dashed light-blue pattern are subject to controlled inundation  
There may be private inholdings within the boundaries of  
the National or State reservations shown on this map



THIS MAP COMPLIES WITH NATIONAL MAP ACCURACY STANDARDS  
FOR SALE BY U.S. GEOLOGICAL SURVEY, RESTON, VIRGINIA 22092  
AND VIRGINIA DIVISION OF MINERAL RESOURCES, CHARLOTTESVILLE, VIRGINIA 22903  
A FOLDER DESCRIBING TOPOGRAPHIC MAPS AND SYMBOLS IS AVAILABLE ON REQUEST

Revisions shown in purple and woodland compiled in cooperation with  
Commonwealth of Virginia agencies from aerial photographs  
taken 1981 and other sources. This information not field checked  
Map edited 1984  
Purple tint indicates extension of urban areas

ROAD CLASSIFICATION  
Heavy-duty ——— Light-duty ———  
Medium-duty ——— Unimproved dirt ———  
Interstate Route ——— U.S. Route ——— State Route ———



ROCKVILLE, MD. - VA.  
39077-A2-TF-024

1965  
PHOTOREVISED 1984  
DMA 5562 II SW - SERIES V833