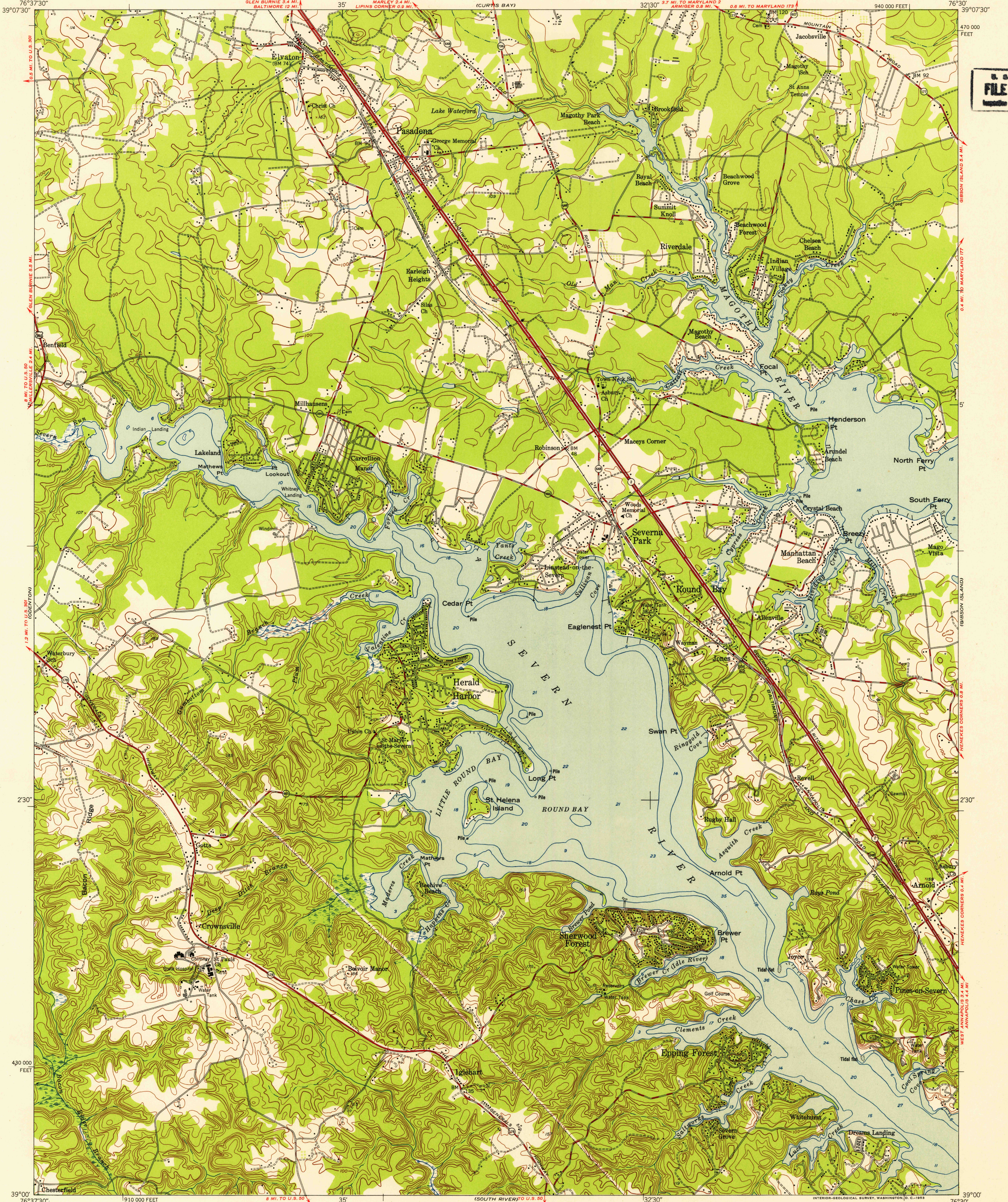


FILE COPY  
topographic and editing



Mapped by the Army Map Service  
Published for civil use by the Geological Survey  
Control by USGS, USC&GS, USCE, and SCS  
Topography by plane-table surveys and photoplanimetric methods  
Aerial photographs taken 1949  
Coastal hydrography compiled from USC&GS Chart No. 549, 1944 (corrected to 1947),  
Chart No. 550, 1935 (corrected to 1947), and Chart No. 566, 1948 (corrected  
to 1949)  
Field check 1949  
Polyconic projection. 1927 North American datum  
10,000-foot grid based on Maryland coordinate system

TRUE NORTH  
MAGNETIC NORTH  
APPROXIMATE MEAN  
DECLINATION, 1949

SCALE 1:24,000  
1 000 0 1000 2000 3000 4000 5000 6000 7000 FEET  
1 0 5 0 1 KILOMETER  
CONTOUR INTERVAL 20 FEET  
DATUM IS MEAN SEA LEVEL  
DEPTH CURVES AND SOUNDINGS IN FEET—DATUM IS MEAN LOW WATER  
SHORELINE SHOWN REPRESENTS THE APPROXIMATE LINE OF MEAN HIGH WATER  
THE AVERAGE RANGE OF TIDE IS APPROXIMATELY 3.5 FEET

USGS  
Historical File  
Topographic Division  
MARYLAND  
QUADRANGLE LOCATION

ROAD CLASSIFICATION  
Heavy-duty 4 LANE 18 LANE Light-duty  
Medium-duty 4 LANE 18 LANE Unimproved dirt  
U.S. Route State Route

FILE COPY  
topographic and editing

ROUND BAY, MD.  
SE/4 RELAY 15' QUADRANGLE  
N3900-W7630/7.5

1949 OCT 26 1953