

(BRUCETON)  
1:62500

UNITED STATES  
DEPARTMENT OF THE INTERIOR  
GEOLOGICAL SURVEY

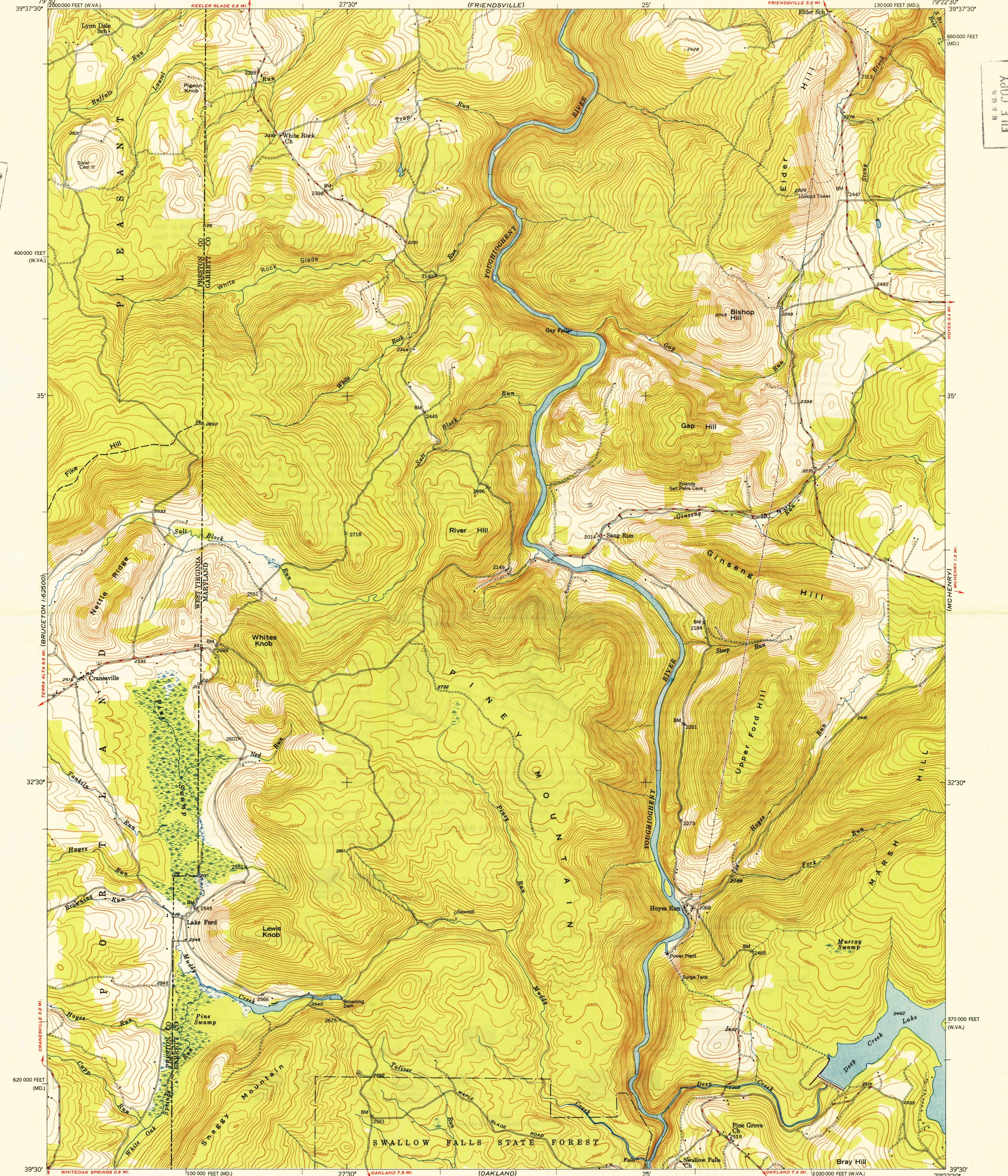
STATE OF MARYLAND  
DEPARTMENT OF GEOLOGY, MINES, AND WATER RESOURCES  
JOSEPH T. SINGEWALD, JR., DIRECTOR  
(FRIENDSVILLE)

SANG RUN QUADRANGLE  
MARYLAND-WEST VIRGINIA  
7.5 MINUTE SERIES (TOPOGRAPHIC)

(ACIDENT)  
1:62500

U.S.G.S.  
FILE COPY  
Inspection and Editing

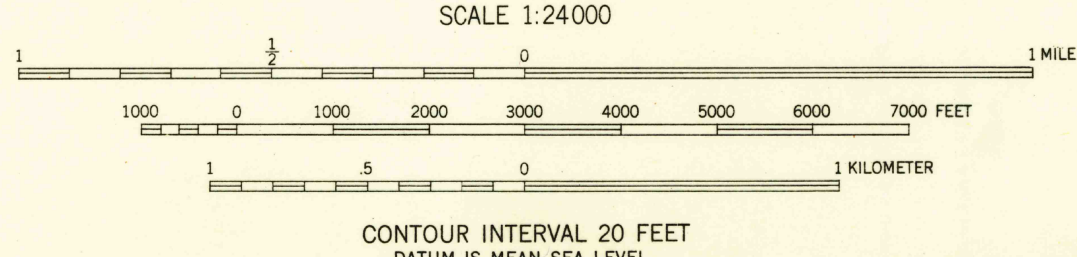
U.S.G.S.  
FILE COPY  
Inspection and Editing



(KINGWOOD)  
1:62500

Maped, edited, and published by the Geological Survey  
Control by USGS  
Topography from aerial photographs by multiplex methods  
Aerial photographs taken 1946. Field check 1947  
Polyconic projection. 1927 North American datum  
10,000-foot grids based on Maryland coordinate system,  
and West Virginia coordinate system, north zone  
Extent of state forest areas uncertain

TRUE NORTH  
MAGNETIC NORTH  
APPROXIMATE MEAN  
DECLINATION, 1947



THIS MAP COMPLIES WITH NATIONAL MAP ACCURACY STANDARDS  
FOR SALE BY U. S. GEOLOGICAL SURVEY, WASHINGTON 25, D. C.

USGS  
Historical File  
Topographic Division

U.S.G.S.  
FILE COPY  
Inspection and Editing

ROAD CLASSIFICATION  
HARD-SURFACE ALL WEATHER ROADS DRY WEATHER ROADS  
Heavy-duty... 4 LANE 16 LANE Improved dirt...  
Medium-duty... 4 LANE 16 LANE Unimproved dirt...  
Loose-surface, graded, or narrow hard-surface...  
U. S. Route State Route

SANG RUN, MD. - W.V.A.  
N3930-W7922.5/7.5

PRINTED 1949

JUN 28 1949