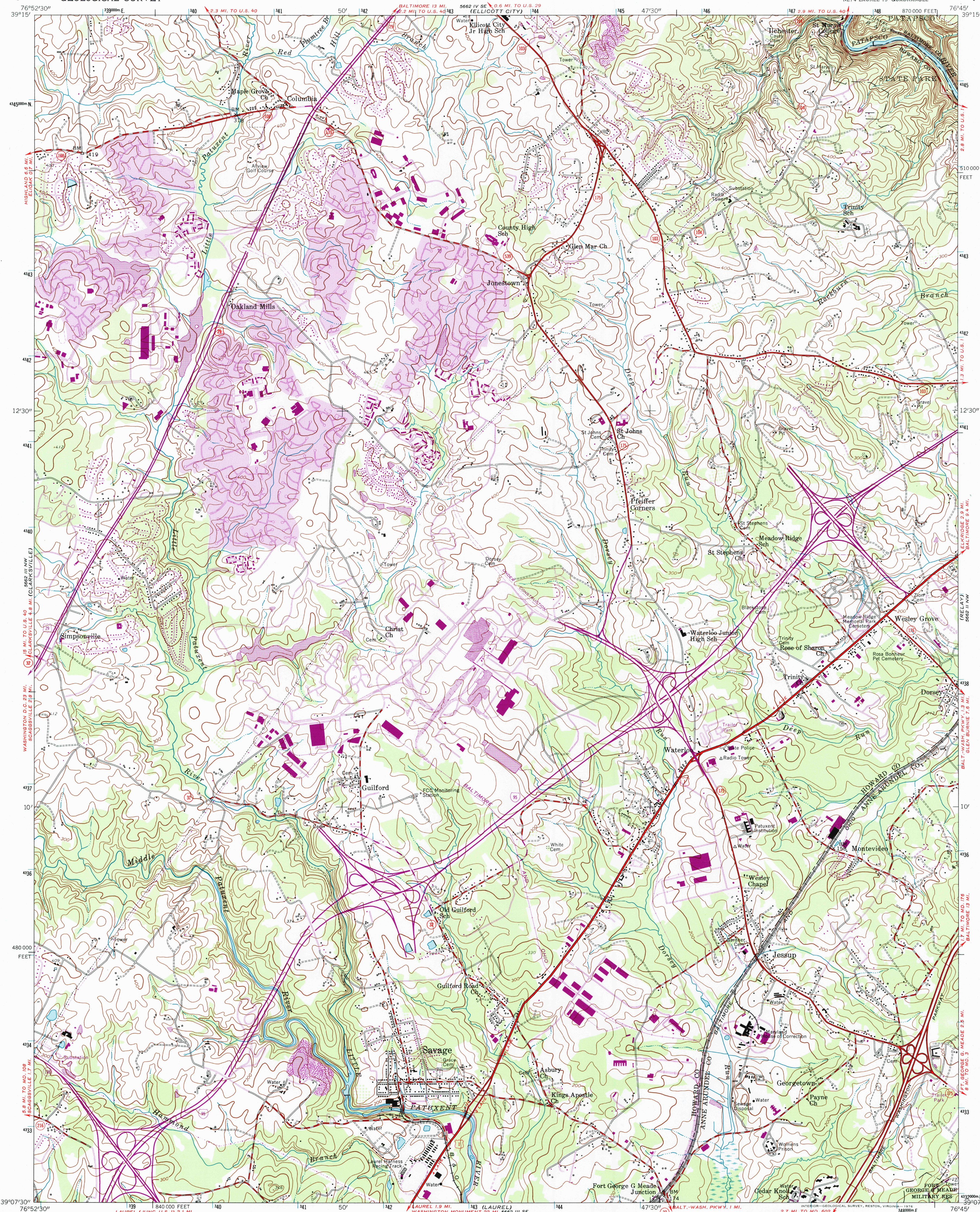


UNITED STATES
DEPARTMENT OF THE INTERIOR
GEOLOGICAL SURVEY

SAVAGE QUADRANGLE
MARYLAND
7.5 MINUTE SERIES (TOPOGRAPHIC)
NE 1/4 LAUREL 15' QUADRANGLE

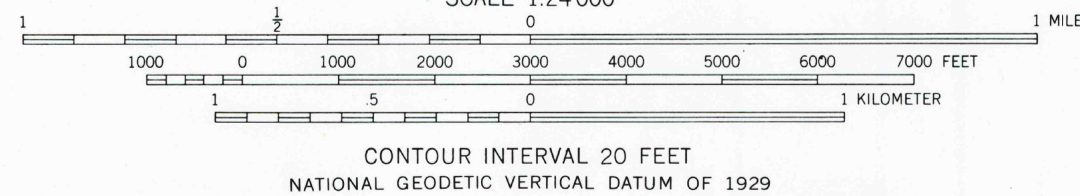
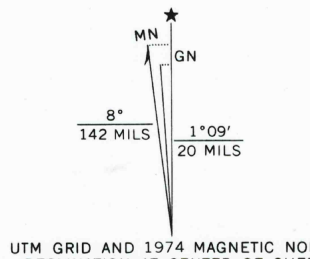


Map by the Army Map Service
Published for civil use by the Geological Survey

Control by USGS, USC&GS, USCE, and SCS
Topography from aerial photographs by photogrammetric methods
and by planetable surveys 1943. Planimetric detail revised
from aerial photographs taken 1955. Field check 1957

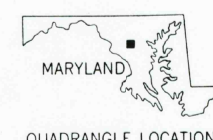
Polyconic projection. 1927 North American datum
10,000-foot grid based on Maryland coordinate system
1000-meter Universal Transverse Mercator grid ticks,
zone 18, shown in blue

Revisions shown in purple compiled by the Geological Survey from
aerial photographs taken 1966 and 1974. This information not
field checked
Purple tint indicates extension of urban areas



THIS MAP COMPLIES WITH NATIONAL MAP ACCURACY STANDARDS
FOR SALE BY U. S. GEOLOGICAL SURVEY, RESTON, VIRGINIA 22092
A FOLDER DESCRIBING TOPOGRAPHIC MAPS AND SYMBOLS IS AVAILABLE ON REQUEST

ROAD CLASSIFICATION
Heavy-duty ——— Light-duty ———
Medium-duty ——— Unimproved dirt ———
U.S. Route ——— State Route ———



SAVAGE, MD.
NE 1/4 LAUREL 15' QUADRANGLE
N 3907.5 — W 7645.7
1957
PHOTOREVISED 1966 AND 1974
AMS 5662 III NE—SERIES V833

RECEIVED
APR 3 0 2000
USGS MND
HISTORICAL MAP ARCHIVES

