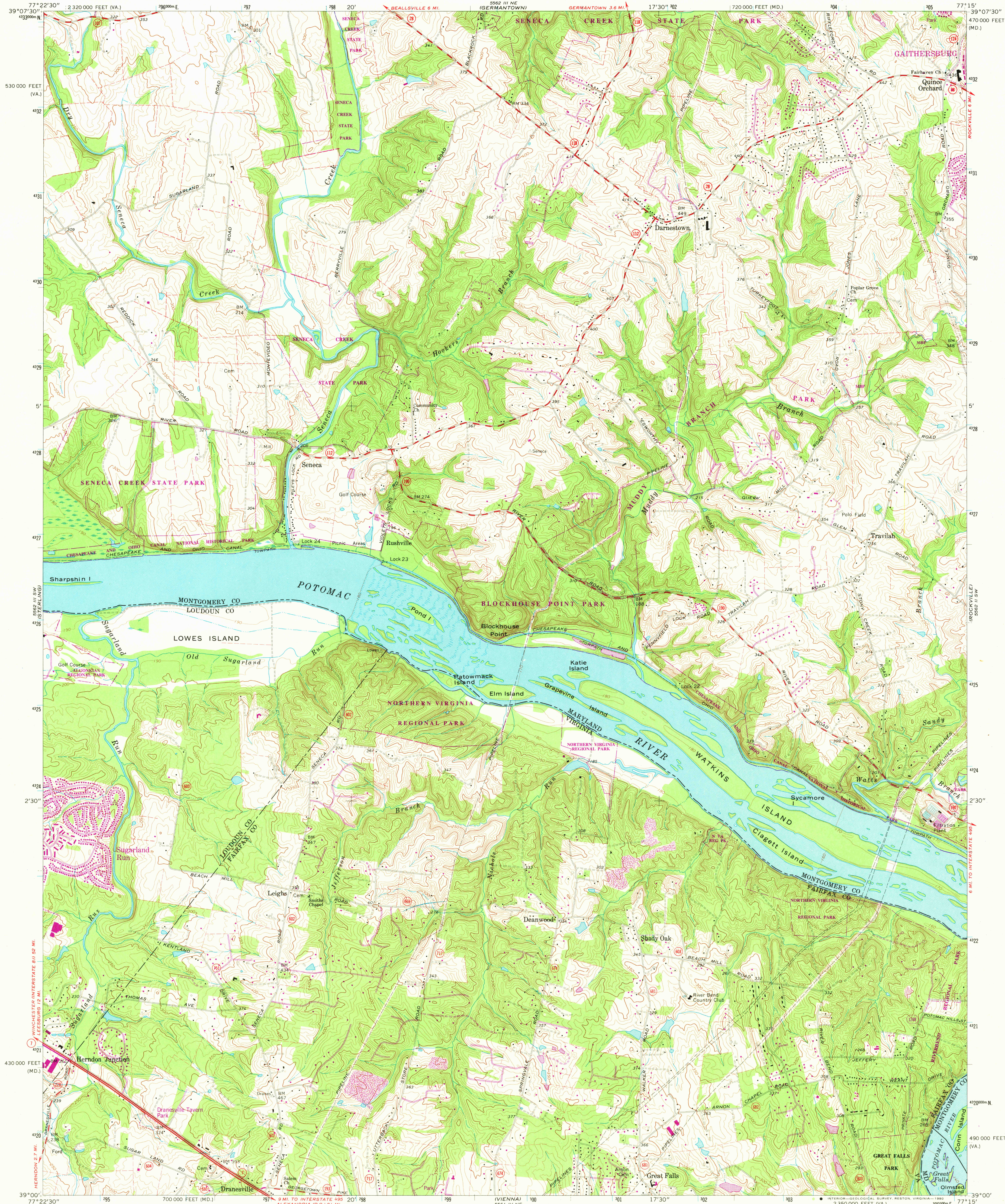


UNITED STATES
DEPARTMENT OF THE INTERIOR
GEOLOGICAL SURVEY

SENECA QUADRANGLE
MARYLAND-VIRGINIA
7.5 MINUTE SERIES (TOPOGRAPHIC)



Mapped, edited, and published by the Geological Survey

Control by USGS and USC&GS

Topography by photogrammetric methods from aerial photographs

taken 1963. Field checked 1968

Supersedes Army Map Service map dated 1952

Polyconic projection. 1927 North American datum

10,000-foot grids based on Maryland coordinate system and Virginia

coordinate system, north zone

1000-meter Universal Transverse Mercator grid ticks, zone 18,

shown in blue

To place on the predicted North American Datum 1983

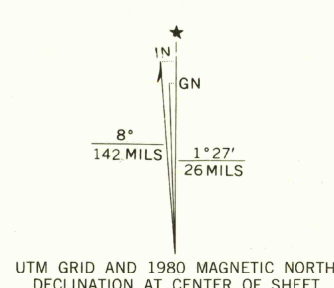
move the projection lines 8 meters south and

25 meters west as shown by dashed corner ticks

There may be private inholdings within the boundaries of

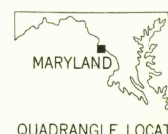
the National or State reservations shown on this map

Fine red dashed lines indicate selected fence and field lines where
generally visible on aerial photographs. This information is unchecked



CONTOUR INTERVAL 10 FEET
NATIONAL GEODETIC VERTICAL DATUM OF 1929

THIS MAP COMPLIES WITH NATIONAL MAP ACCURACY STANDARDS
FOR SALE BY U. S. GEOLOGICAL SURVEY, RESTON, VIRGINIA 22092
AND VIRGINIA DIVISION OF MINERAL RESOURCES, CHARLOTTESVILLE, VIRGINIA 22903
A FOLDER DESCRIBING TOPOGRAPHIC MAPS AND SYMBOLS IS AVAILABLE ON REQUEST



QUADRANGLE LOCATION

Revisions shown in purple and woodland compiled in cooperation with
Commonwealth of Virginia agencies from aerial photographs taken 1977
and other source data. This information not field checked. Map edited 1980

ROAD CLASSIFICATION
Primary highway, all weather, hard surface
Secondary highway, all weather, hard surface
Light-duty road, all weather, improved surface
Unimproved road, fair or dry weather
State Route

SENECA, MD.-VA.

N3900-W7715/7.5

1968

PHOTOREVISED 1980

DMA 5562 III SE-SERIES V683

5450
DEC 11 1988