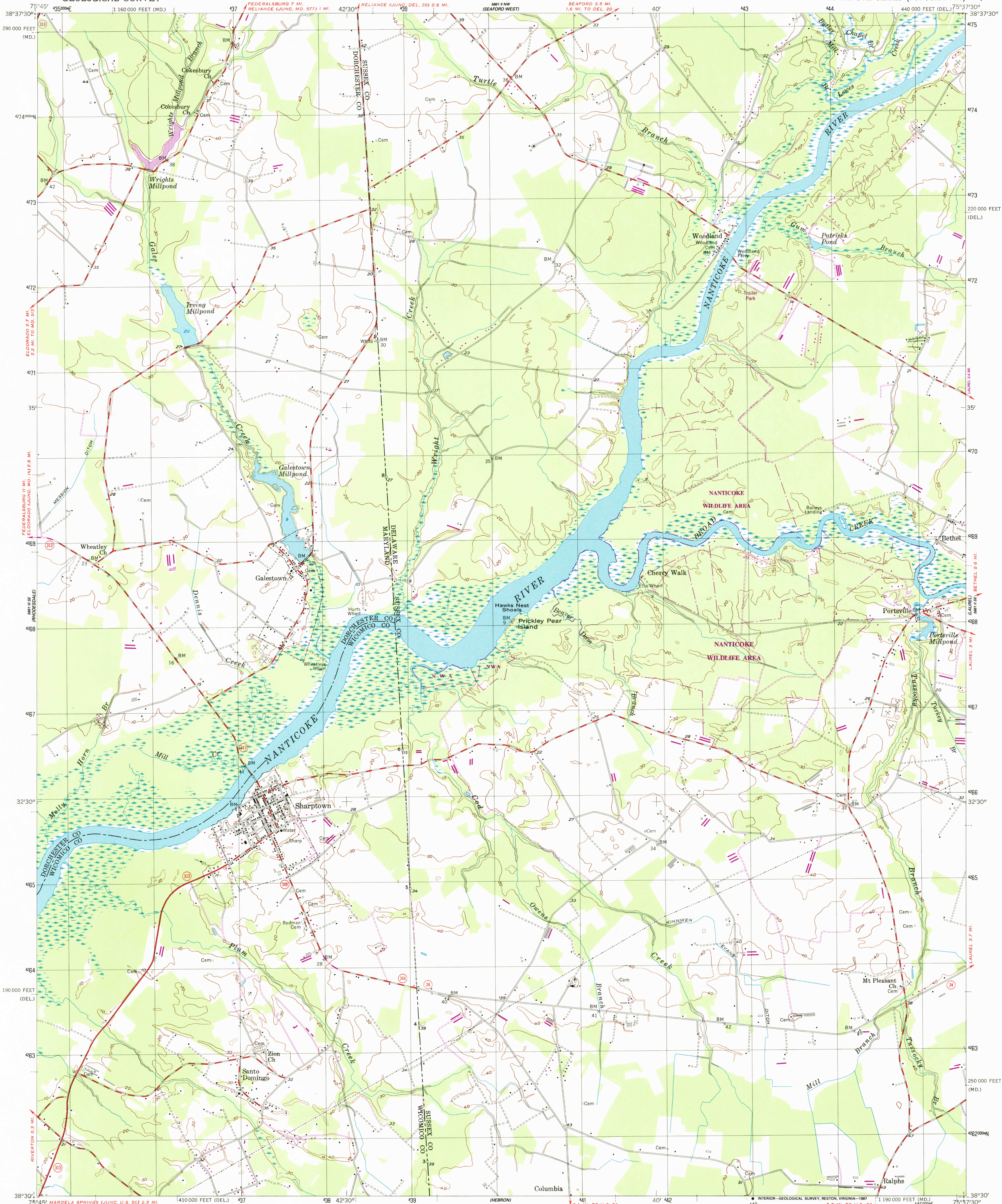


UNITED STATES  
DEPARTMENT OF THE INTERIOR  
GEOLOGICAL SURVEY

SHARPTOWN QUADRANGLE  
MARYLAND-DELAWARE  
7.5 MINUTE SERIES (TOPOGRAPHIC)



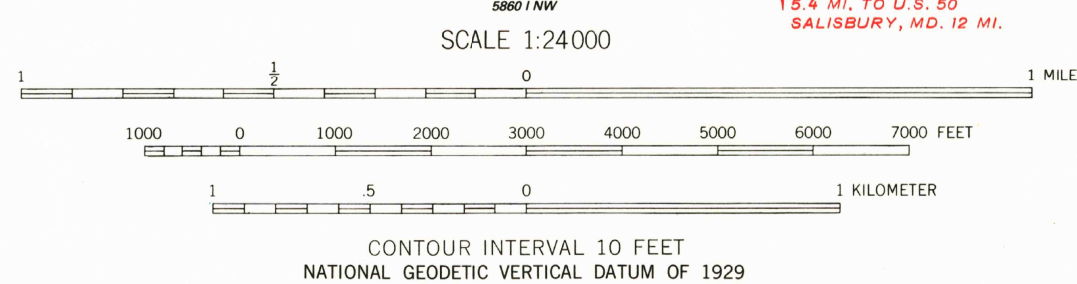
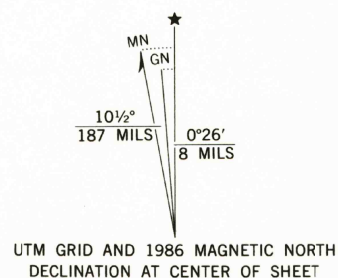
Mapped, edited, and published by the Geological Survey

Control by USGS, NOS/NOAA, and USCE  
Planimetry in part by photogrammetric methods from aerial  
photographs taken 1954. Topography by planetable surveys 1955

Polyconic projection. 10,000-foot grid ticks based on  
Delaware and Maryland coordinate systems  
1000-meter Universal Transverse Mercator grid, zone 18  
1927 North American Datum  
To place on the predicted North American Datum 1983  
move the projection lines 8 meters south and  
30 meters west as shown by dashed corner ticks

There may be private inholdings within the boundaries of  
the National or State reservations shown on this map

Revisions shown in purple and woodland compiled from  
aerial photographs taken 1982 and other sources  
This information not field checked. Map edited 1986



Primary highway,  
hard surface  
Secondary highway,  
hard surface  
Light-duty road, hard or  
improved surface  
Unimproved road  
Interstate Route  
U. S. Route  
State Route

SHARPTOWN, MD. - DEL.  
38075-E6-TF-024

1955  
PHOTOREVISED 1986  
DMA 5861 II SW-SERIES V832

