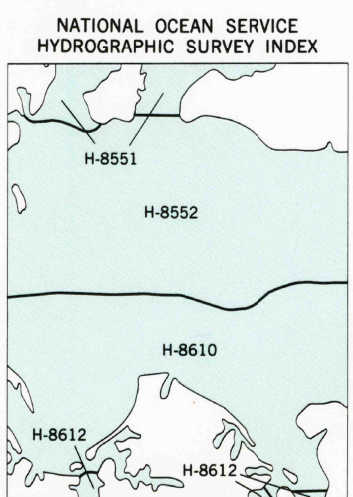
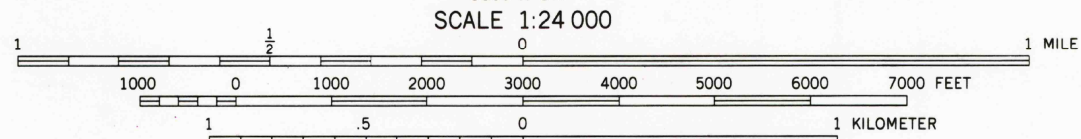


Mapped, edited, and published by the Geological Survey and the National Ocean Service
Control by USGS and NOS/NOAA
Topography by photogrammetric methods from aerial photographs taken 1967. Field checked 1968.
Bathymetry compiled by the National Ocean Service from tide-coordinated hydrographic surveys. This information is not intended for navigational purposes.
Mean low water (dotted) line and mean high water (heavy solid) line compiled by NOS from tide-coordinated aerial photographs. Apparent shoreline (outer edge of vegetation) shown by light solid line.
Polyconic projection. 10,000-foot grid ticks based on Maryland coordinate system and Virginia coordinate system, north zone 1000-meter Universal Transverse Mercator grid, zone 18 1927 North American Datum.
To place on the predicted North American Datum 1983 move the projection lines 9 meters south and 27 meters west as shown by dashed corner ticks.
Revisions shown in purple and woodland compiled in cooperation with Commonwealth of Virginia agencies from aerial photographs taken 1983 and other sources. This information not field checked.
Map edited 1983.



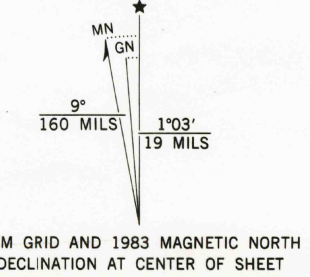
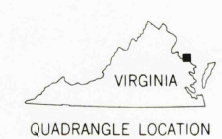
HYDROGRAPHIC SURVEY INFORMATION

Survey Number	Survey Date	Survey Scale	Survey Line Spacing (Nautical Miles)
H-8551	1960	1:10,000	03-06
H-8552	1960	1:10,000	02-07
H-8610	1960-61	1:10,000	02-07
H-8612	1961	1:10,000	02-05



CONTOUR INTERVAL 10 FEET
DASHED LINES REPRESENT 5-FOOT CONTOURS
NATIONAL GEODETIC VERTICAL DATUM OF 1929
BATHYMETRIC CONTOUR INTERVAL 1 METER WITH SUPPLEMENTARY 0.5 METER CONTOURS-DATUM IS MEAN LOW WATER
THE RELATIONSHIP BETWEEN THE TWO DATUMS IS VARIABLE
THE MEAN RANGE OF TIDE IS APPROXIMATELY 0.5 METER

BASE MAP COMPLIES WITH NATIONAL MAP ACCURACY STANDARDS
BATHYMETRIC SURVEY DATA COMPLIES WITH INTERNATIONAL HYDROGRAPHIC ORGANIZATION (IHO) SPECIAL PUBLICATION 44 ACCURACY STANDARDS
AND/OR STANDARDS USED AT THE DATE OF THE SURVEY
FOR SALE BY U. S. GEOLOGICAL SURVEY, RESTON, VIRGINIA 22092,
NATIONAL OCEAN SERVICE, ROCKVILLE, MARYLAND 20852,
AND VIRGINIA DIVISION OF MINERAL RESOURCES, CHARLOTTESVILLE, VIRGINIA 22903
A FOLDER DESCRIBING TOPOGRAPHIC MAPS AND SYMBOLS IS AVAILABLE ON REQUEST



ROAD CLASSIFICATION
Light-duty road, all weather, Unimproved road, fair or dry weather
improved surface

State Route

ST. CLEMENTS ISLAND, MD. - VA.
38076-B6-TB-024
1968
PHOTOREVISED 1983
BATHYMETRY ADDED 1982
DMA 5660 II NW-SERIES V833

