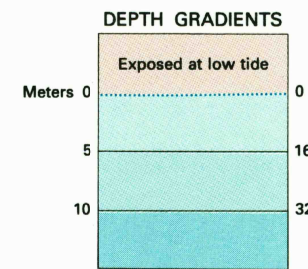
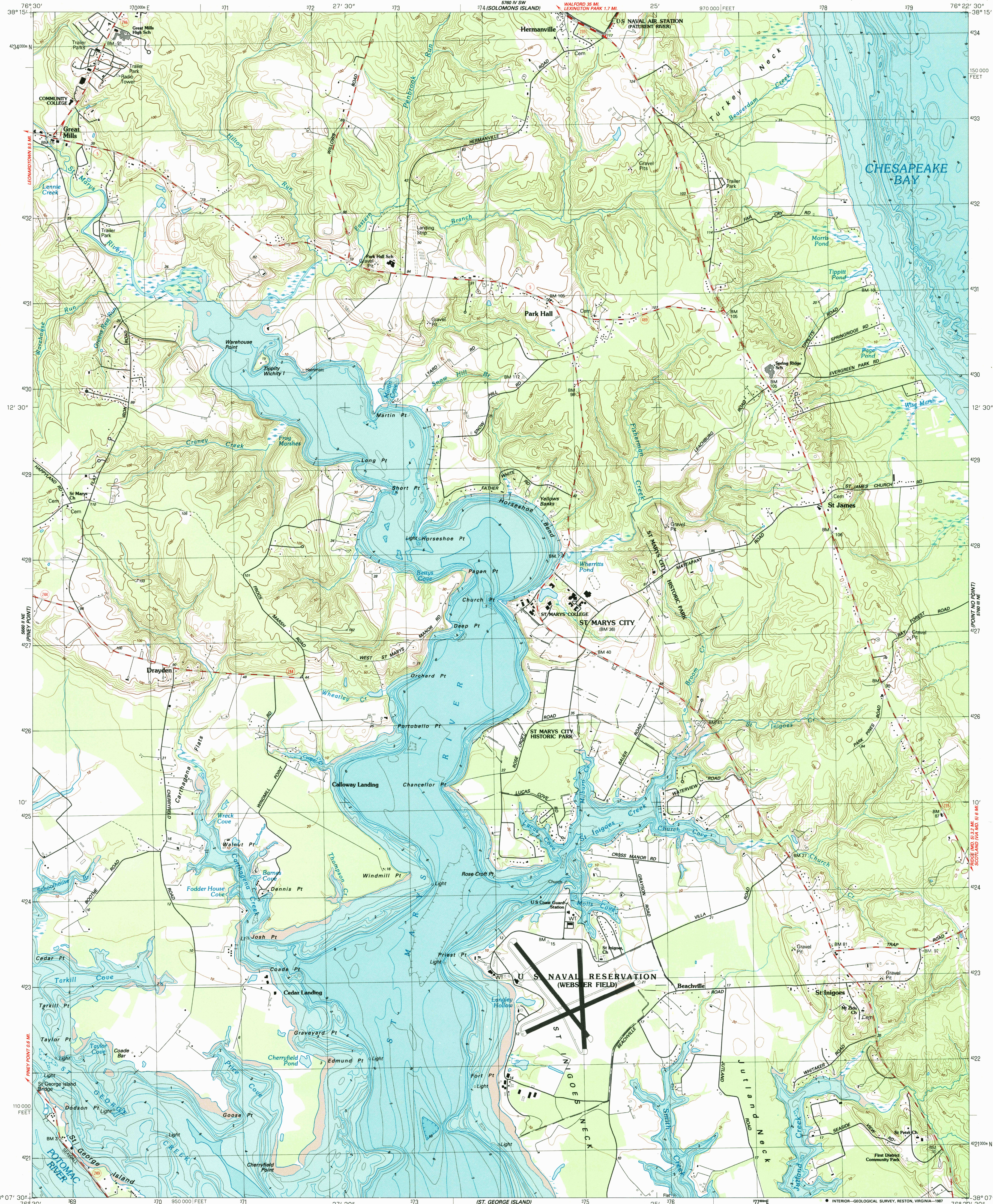
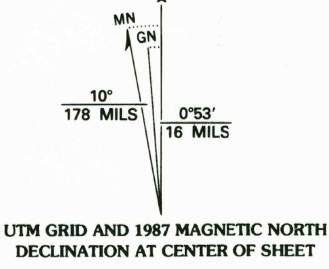


UNITED STATES
DEPARTMENT OF THE INTERIOR
GEOLOGICAL SURVEY

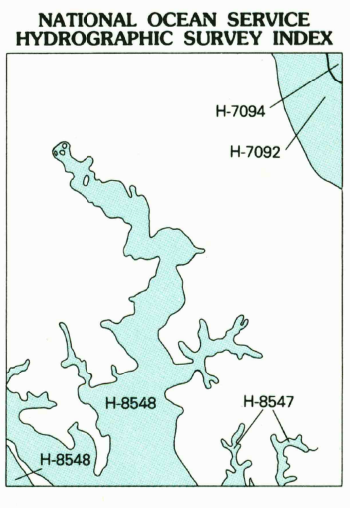
ST. MARYS CITY QUADRANGLE
MARYLAND-ST. MARYS CO.
7.5 MINUTE SERIES (TOPOGRAPHIC-BATHYMETRIC)



Produced by the United States Geological Survey
and the National Ocean Service
Control by USGS, NOS/NOAA, and DMA
Topography by photogrammetric methods from aerial photographs
taken 1981. Field checked 1982. Map edited 1987
Supersedes Army Map Service map dated 1943
Bathymetry compiled by the National Ocean Survey from
tide-coordinated hydrographic surveys. This information is
not intended for navigational purposes
Mean low water (dotted line) and mean high water (heavy
solid line) compiled by NOS from tide-coordinated aerial
photographs. Apparent shoreline (outer edge of vegetation)
shown by light solid line
Projection and 10,000-foot grid ticks: Maryland coordinate
system (Lambert conformal conic)
1000-meter Universal Transverse Mercator grid, zone 18
1927 North American Datum
To place on the predicted North American Datum 1983,
move the projection lines 9 meters south and
28 meters west as shown by dashed corner ticks
There may be private inholdings within the boundaries of
the National or State reservations shown on this map
Fine red dashed lines indicate selected fence and field lines where
generally visible on aerial photographs. This information is unchecked



SCALE 1:24 000
1 000 0 1000 2000 3000 4000 5000 6000 7000 8000 9000 10 000
1 000 0 1000 2000 3000 4000 5000 6000 7000 8000 9000 10 000
MILES
FEET
KILOMETERS
METERS
CONTOUR INTERVAL 10 FEET
NATIONAL GEODETIC VERTICAL DATUM OF 1929
BATHYMETRIC CONTOUR INTERVAL 1 METER WITH SUPPLEMENTARY
0.5 METER CONTOURS-DATUM IS MEAN LOW WATER
THE RELATIONSHIP BETWEEN THE TWO DATUMS IS VARIABLE
THIS MAP COMPLIES WITH NATIONAL MAP ACCURACY STANDARDS
BATHYMETRIC SURVEY DATA COMPLETES WITH INTERNATIONAL HYDROGRAPHIC
ORGANIZATION (IHO) SPECIAL PUBLICATION 44 ACCURACY STANDARDS
AND/OR STANDARDS USED AT THE DATE OF THE SURVEY
FOR SALE BY U.S. GEOLOGICAL SURVEY, DENVER, COLORADO 80225, OR RESTON, VIRGINIA 22092
AND NATIONAL OCEAN SERVICE, ROCKVILLE, MARYLAND 20852
A FOLDER DESCRIBING TOPOGRAPHIC MAPS AND SYMBOLS IS AVAILABLE ON REQUEST



ROAD CLASSIFICATION
Primary highway, hard surface
Secondary highway, hard surface
Unimproved road
Interstate Route
U. S. Route
State Route

ST. MARYS CITY, MD.

38076-B4-TB-024

1987

DMA 5760 III NW-SERIES V833

HYDROGRAPHIC SURVEY INFORMATION				
SURVEY NUMBER	SURVEY DATE	SURVEY SCALE	SURVEY LINE SPACING (NAUT. MILES)	
H-7094	1946	1:10,000	02-15	
H-7092	1946-48	1:20,000	02-18	
H-8548	1969-80	1:10,000	03-10	
H-8547	1980	1:10,000	02-07	

