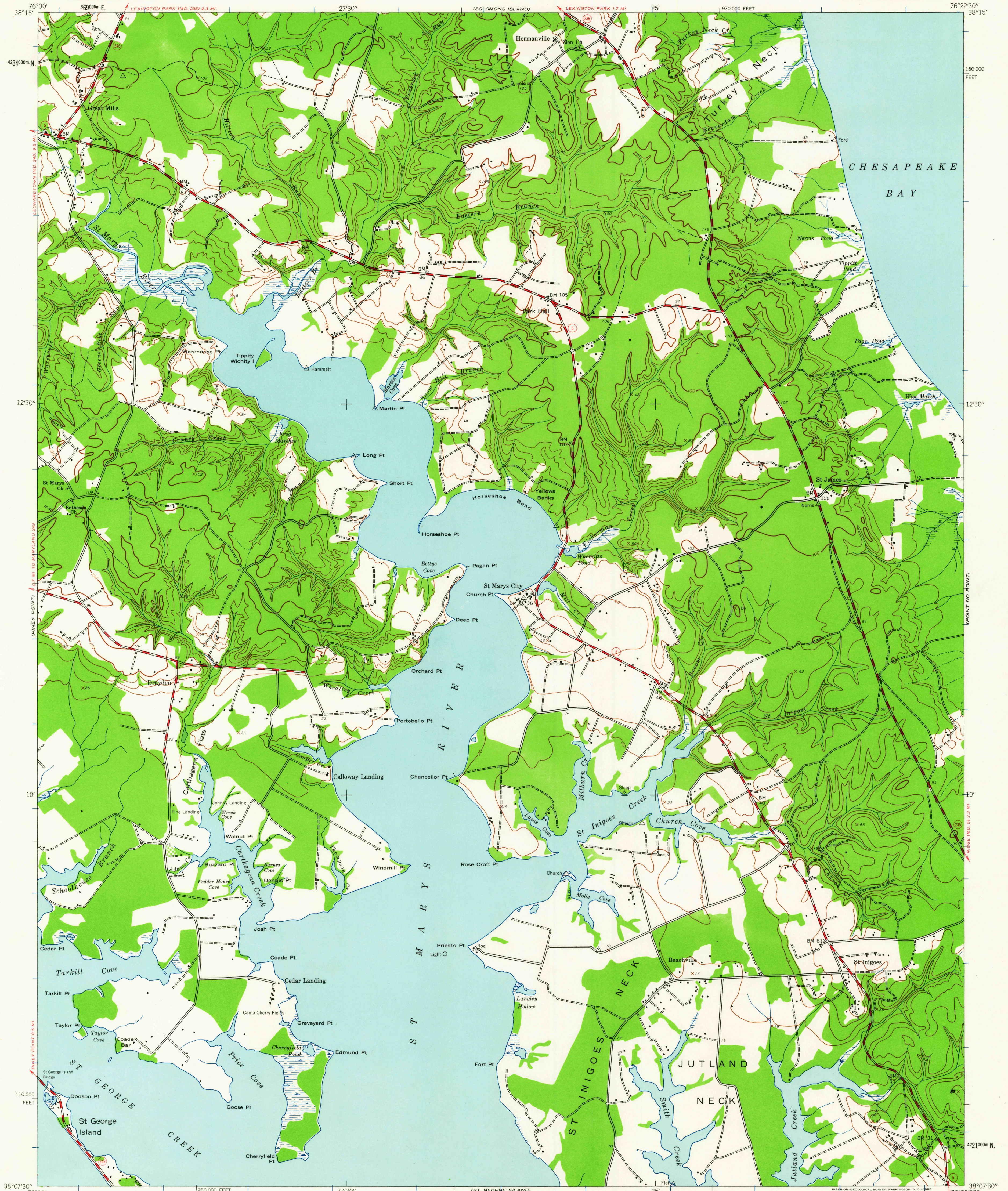


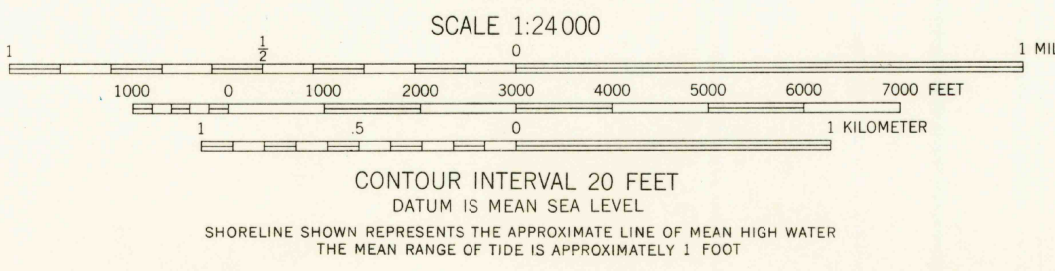
UNITED STATES
DEPARTMENT OF THE INTERIOR
GEOLOGICAL SURVEY

ST. MARYS CITY QUADRANGLE
MARYLAND-ST. MARYS CO.
7.5 MINUTE SERIES (TOPOGRAPHIC)
NW 1/4 POINT LOOKOUT 15' QUADRANGLE



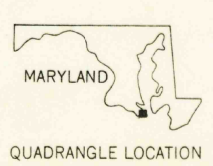
Mapped by the Army Map Service
Published for civil use by the Geological Survey
Control by USC&GS
Topography from aerial photographs by photogrammetric
methods and by planetable surveys 1943
Aerial photographs taken 1942
Polyconic projection, 1927 North American datum
10,000-foot grid based on Maryland coordinate system
1000-meter Universal Transverse Mercator grid ticks,
zone 18, shown in blue

TRUE NORTH
MAGNETIC NORTH
APPROXIMATE MEAN
DECLINATION, 1943



THIS MAP COMPLIES WITH NATIONAL MAP ACCURACY STANDARDS
FOR SALE BY U. S. GEOLOGICAL SURVEY, WASHINGTON 25, D. C.
A FOLDER DESCRIBING TOPOGRAPHIC MAPS AND SYMBOLS IS AVAILABLE ON REQUEST

USGS
Historical File
Topographic Division



ROAD CLASSIFICATION
Medium-duty ——— Light-duty ———
Unimproved dirt ———
State Route ———

USGS
FILE COPY
TOPOGRAPHIC DIVISION

ST. MARYS CITY, MD.
NW 1/4 POINT LOOKOUT 15' QUADRANGLE
N3807.5-W7622.5/7.5

1943

FEB 12 1962

2580