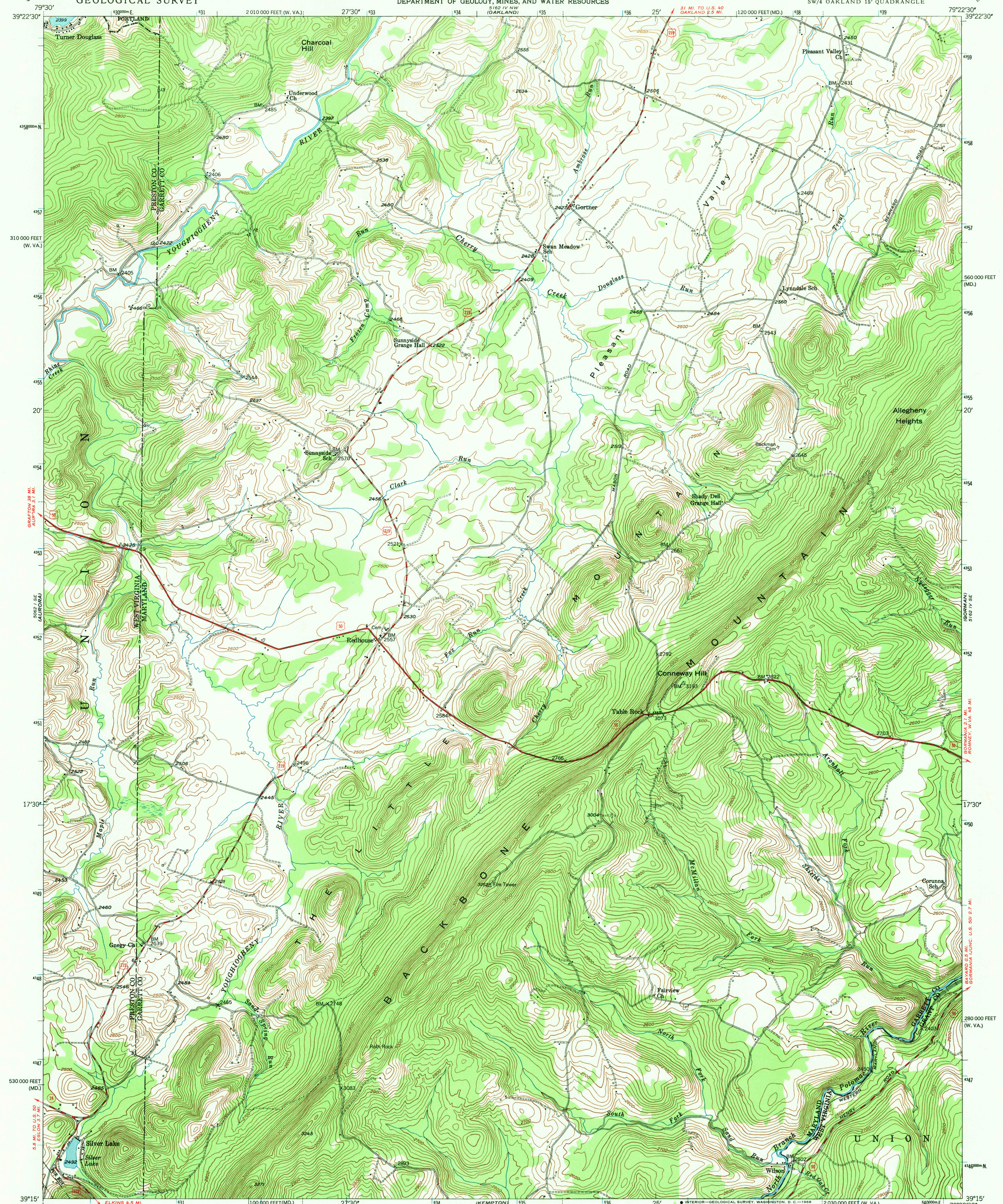


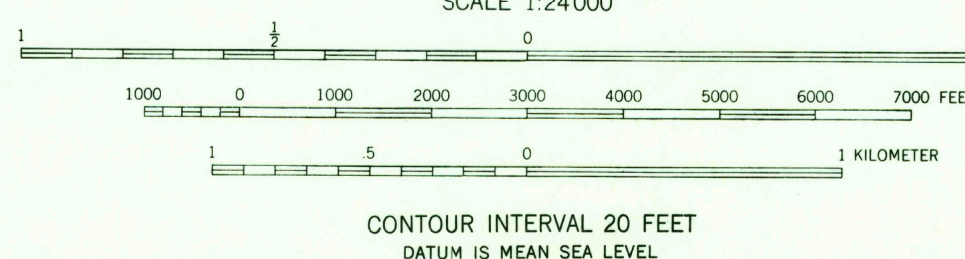
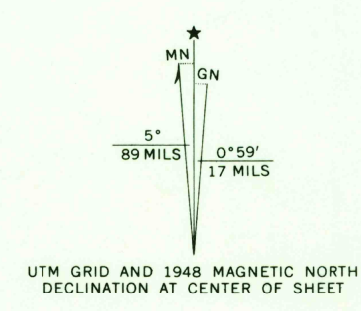
UNITED STATES
DEPARTMENT OF THE INTERIOR
GEOLOGICAL SURVEY

STATE OF MARYLAND
DEPARTMENT OF GEOLOGY, MINES, AND WATER RESOURCES

TABLE ROCK QUADRANGLE
MARYLAND-WEST VIRGINIA
7.5 MINUTE SERIES (TOPOGRAPHIC)
SW/4 OAKLAND 15' QUADRANGLE



Mapped, edited, and published by the Geological Survey
Control by USGS and USC&GS
Topography from aerial photographs by multiplex methods
Aerial photographs taken 1946. Field check 1948
Polyconic projection, 1927 North American datum
10,000-foot grids based on Maryland coordinate system
and West Virginia coordinate system, north zone
Contours in strip mine areas compiled from 1946 photography
1000-meter Universal Transverse Mercator grid ticks,
zone 17, shown in blue



USGS
Historical File
Topographic Division



ROAD CLASSIFICATION
Heavy-duty ——— Light-duty ———
Medium-duty ——— Unimproved dirt ———
U. S. Route ——— State Route ———

TABLE ROCK, MD.-W. VA.
SW/4 OAKLAND 15' QUADRANGLE
N3915-W7922.5/7.5

1948
AMS 5162 IV SW—SERIES V833

THIS MAP COMPLIES WITH NATIONAL MAP ACCURACY STANDARDS
FOR SALE BY U. S. GEOLOGICAL SURVEY, WASHINGTON, D. C. 20242
A FOLDER DESCRIBING TOPOGRAPHIC MAPS AND SYMBOLS IS AVAILABLE ON REQUEST

3295
JUN 8 1968