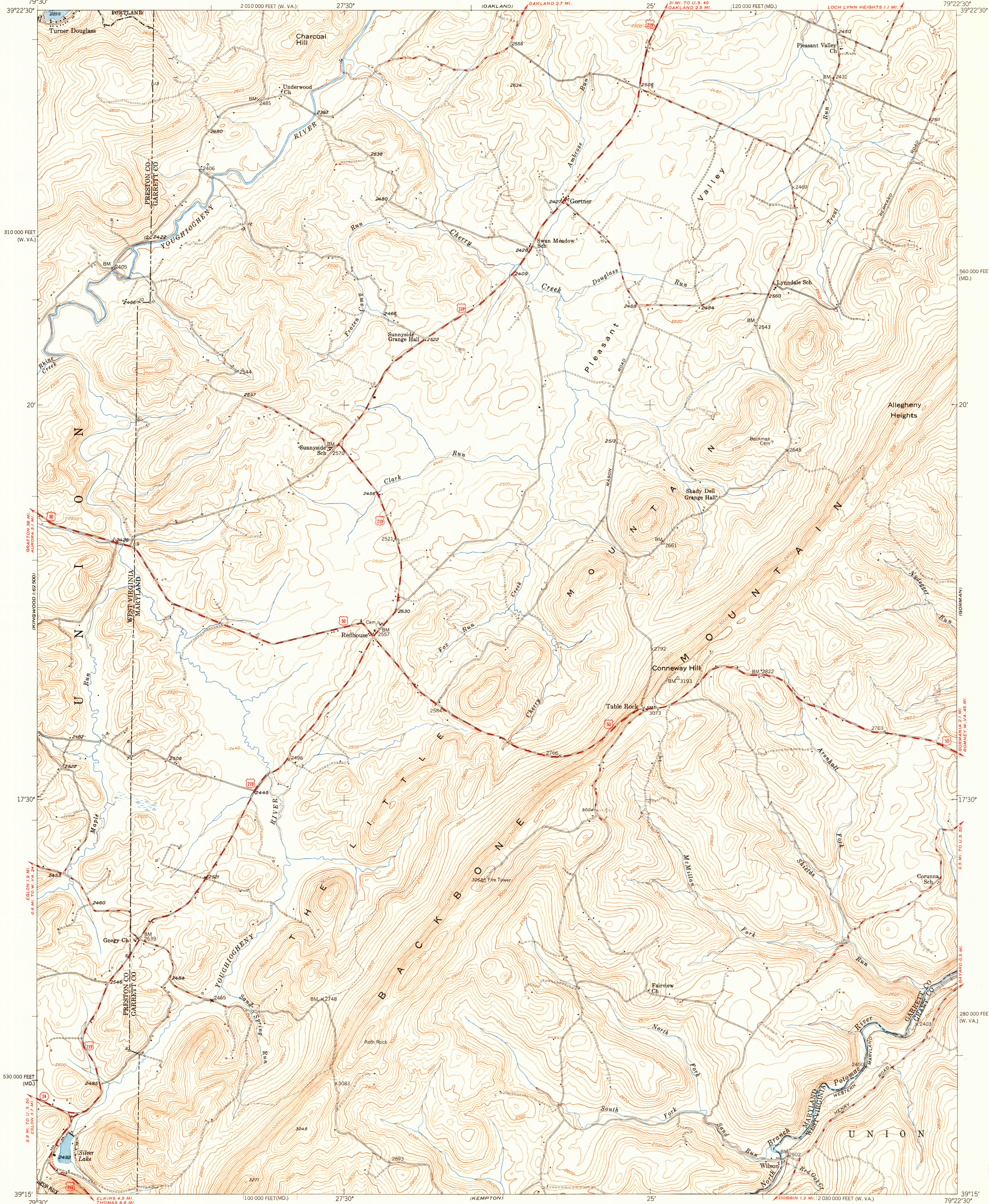


UNITED STATES
DEPARTMENT OF THE INTERIOR
GEOLOGICAL SURVEY

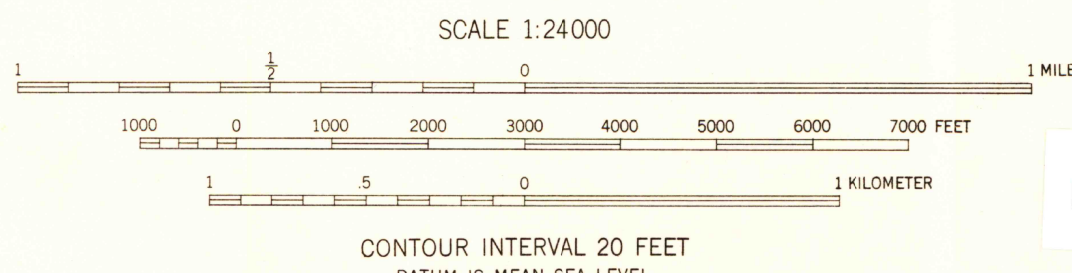
STATE OF MARYLAND
DEPARTMENT OF GEOLOGY, MINES, AND WATER RESOURCES
JOSEPH T. SINGEWALD, JR., DIRECTOR

TABLE ROCK QUADRANGLE
MARYLAND-WEST VIRGINIA
7.5 MINUTE SERIES (TOPOGRAPHIC)
SW/4 OAKLAND 15' QUADRANGLE



Mapped, edited, and published by the Geological Survey
Control by USGS and USC&GS
Topography from aerial photographs by multiplex methods
Aerial photographs taken 1946. Field check 1948
Polyconic projection. 1927 North American datum
10,000-foot grids based on Maryland coordinate system
and West Virginia coordinate system, north zone
Contours in strip mine areas compiled from 1946 photography

TRUE NORTH
MAGNETIC NORTH
APPROXIMATE MEAN
DECLINATION, 1948



ROAD CLASSIFICATION
HARD SURFACE ALL WEATHER ROADS DRY WEATHER ROADS
Heavy-duty 4 LANE 16 LANE Improved dirt
Medium-duty 4 LANE 16 LANE Unimproved dirt
Loose-surface, graded, or narrow hard-surface
U. S. Route State Route

THIS MAP COMPLIES WITH NATIONAL MAP ACCURACY STANDARDS
FOR SALE BY U. S. GEOLOGICAL SURVEY, WASHINGTON 25, D. C.

TABLE ROCK, MD.-W. VA.
SW/4 OAKLAND 15' QUADRANGLE
N3915-W7922.5/7.5

EDITION OF 1949