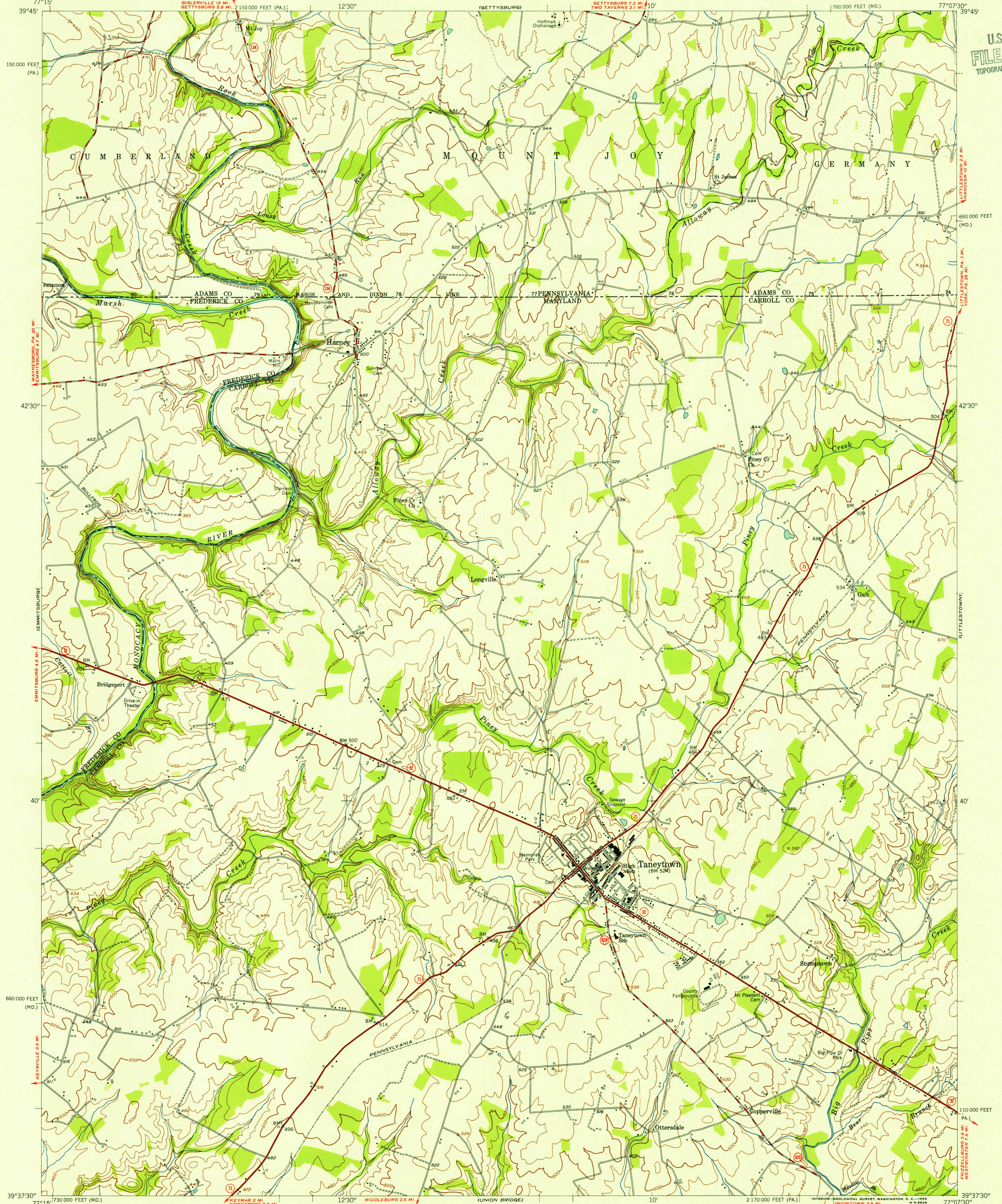


UNITED STATES  
DEPARTMENT OF THE INTERIOR  
GEOLOGICAL SURVEY

UNITED STATES  
DEPARTMENT OF THE ARMY  
CORPS OF ENGINEERS

TANEYTOWN QUADRANGLE  
MARYLAND—PENNSYLVANIA  
7.5 MINUTE SERIES (TOPOGRAPHIC)  
NW/4 TANEYTOWN 15' QUADRANGLE

U.S.G.S.  
FILE COPY  
TOPOGRAPHIC DIVISION

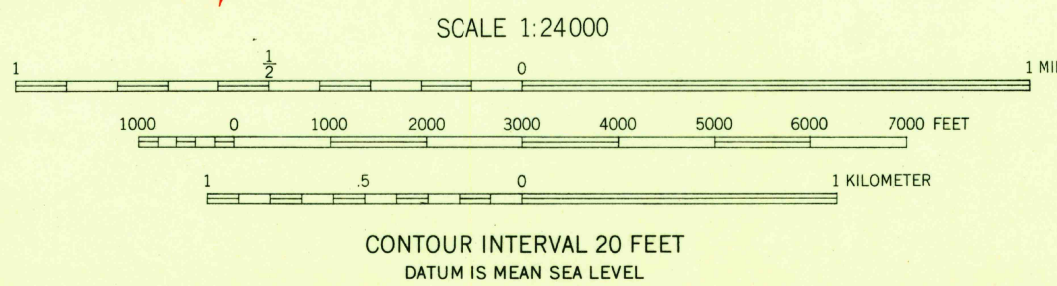


Mapped by the Army Map Service  
Edited and published by the Geological Survey  
Control by USGS and USC&GS

Topography from aerial photographs by stereophotogrammetric methods. Aerial photographs taken 1942  
Culture revised by the Geological Survey 1953

Polyconic projection. 1927 North American datum  
10,000-foot grid based on Maryland coordinate system  
and Pennsylvania coordinate system, south zone

TRUE NORTH  
MAGNETIC NORTH  
APPROXIMATE MEAN  
DECLINATION, 1953



USGS  
Historical File  
Topographic Division



ROAD CLASSIFICATION  
Heavy-duty ——— 4 LANE 16 LANE Light-duty ———  
Medium-duty ——— 4 LANE 16 LANE Unimproved dirt ———  
U. S. Route ——— State Route ———

TANEYTOWN, MD.—PA.  
NW/4 TANEYTOWN 15' QUADRANGLE  
N3937.5—W7707.5/7.5

1953

U.S.G.S.  
FILE COPY  
TOPOGRAPHIC DIVISION

FEB 1 1955

THIS MAP COMPLIES WITH NATIONAL MAP ACCURACY STANDARDS  
FOR SALE BY U. S. GEOLOGICAL SURVEY, WASHINGTON 25, D. C.  
A FOLDER DESCRIBING TOPOGRAPHIC MAPS AND SYMBOLS IS AVAILABLE ON REQUEST