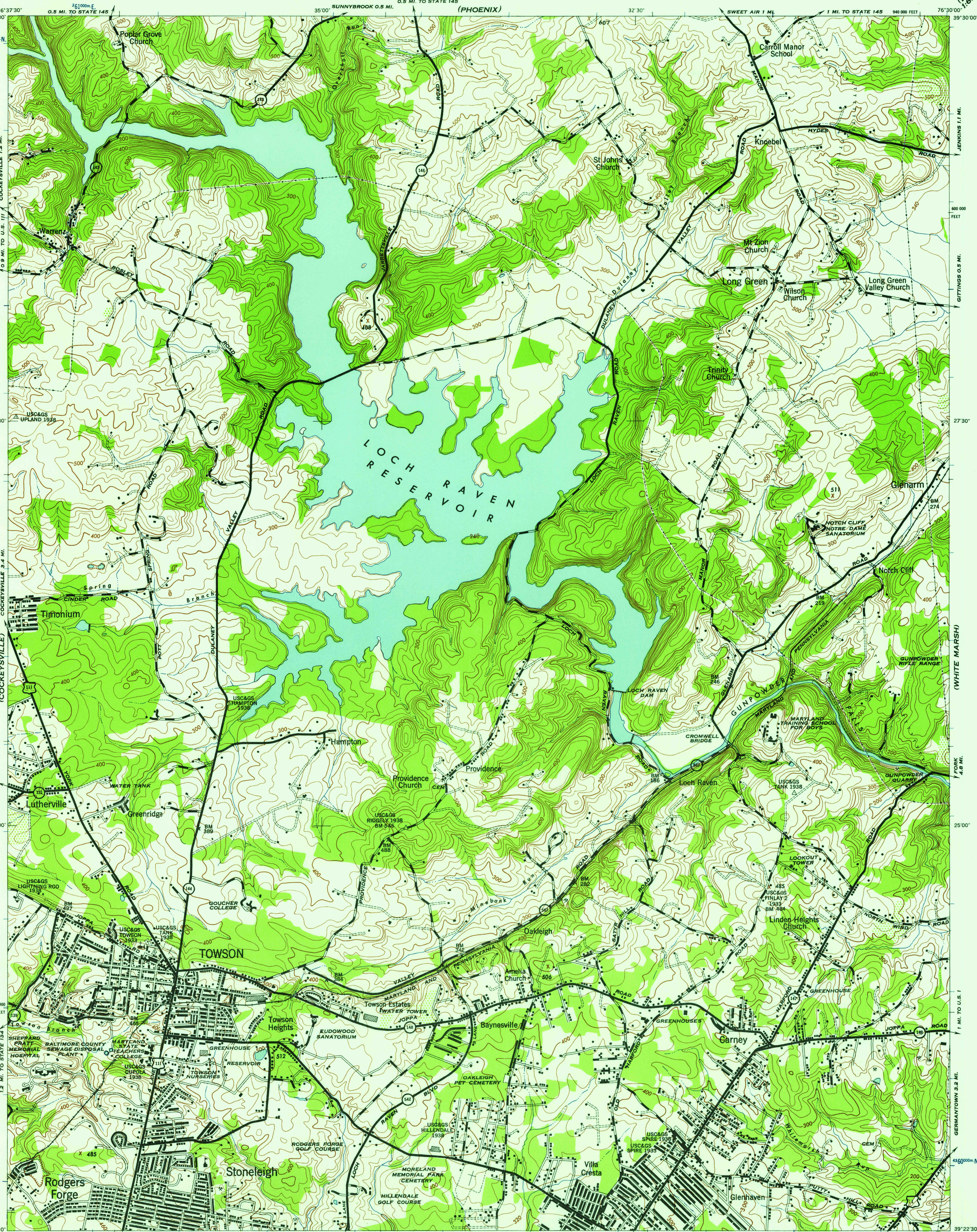


MARYLAND
BALTIMORE COUNTY

WAR DEPARTMENT
CORPS OF ENGINEERS, U. S. ARMY

TOWSON QUADRANGLE
7.5 MINUTE SERIES



Prepared by U. S. Department of Agriculture, Soil Conservation Service,
under the direction of the Chief of Engineers, U. S. Army, 1944.
Horizontal and vertical control by U. S. C. & G. S., U. S. G. S., U. S. E. D., and S. C. S., 1944.
Topography by S. C. S., 1944. Aerial photography by S. C. S., 1943.
Polyconic projection, North American datum, 1927.
This map complies with the National standard map accuracy requirements.

ROAD CLASSIFICATION 1943
Dependable hard-surface, heavy-duty road
Secondary, hard-surface, all-weather road
Loose-surface gradit, dry-weather road
Dirt road
U. S. Route
State Route
More than two lanes indicated by note along road with tick at point of change

Scale 1:24,000
CONTOUR INTERVAL 20 FEET
DATUM IS MEAN SEA LEVEL
1000-FOOT GRID TICKS, MARYLAND PLANE COORDINATE SYSTEM, EAST ZONE, SHOWN IN BLACK
1000-METER GRID TICKS, UNIVERSAL TRANSVERSE MERCATOR SYSTEM, ZONE 18, SHOWN IN BLUE
REPRINTED FROM MILITARY EDITION FOR CIVIL USE
FOR SALE BY U. S. GEOLOGICAL SURVEY, FEDERAL CENTER, WASHINGTON 25, D. C.
A FOLDER DESCRIBING TOPOGRAPHIC MAPS AND SYMBOLS IS AVAILABLE ON REQUEST

USGS
Historical File
Topographic Division

U.S.G.S.
FILE COPY
TOPOGRAPHIC DIVISION

TOWSON, MD.
N3922.5-W7630/7.5

JUL 17 1957