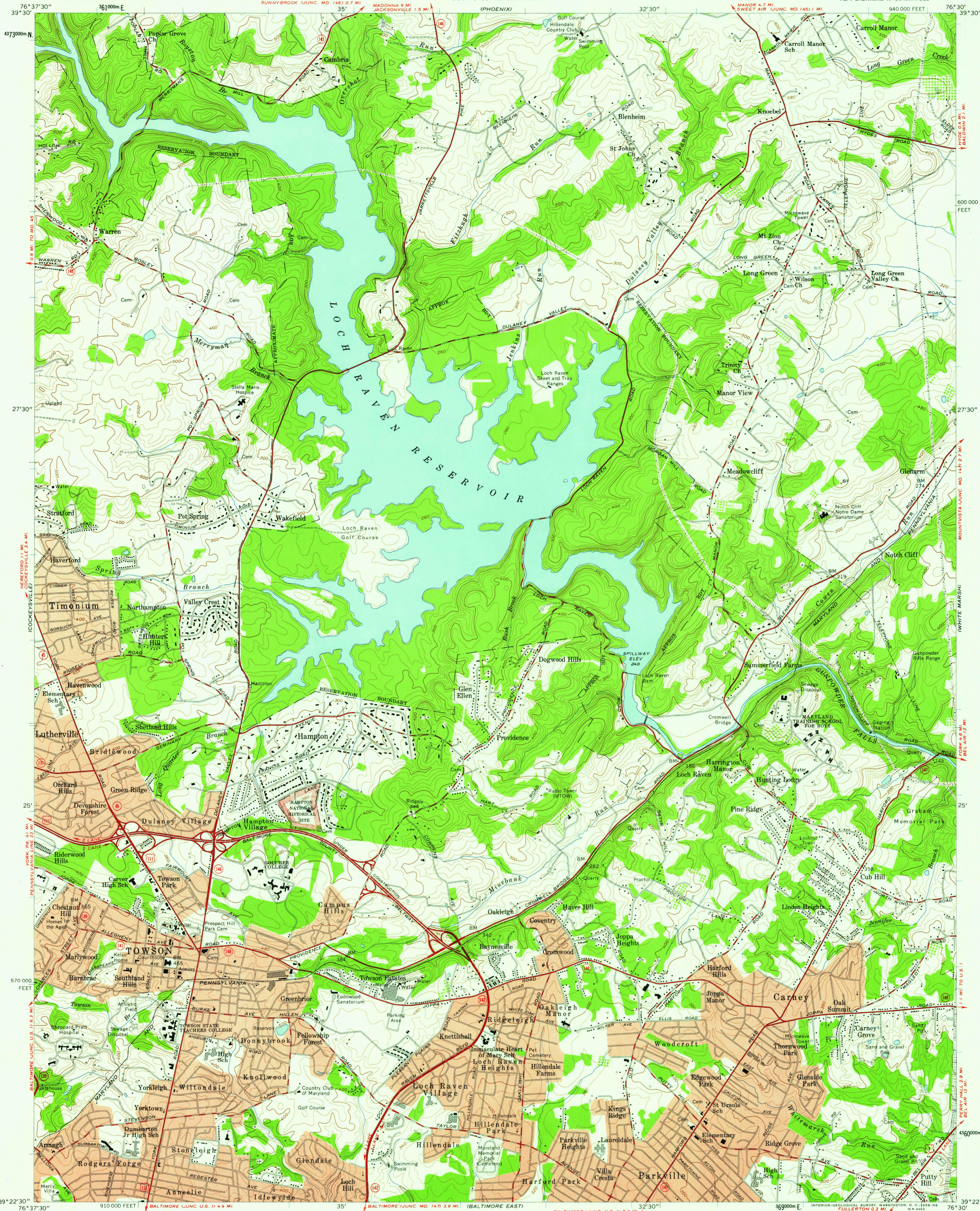


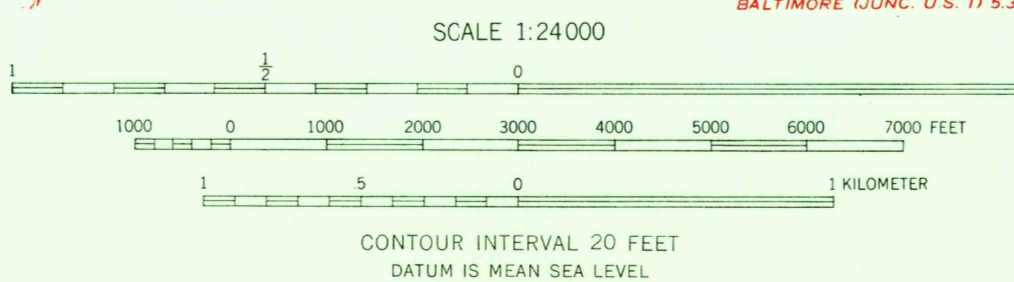
UNITED STATES
DEPARTMENT OF THE INTERIOR
GEOLOGICAL SURVEY

UNITED STATES
DEPARTMENT OF THE ARMY
CORPS OF ENGINEERS

TOWSON QUADRANGLE
MARYLAND-BALTIMORE CO.
7.5 MINUTE SERIES (TOPOGRAPHIC)



Map by the Army Map Service
Edited and published by the Geological Survey
Control by USGS, USC&GS, USCE, and Maryland
Bureau of Control Surveys and Maps
Culture and drainage in part compiled from aerial photographs
taken 1943. Topography by planetable surveys 1944
Culture revised by the Geological Survey 1957
Polyconic projection. 1927 North American datum
10,000-foot grid based on Maryland coordinate system
1000-meter Universal Transverse Mercator grid ticks,
zone 18, shown in blue
Red tint indicates areas in which only
landmark buildings are shown



USGS
Historical File
Topographic Division

ROAD CLASSIFICATION
Heavy-duty ——— Light-duty ———
Medium-duty ——— Unimproved dirt ———
U.S. Route ——— State Route ———

U.S.G.S. TOWSON, MD.
FILE COPY
TOPOGRAPHIC DIVISION
1957

THIS MAP COMPLIES WITH NATIONAL MAP ACCURACY STANDARDS
FOR SALE BY U. S. GEOLOGICAL SURVEY, WASHINGTON 25, D. C.
A FOLDER DESCRIBING TOPOGRAPHIC MAPS AND SYMBOLS IS AVAILABLE ON REQUEST

JAN - 2 1959