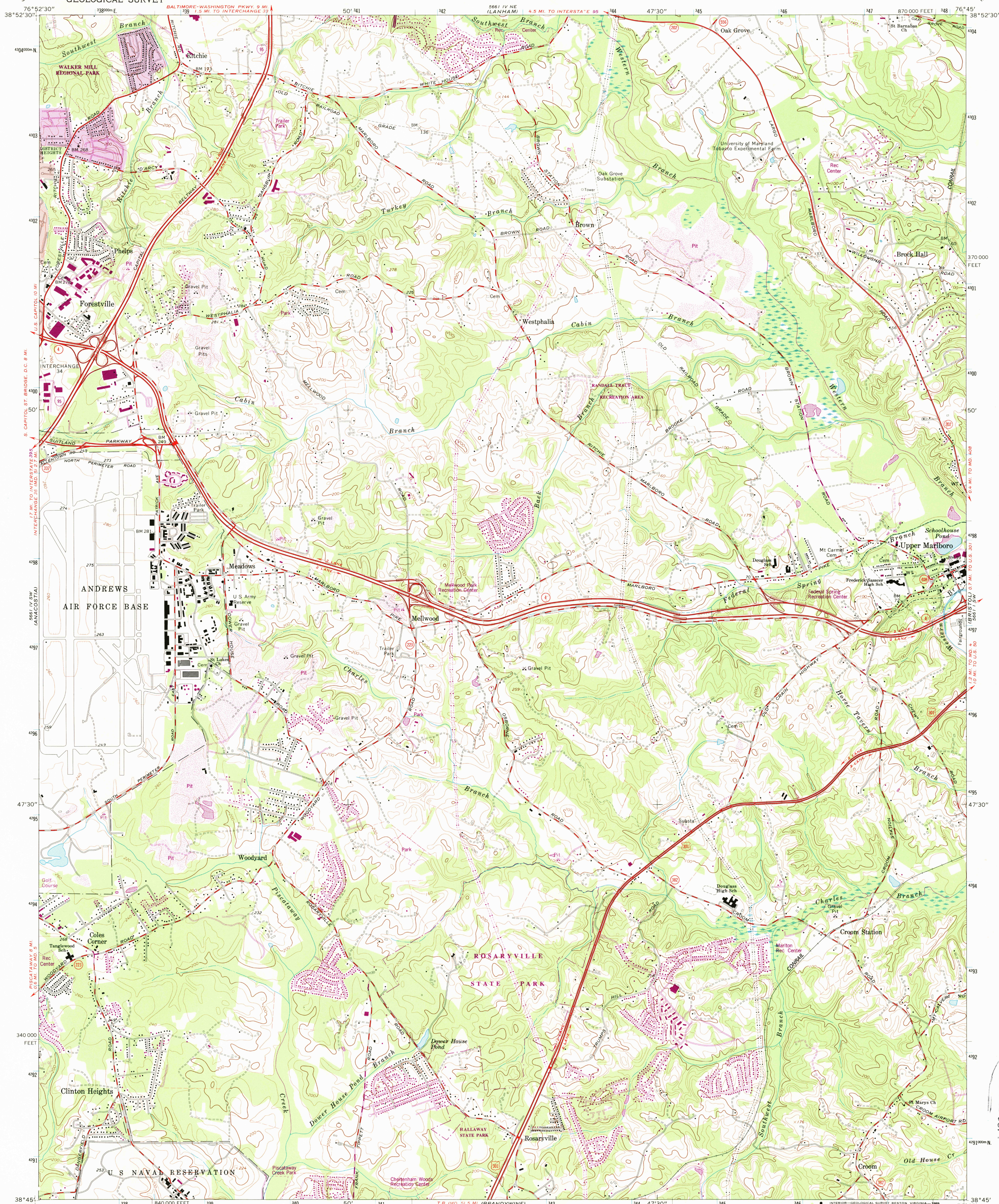


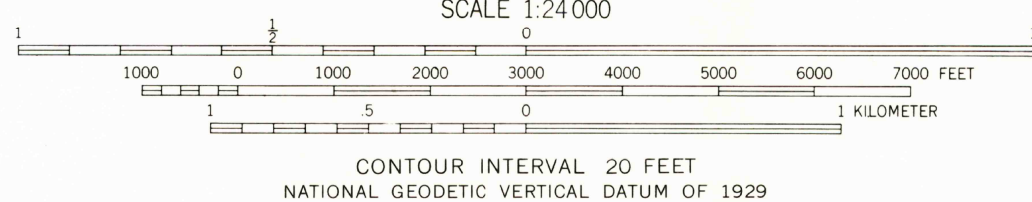
UNITED STATES  
DEPARTMENT OF THE INTERIOR  
GEOLOGICAL SURVEY

UPPER MARLBORO QUADRANGLE  
MARYLAND-PRINCE GEORGES CO.  
7.5 MINUTE SERIES (TOPOGRAPHIC)



Mapped by the Army Map Service  
Edited and published by the Geological Survey  
Control by USGS, USCG&S, and WSSC  
Planimetry by photogrammetric methods from aerial photographs  
taken 1937, 1938, and 1943. Topography by planetable surveys 1944  
Revised by the Geological Survey 1965  
Polyconic projection. 1927 North American datum  
10,000-foot grid based on Maryland coordinate system  
1000-meter Universal Transverse Mercator grid ticks,  
zone 18, shown in blue  
Fine red dashed lines indicate selected fence and field lines where  
generally visible on aerial photographs. This information is unchecked  
Red tint indicates areas in which only landmark buildings are shown  
There may be private inholdings within the boundaries of  
the National or State reservations shown on this map

UTM GRID AND 1978 MAGNETIC NORTH  
DECLINATION AT CENTER OF SHEET  
To place on the predicted North American Datum 1983,  
move the projection lines 8 meters south and  
27 meters west as shown by dashed corner ticks



ROAD CLASSIFICATION  
Heavy-duty ——— Light-duty ———  
Medium-duty ——— Unimproved dirt ———  
Interstate Route ——— U.S. Route ——— State Route ———

UPPER MARLBORO, MD.

38076-G7-TF-024

1965  
PHOTOREVISED 1978  
DMA 5661 IV SE—SERIES V833

THIS MAP COMPLIES WITH NATIONAL MAP ACCURACY STANDARDS  
FOR SALE BY U.S. GEOLOGICAL SURVEY  
DENVER, COLORADO 80225, OR RESTON, VIRGINIA 22092  
A FOLDER DESCRIBING TOPOGRAPHIC MAPS AND SYMBOLS IS AVAILABLE ON REQUEST

Revisions shown in purple compiled by the Geological  
Survey from aerial photographs taken 1977 and other source  
data. This information not field checked. Map edited 1978  
Purple tint indicates extension of urban areas

REC'D FILE COPY

MAR 23 1969

USGS MND HISTORICAL MAP