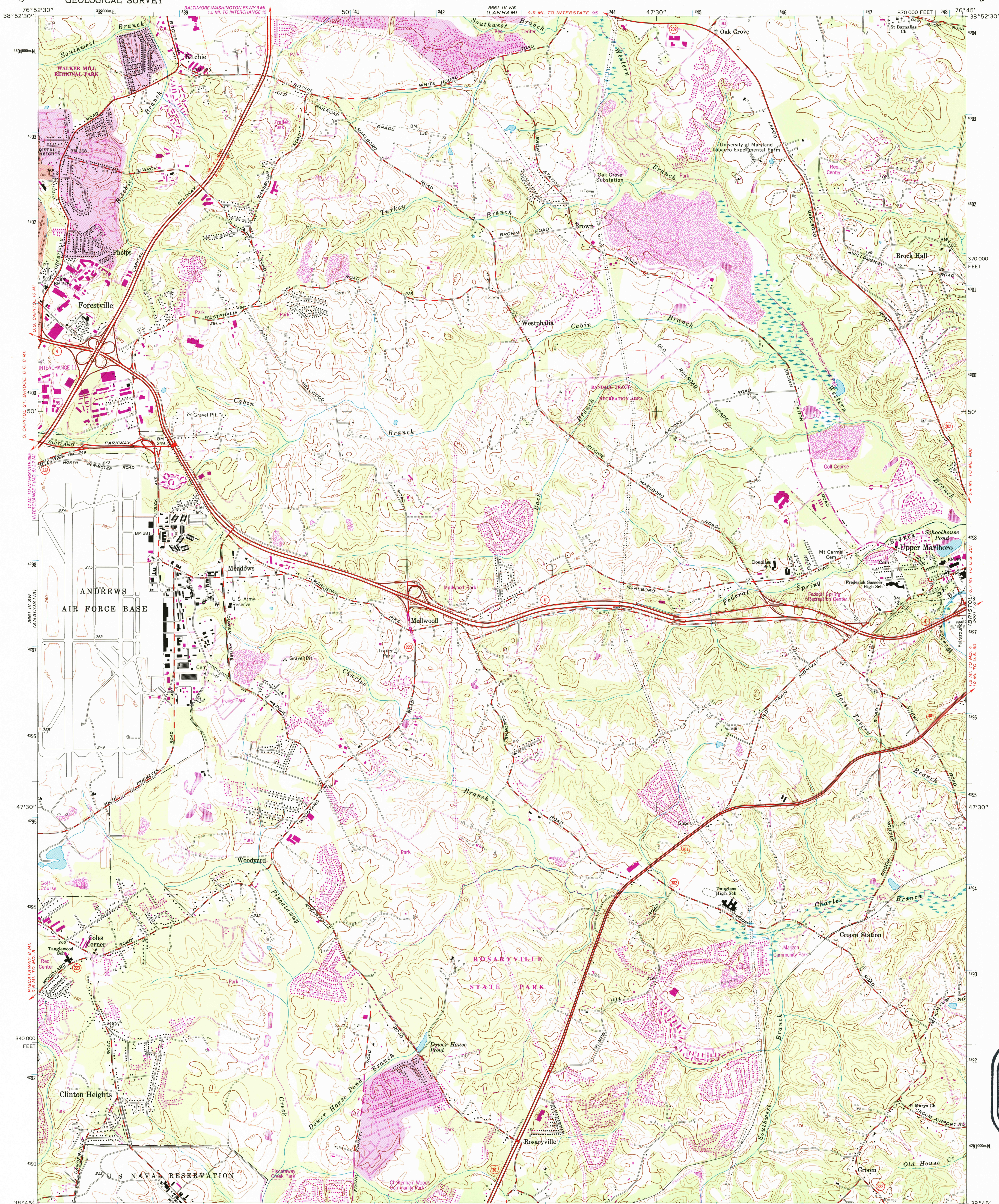
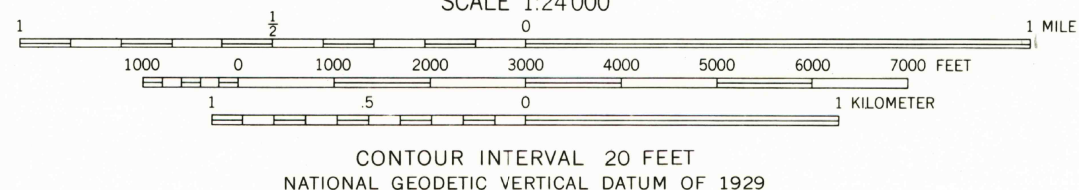
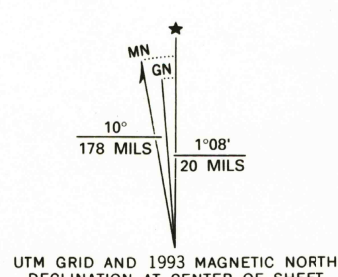


UNITED STATES  
DEPARTMENT OF THE INTERIOR  
GEOLOGICAL SURVEY

UPPER MARLBORO QUADRANGLE  
MARYLAND-PRINCE GEORGES CO.  
7.5 MINUTE SERIES (TOPOGRAPHIC)



Mapped by the Army Map Service  
Revised by the United States Geological Survey  
Control by USGS, NOS/NOAA, and WSSC  
Planimetry by photogrammetric methods from aerial photographs  
taken 1937-38 and 1943. Topography by planetable surveys 1944  
Revised by the U.S. Geological Survey 1965  
Projection and 10,000-foot grid ticks: Maryland coordinate  
system, (Lambert conformal conic)  
1000-meter Universal Transverse Mercator grid ticks, zone 18, shown in blue  
1927 North American Datum (NAD 27)  
North American Datum of 1983 (NAD 83) is shown by dashed corner ticks  
The values of the shift between NAD 27 and NAD 83 for 7.5-minute  
intersections are given in USGS Bulletin 1875  
There may be private inholdings within the boundaries of  
the National or State reservations shown on this map  
Red tint indicates areas in which only landmark buildings are shown  
Fine red dashed lines indicate selected fence and field lines where  
generally visible on aerial photographs. This information is unchecked



COMPLIES WITH U.S. GEOLOGICAL SURVEY STANDARDS FOR SPATIAL ACCURACY - CLASS 2  
FOR SALE BY U.S. GEOLOGICAL SURVEY  
DENVER, COLORADO 80225, OR RESTON, VIRGINIA 22092  
A FOLDER DESCRIBING TOPOGRAPHIC MAPS AND SYMBOLS IS AVAILABLE ON REQUEST



ROAD CLASSIFICATION  
Primary highway, hard surface ————— Light-duty road, hard or improved surface  
Secondary highway, hard surface ————— Unimproved road  
Interstate Route ——— U.S. Route ——— State Route

UPPER MARLBORO, MD.

38076-G7-TF-024

1965  
REVISED 1993  
DMA 5661 IV SE-SERIES V833

Revisions shown in purple compiled by the U.S. Geological Survey  
from aerial photographs taken 1988 and other sources  
This information is not field checked. Map edited 1993  
Information shown in purple may not meet USGS content  
standards and may conflict with previously mapped contours  
Purple tint indicates extension of urban areas

USGS AND HISTORICAL  
MAP ARCHIVES  
AUG 9 1994  
REC'D FILE COPY