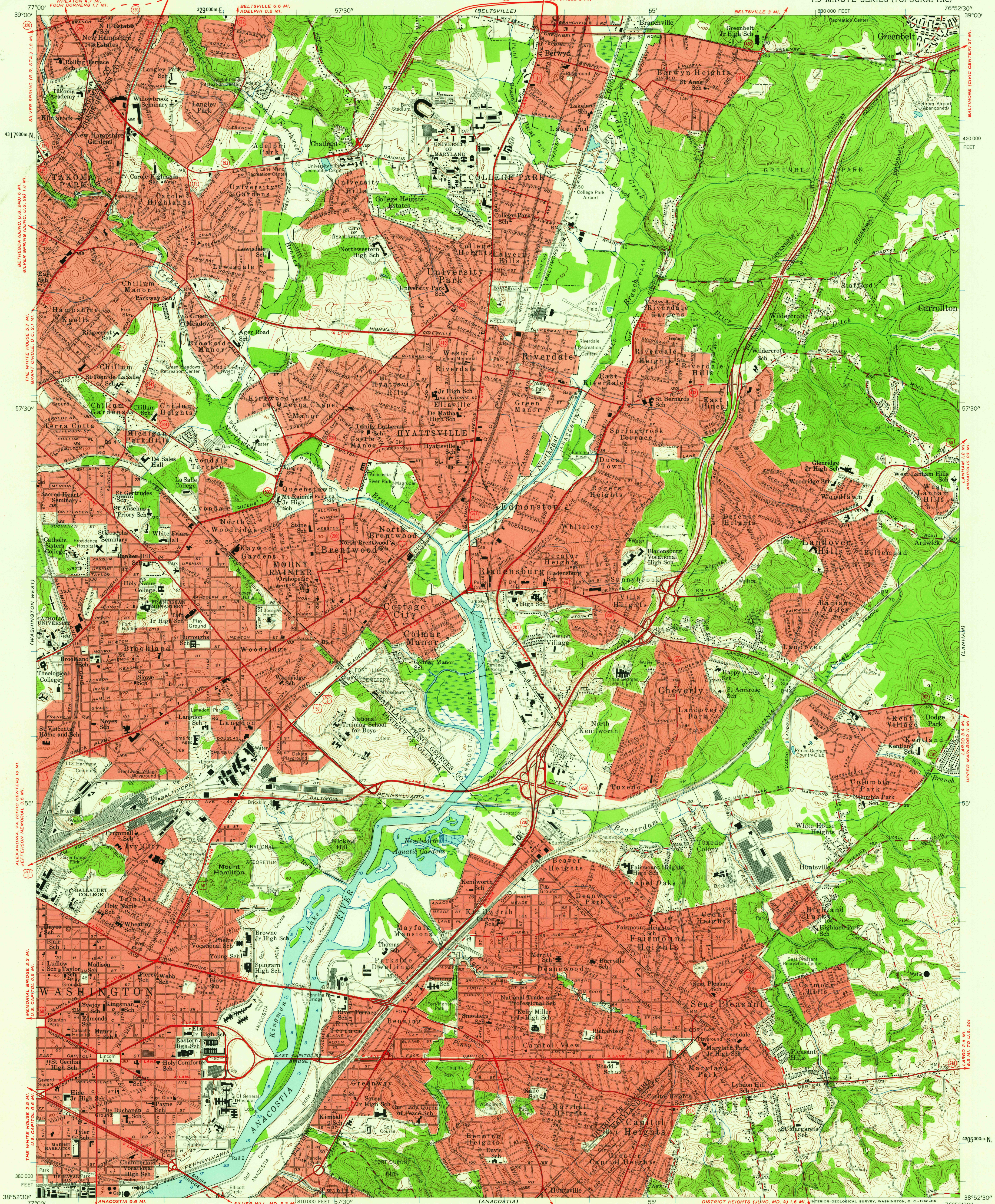


UNITED STATES
DEPARTMENT OF THE INTERIOR
GEOLOGICAL SURVEY

WASHINGTON EAST QUADRANGLE
MARYLAND—DISTRICT OF COLUMBIA
7.5 MINUTE SERIES (TOPOGRAPHIC)



Maped, edited, and published by the Geological Survey
Control by USGS, USC&GS, USCE, NCPS, and WSSC
Topography from aerial photographs by Wild A-6
Aerial photographs taken 1955. Field check 1957
Hydrography compiled from USC&GS chart 560 (1955)
Polyconic projection. 1927 North American datum
10,000-foot grids based on Maryland coordinate system,
1000-meter Universal Transverse Mercator grid ticks,
zone 18, shown in blue
Fine red dashed lines indicate selected fence and field lines
visible on aerial photographs. This information is unchecked
Red tint indicates areas in which only landmark
buildings are shown
Unchecked elevations are shown in brown

SCALE 1:24,000
CONTOUR INTERVAL 10 FEET
DATUM IS MEAN SEA LEVEL
DEPTH CURVES AND SOUNDINGS IN FEET—DATUM IS MEAN LOW WATER
SHORELINE SHOWN REPRESENTS THE APPROXIMATE LINE OF MEAN HIGH WATER
THE MEAN RANGE OF TIDE IS APPROXIMATELY 2.9 FEET
THIS MAP COMPLIES WITH NATIONAL MAP ACCURACY STANDARDS
FOR SALE BY U. S. GEOLOGICAL SURVEY, WASHINGTON 25, D. C.
A FOLDER DESCRIBING TOPOGRAPHIC MAPS AND SYMBOLS IS AVAILABLE ON REQUEST

USGS
Historical File
Topographic Division

ROAD CLASSIFICATION
Heavy-duty ——— Light-duty ———
Medium-duty ——— Unimproved dirt - - - - -
U. S. Route ——— State Route ———

WASHINGTON EAST, MD.—D. C.
N 3852.5—W 7652.5/7.5

1957
TOPOGRAPHIC DIVISION

JAN 10 1962

5645